

Schools and students: 2020 statistical bulletin

Centre for Education Statistics and Evaluation



2020 statistical bulletin summary

NSW government

Full-time equivalent (FTE) enrolments

Primary enrolments	492,280.0
Secondary enrolments	312,016.8
SSP enrolments	5,780.0
Total enrolments	810,076.8

Aboriginal and Torres Strait Islander students

Total Aboriginal & Torres Strait Islander enrolments	65,960.4
Percent Aboriginal & Torres Strait Islander enrolments	8.2%

Part-time students

Number of part-time students	1,756.0
FTE enrolments	1,127.8

Preschool students

Number of preschool students	4,271
FTE enrolments	2,257.7

Students with language background other than English (LBOTE)

LBOTE enrolments	302,099
LBOTE enrolments as per cent of total enrolments	36.9%

Average primary class size

Kindergarten to Year 6	23.8
------------------------	------

HSC Year 12

HSC awards	36,910
------------	--------

NSW government schools

Primary and infants schools	1,607
Central/community schools	68
Secondary schools	401
Schools for specific purposes (SSPs)	116
Environmental education centres (EECs)	23
Total government schools	2,215
Preschools attached to primary/infants schools	100
Separate preschools	1
Total preschools	101

NSW non-government

Full-time equivalent (FTE) enrolments

Primary enrolments	211,195.1
Secondary enrolments	219,960.1
Total enrolments	431,155.2

NSW non-government schools

Primary schools	494
Secondary schools	140
Primary/secondary schools	254
Special schools	62
Total non-government schools	950

Data sources

The 2020 statistical bulletin reports NSW government schools data from:

- the census of students undertaken on Friday, 7 August 2020
- the census of students of language background other than English, undertaken on Friday 6 March 2020
- the K-6 class size audit undertaken on Friday, 13 March 2020

- the K-6 languages programs: includes languages programs (in school hours) collection undertaken in May 2020
- the Years 7-9 language participation collection undertaken in August and September 2020
- Enrolment Registration Number (ERN) extract for the Family Occupation and Education Index (FOEI) in April 2020.

The bulletin also includes non-government schools data which were collected by the Australian Government Department of Education and Training on Friday, 7 August 2020.

Further reference

Additional information about schools and students in NSW is available from the Centre for Education Statistics and Evaluation's (CESE) other statistical publications.

Visit our website to download the publications: www.cese.nsw.gov.au/publications.

Additional information is also available from the NSW Education Data Hub: <https://data.cese.nsw.gov.au>.

Table of contents

List of tables

Schools

Table 1 NSW government schools by size, 2010-2020	5
Table 2 NSW government schools by type and SA4 groupings, mid-year 2020	7
Table 3 NSW government schools by FOEI bands and SA4 groupings, mid-year 2020	8
Table 4 NSW government schools by ABS remoteness and SA4 groupings, mid-year 2020	9
Table 5 List of college arrangements, mid-year 2020	10
Table 6 Secondary education schools by selective, specialist and coeducational status, mid-year 2020	11

Classes

Table 7 Average primary class sizes by year, 1997 and 2010-2020	12
---	----

Students

Table 8 Enrolments (FTE) in NSW government schools, 1970, 1980, 1990, 1996-2020	13
Table 9 Age-grade distribution of students in NSW government schools, mid-year 2020, primary students by age and year of schooling (including students in mainstream support classes)	15
Table 10 Age-grade distribution of students in NSW government schools, mid-year 2020, secondary students by age and year of schooling (including students in mainstream support classes)	16
Table 11 Age-grade distribution of students in NSW government schools, mid-year 2020, part-time secondary students by age and year of schooling	18
Table 12 Enrolments in support classes and schools for specific purposes (SSPs) by category, mid-year 2020	19
Table 13 Age-grade distribution of students in NSW government schools, mid-year 2020, students in schools for specific purposes (SSPs) by age and category	21
Table 14 Age distribution of students in NSW government preschools and early intervention programs, mid-year 2020	22
Table 15 Enrolments (FTE) in distance education by year of schooling, mid-year 2020	23

Table 16	Enrolments (FTE) of Aboriginal students by ABS Statistical Area Level 4 groupings and grade group in NSW government schools, mid-year 2020	24
Table 17	Enrolment of students of language background other than English (LBOTE) in NSW government schools, March 2020 by SA4 groupings and grade groups	25
Table 18	Enrolments (FTE) in NSW government schools by FOEI quarters and SA4 groupings, April 2020	26

Study patterns

Table 19	Primary students in NSW government schools studying a language other than English by year of schooling and language, May 2020	27
Table 20	Language participation Year 7-9 by gender and year of schooling, August 2020	29
Table 21	Board Developed Course enrolments in Year 10 subjects in NSW government schools, 2020	31
Table 22	Course enrolments in Year 11 and Year 12 subjects in NSW government schools, 2020	36

Progress measures

Table 23	Apparent retention (%) in NSW government schools, 2010-2020	42
Table 24	NSW government school HSC completions, 2016-2020	44

List of figures

Figure 1	NSW government schools, 2010-2020	6
Figure 2	Primary and secondary enrolments (FTE) in NSW government schools, 2010-2020	14
Figure 3	Enrolments (FTE) in NSW government schools by year of schooling and gender, mid-year 2020	17
Figure 4	Enrolments (FTE) in NSW government schools by age and gender, mid-year 2020	17
Figure 5	Enrolments in support classes in mainstream schools and SSPs by category, mid-year 2020	20
Figure 6	Apparent retention (%) in NSW government schools, 2010-2020	43

Schools

Table 1
NSW government schools by size, 2010-2020

Classification	2010	2011	2012	2013	2014	2015	2016	2017	2018	2019	2020
Primary and infants schools											
More than 700 enrolments	62	66	70	85	95	97	106	118	120	116	117
451 to 700 enrolments	253	259	260	263	260	263	269	267	273	281	286
301 to 450 enrolments	303	299	292	285	298	307	308	309	304	317	312
160 to 300 enrolments	381	381	380	378	361	350	335	334	336	324	322
26 to 159 enrolments	453	441	453	424	412	411	407	397	388	377	370
Less than 26 enrolments	177	184	167	182	191	178	183	182	183	190	200
Total	1,629	1,630	1,622	1,617	1,617	1,606	1,608	1,606	1,604	1,605	1,607
Central and community schools											
More than 900 enrolments	4	3	3	3	3	3	3	2	2	2	3
701 to 900 enrolments		1	1	1	1	2	2	3	3	3	2
451 to 700 enrolments	4	4	4	5	4	3	3	2	3	3	3
301 to 450 enrolments	6	8	7	6	8	7	8	8	7	9	8
160 to 300 enrolments	19	17	20	20	20	20	17	18	20	17	20
Less than 160 enrolments	34	34	32	32	31	31	33	32	31	34	32
Total	67	67	67	67	67	66	66	66	66	68	68
Secondary schools											
More than 900 enrolments	129	129	130	123	127	127	124	125	126	129	136
900 or less enrolments	268	268	267	274	270	272	275	274	273	268	263
Other	1	1	1	1	1	2	2	2	2	2	2
Total	398	398	398	398	398	401	401	401	401	399	401
Other schools											
Schools for specific purposes	113	113	113	113	114	113	112	113	113	115	116
Environmental education centres	23	23	23	23	23	23	23	23	23	23	23
Total schools	2,230	2,231	2,223	2,218	2,219	2,209	2,210	2,209	2,207	2,210	2,215

Notes:

- This table shows schools by size (number of students) rather than 'classification' as in previous publications, as school classification is no longer applicable.
- NSW School of Languages and Aurora College are included in 'Other' category under Secondary schools. These schools do not have full-time enrolments.
- Refer to explanatory notes 1, 2 and 3.

Figure 1

NSW government schools, 2010-2020

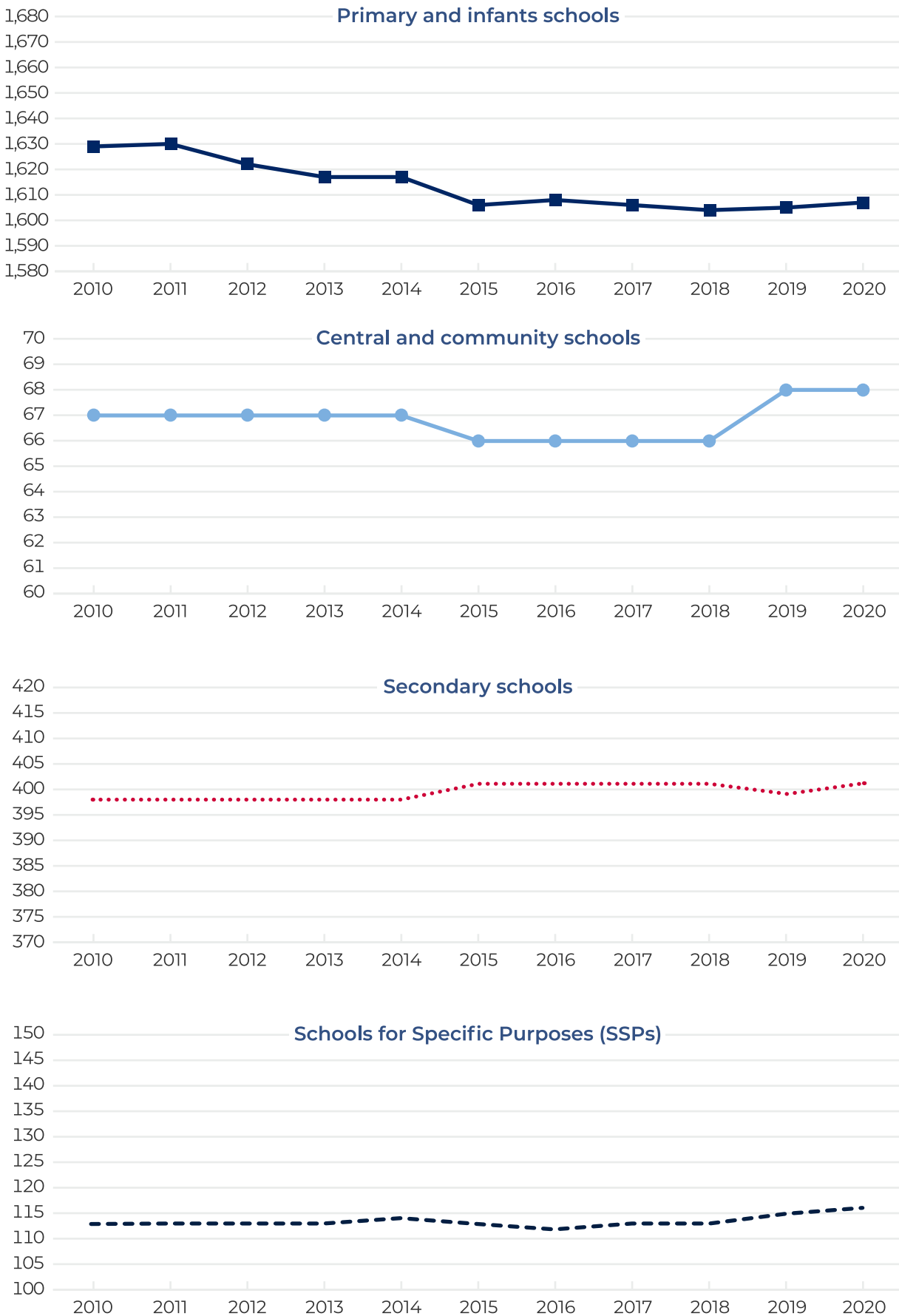


Table 2

NSW government schools by type and SA4 groupings, mid-year 2020

SA4 Groupings	Primary/ infants	Central/ community	Secondary	SSPs	EECs	Total
Sydney-North	100	1	34	12	2	149
Sydney-Inner	90	1	29	10	1	131
Sydney-South	117	1	38	15	2	173
Sydney-South West	115		39	13	3	170
Sydney-West	115		36	17		168
Sydney-North West	111		28	5	3	147
Sydney total	648	3	204	72	11	938
North East NSW	214	8	39	4	2	267
North West NSW	215	28	43	8	3	297
South West NSW	204	22	40	11	2	279
South East NSW	184	4	39	8	2	237
Central Coast, Newcastle	142	2	36	13	3	196
Regional total	959	65	197	44	12	1,277
NSW	1,607	68	401	116	23	2,215

Notes:

- Alexandria Park Community School, Batlow Technology School, Dubbo School of Distance Education, Evans River Community School, Hunter School of Performing Arts, Lucas Heights Community School and Wadalba Community School are included with central/ community schools.
- Refer to explanatory notes 1, 2, 3 and 16.

Table 3

NSW government schools by FOEI bands and SA4 groupings, mid-year 2020

SA4 Groupings	Less than 50	50 to 90	90 to 110	110 to 150	150 or more	N/A	Total	≥ 110 (%)
Sydney-North	125	14	4	0	2	4	149	1.3%
Sydney-Inner	90	28	7	3	2	3	133	3.8%
Sydney-South	39	65	28	24	15	2	173	22.5%
Sydney-South West	3	21	33	60	50	3	170	64.7%
Sydney-West	38	33	23	36	37	1	168	43.5%
Sydney-North West	29	47	22	37	9	3	147	31.3%
Sydney total	324	208	117	160	115	16	940	29.3%
North East NSW	13	50	42	122	38	2	267	59.9%
North West NSW	5	33	37	130	89	3	297	73.7%
South West NSW	3	34	58	125	57	2	279	65.2%
South East NSW	24	54	55	80	22	2	237	43.0%
Central Coast, Newcastle	24	54	24	77	14	3	196	46.4%
Regional total	69	225	216	534	220	12	1,276	59.1%
NSW	393	433	333	694	335	28	2,216	46.4%

Notes:

The list of schools with FOEI values and quarters:

- Includes:
 - All hospital schools (all assigned a notional FOEI of 100)
 - Stewart House School (assigned a notional FOEI of 150)
 - Royal Far West School (assigned a notional FOEI of 150)
- Excludes:
 - Palm Avenue School
 - NSW School of Languages
 - All Environmental Education Centres
 - Aurora College
- Refer to explanatory notes 15 and 16.
- Norfolk Island Central School is included in the North West NSW SA4 Grouping.

Table 4

NSW government schools by ABS remoteness and SA4 groupings, mid-year 2020

SA4 Groupings	Major cities	Inner regional	Outer regional	Remote	Very remote	Total
Sydney-North	147	2				149
Sydney-Inner	131					131
Sydney-South	170	3				173
Sydney-South West	157	13				170
Sydney-West	168					168
Sydney-North West	122	24	1			147
Sydney total	895	42	1	0	0	938
North East NSW	21	194	51		1	267
North West NSW	32	94	131	29	11	297
South West NSW		140	129	10		279
South East NSW	90	108	39			237
Central Coast, Newcastle	190	6				196
Regional total	333	542	350	39	12	1,276
NSW	1,228	584	351	39	13	2,215

Notes:

- From 2016 onwards, instead of the Ministerial Council for Education, Early Childhood Development and Youth Affairs (MCEEDYA) remoteness categories, remoteness geographical data will be reported by the ABS remoteness structure. This is in line with national reporting.
- Refer to explanatory notes 2 and 16.

Table 5

List of college arrangements, mid-year 2020

College	Senior campus	Other campuses
Brisbane Water Secondary College	Woy Woy Campus	Umina Campus
Callaghan College	Jesmond Senior Campus	Wallsend Campus Waratah Campus
Chifley College	Senior Campus	Bidwill Campus Dunheved Campus Mount Druitt Campus Shalvey Campus
Denison College of Secondary Education		Bathurst High Campus Kelso High Campus
Dubbo College	Senior Campus	Delroy Campus South Campus
Georges River College	Oatley Senior Campus	Hurstville Boys Campus Peakhurst Campus Penshurst Girls Campus
Great Lakes College	Senior Campus	Forster Campus Tuncurry Campus
Hastings Secondary College		Port Macquarie Campus Westport Campus
Moree Secondary College	Albert St Campus	Carol Ave Campus
Nirimba College	Wyndham College	Quakers Hill High School Riverstone High School Seven Hills High School
Northern Beaches Secondary College	Freshwater Senior Campus	Balgowlah Boys Campus Cromer Campus Mackellar Girls Campus Manly Campus
Sydney Secondary College	Blackwattle Bay Campus	Balmain Campus Leichhardt Campus
The Rivers Secondary College		Kadina High Campus Lismore High Campus Richmond River High Campus
Tuggerah Lakes Secondary College	The Entrance Campus	Berkeley Vale Campus Tumbi Umbi Campus

Notes:

- Denison College of Secondary Education, Hastings Secondary College and The Rivers Secondary College do not have senior campuses.
- Refer to explanatory note 14.

Table 6

Secondary education schools by selective, specialist and coeducational status, mid-year 2020

Selective status	Specialty name	Coeducational	Boys	Girls	Total
Fully selective	Agricultural	3	1		4
	Comprehensive	9	4	4	17
Partially selective	Comprehensive	16	2	2	20
	Junior college	2			2
	Language	2			2
	Senior college	1			1
	Other	1			1
Total selective		34	7	6	47
Non-selective	Comprehensive	326	11	15	352
	Creative arts	1			1
	Distance education	2			2
	Intensive English	1			1
	Junior college	17	1	1	19
	Language	3		1	4
	Marine technology	1			1
	Performing arts	8			8
	Rural technology	1			1
	Senior college	15			15
	Sports	7			7
	Technology	7	2	1	10
	Visual arts	1			1
Total non-selective		390	14	18	422
Total secondary schools		424	21	24	469

Notes:

- Includes secondary schools and central/community schools. The Conservatorium High School is included with performing arts schools.
- Refer to explanatory note 1.

Classes

Table 7

Average primary class sizes by year, 1997 and 2010-2020

Year	1997	2010	2011	2012	2013	2014	2015	2016	2017	2018	2019	2020
Kindergarten	24.1	19.2	19.2	19.3	19.4	19.3	19.2	19.1	19.1	19.1	18.8	18.8
Year 1	25.5	21.2	21.2	21.2	21.3	21.4	21.3	21.3	21.3	21.4	21.1	21
Year 2	26.2	22.7	22.6	22.7	22.7	22.7	22.7	22.6	22.5	22.5	22.3	22.2
Year 3	26.6	25.6	25.7	25.5	25.6	25.6	25.9	25.9	25.7	25.8	25.7	25.4
Year 4	26.8	26.2	26.1	25.9	25.9	25.9	26.2	26.2	26.1	26.1	25.9	25.6
Year 5	26.8	26.4	26.4	26.2	26.3	26.2	26.5	26.3	26.4	26.4	26.1	25.9
Year 6	26.9	26.4	26.3	26.2	26.1	26.2	26.4	26.3	26.4	26.4	26.1	25.9
Kindergarten – Year 6	26.9	24.2	24.0	24.0	24.0	24.0	24.1	24.1	24.1	24.1	23.9	23.8

Notes:

- Class size audits were not conducted in 1998, 1999, 2000 and 2001.
- The average class size for each year level is calculated from regular and multi-age classes that contain a student from that year level. This can result in a lower K-6 average class size than any individual year level.
- Students attending schools for specific purposes (SSPs), students in mainstream support classes and distance education students are excluded from average class size calculations.
- From 2017, school size is based on primary enrolment rather than school classification.
- Data from earlier years is not replaced in the Class Size factsheet. Schools change size. Historical data displays the data that was correct in that year.
- Refer to explanatory note 12.

Students

Table 8

Enrolments (FTE) in NSW government schools, 1970, 1980, 1990, 1996-2020

Year	Primary (K-6)	Secondary (7-12)	SSP	Total
1970	503,547	257,874		761,421
1980	515,769	283,352		799,121
1990	434,814	304,006	4,366	743,186
1996	450,465	306,823.3	3,749	761,037.3
1997	451,560	308,922.7	3,690	764,172.7
1998	452,568	309,133.7	3,673	765,374.7
1999	453,454	308,116.1	3,762	765,332.1
2000	454,363	303,681	3,792	761,836
2001	451,093	301,774.4	3,873	756,740.4
2002	447,897	302,988	3,915	754,800
2003	443,213	304,034	3,938	751,185
2004	438,677	302,849.6	3,981	745,507.6
2005	434,876	302,578.3	4,124	741,578.3
2006	432,660	303,622	4,133	740,415
2007	429,900	304,457.7	4,278	738,635.7
2008	428,331	303,055.7	4,392	735,778.7
2009	429,000	303,180.7	4,466	736,646.7
2010	430,177	307,291.2	4,673	742,141.2
2011	433,873	306,893.2	4,774	745,540.2
2012	438,681	304,632.1	4,921	748,234.1
2013	446,848	303,433.6	5,064	755,345.6
2014	456,151	302,339.7	5,207	763,697.7
2015	465,767	300,871.1	5,340	771,978.1
2016	475,073	300,069.9	5,457	780,599.9
2017	484,645	300,832.8	5,562	791,039.8
2018	491,043	301,315.2	5,664	798,022.2
2019	493,608	306,327.8	5,737	805,672.8
2020	492,280	312,016.8	5,780	810,076.8

Notes:

- Since 1993 some students have enrolled part-time. All enrolments are reported in full-time equivalent (FTE) units and include full-time and part-time students.
- Refer to explanatory notes 1, 2, 3, 7 and 8.

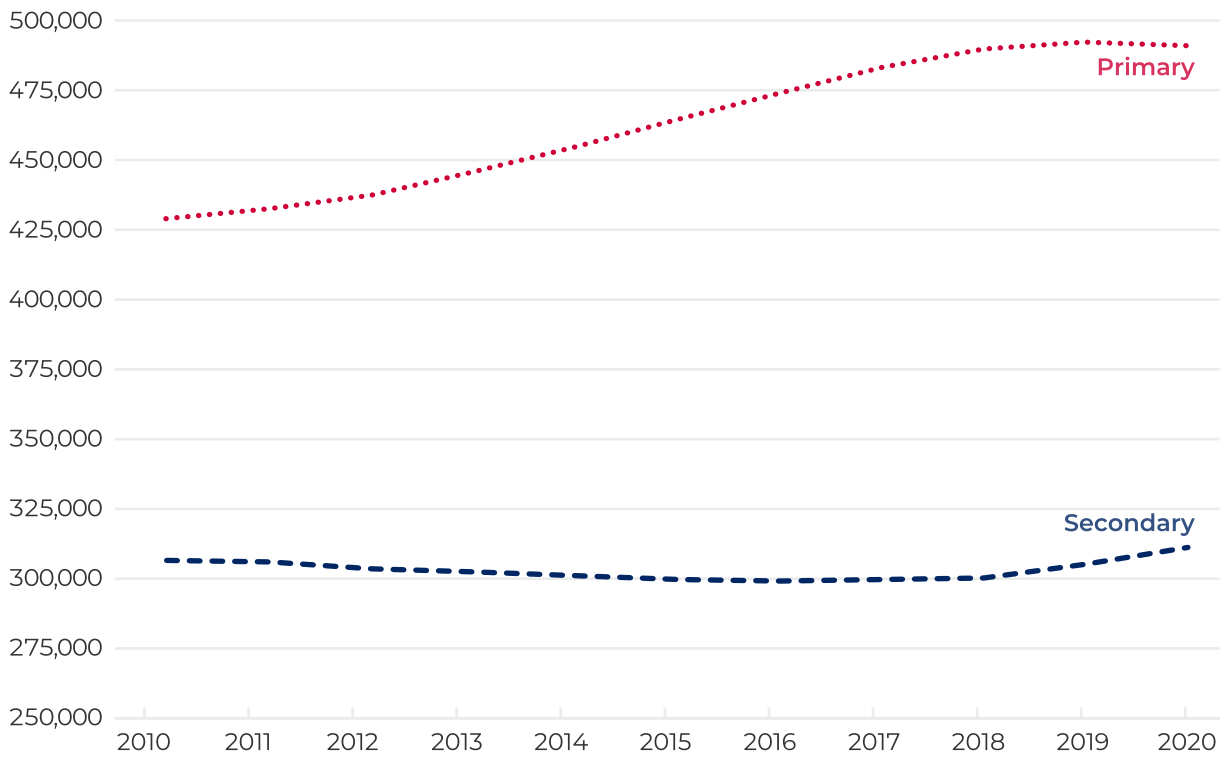
Figure 2**Primary and secondary enrolments (FTE) in NSW government schools, 2010-2020**

Table 9

Age-grade distribution of students in NSW government schools, mid-year 2020, primary students by age and year of schooling (including students in mainstream support classes)

Age Yrs:mths	Kindergarten		Year 1		Year 2		Year 3		Year 4		Year 5		Year 6		Total		Primary total
	Boys	Girls	Boys	Girls	Boys	Girls	Boys	Girls	Boys	Girls	Boys	Girls	Boys	Girls	Boys	Girls	
Under 5	518	617													518	617	1,135
5-5:11	25,386	25,654	471	603											25,857	26,257	52,114
6-6:11	10,829	7,550	25,580	26,205	436	585									36,847	34,340	71,187
7-7:11	38	18	10,705	7,427	26,373	26,826	499*	715							37,613	34,986	72,599
8-8:11			33	19*	10,751	7,382	25,960	26,495	492	652					37,237	34,547	71,784
9-9:11					29*	15	10,160	6,995	25,719	26,426	419*	708			36,326	34,145	70,471
10-10:11							32	25	10,058	6,917	25,531	26,258	461*	670	36,082	33,870	69,952
11-11:11									30	31	9,293	6,488	25,546	26,218	34,869	32,737	67,606
12-12:11											35	19	8,845	6,452	8,880	6,471	15,351
13 and over													51*	30	51	30	81
Subtotal	36,771	33,839	36,789	34,254	37,589	34,808	36,651	34,230	36,299	34,026	35,278	33,473	34,903	33,370	254,280	238,000	492,280
Total	70,610		71,043		72,397		70,881		70,325		68,751		68,273		492,280		

Notes:

- Students in distance education and Opportunity Classes (OC) are included with their appropriate grade levels.
- From 2020, students in mainstream support classes are reported by their underlying grade of enrolment. Students in schools for specific purposes (SSPs) are not included.
- In most scholastic years there are a small number of students in atypical age groups. These have been included in the nearest band. This is indicated with an asterisk. For instance, of the 19 Year 1 Girls in the 8-8:11 age bracket, up to 5 students are included from older age brackets. As a result, the sum of each row may not equal the totals reported.

Table 10

Age-grade distribution of students in NSW government schools, mid-year 2020, secondary students by age and year of schooling (including students in mainstream support classes)

Age Yrs:mts	Year 7		Year 8		Year 9		Year 10		Year 11		Year 12		Total		Secondary total
	Boys	Girls	Boys	Girls	Boys	Girls	Boys	Girls	Boys	Girls	Boys	Girls	Boys	Girls	
Under 12	440	627											445	629	1,074
12-12:11	21,972	22,131	455*	641*									22,425	22,771	45,196
13-13:11	8,111	5,494	21,623	21,828	379*	584*							30,111	27,905	58,016
14-14:11	69	34*	7,846	5,511	20,707	20,810	428*	548					29,051	26,903	55,954
15-15:11			98*	47*	7,770	5,334	19,686	19,798	381*	472*			27,932	25,649	53,581
16-16:11					205*	151*	7,641	5,407	16,470	17,789	311*	469	24,541	23,740	48,281
17-17:11							165	167	5,977	4,839	13,206	15,548	19,351	20,562	39,913
18-18:11							37	41	265	240	4,736	4,002	5,047	4,293	9,340
19-19:11							23	28	39	53	217	218	297	305	602
20-20:11							21	20	15	24	24	55	74	113	187
21 and over							58	112	74	89	35	50	210	291	501
Subtotal	30,592	28,286	30,022	28,027	29,061	26,879	28,059	26,121	23,221	23,506	18,529	20,342	159,484	153,161	312,645
Total	58,878		58,049		55,940		54,180		46,727		38,871		312,645		

Notes:

- Students in distance education and Opportunity Classes (OC) are included with their appropriate grade levels.
- From 2020, students in mainstream support classes are reported by their underlying grade of enrolment. Students in schools for specific purposes (SSPs) are not included.
- In most scholastic years there are a small number of students in atypical age groups. These have been included in the nearest band. This is indicated with an asterisk. For instance, of the 34 Year 7 girls in the 14-14:11 age bracket, up to 5 students are included from older age brackets. As a result, the sum of each row may not equal the totals reported.

Figure 3

Enrolments (FTE) in NSW government schools by year of schooling and gender, mid-year 2020

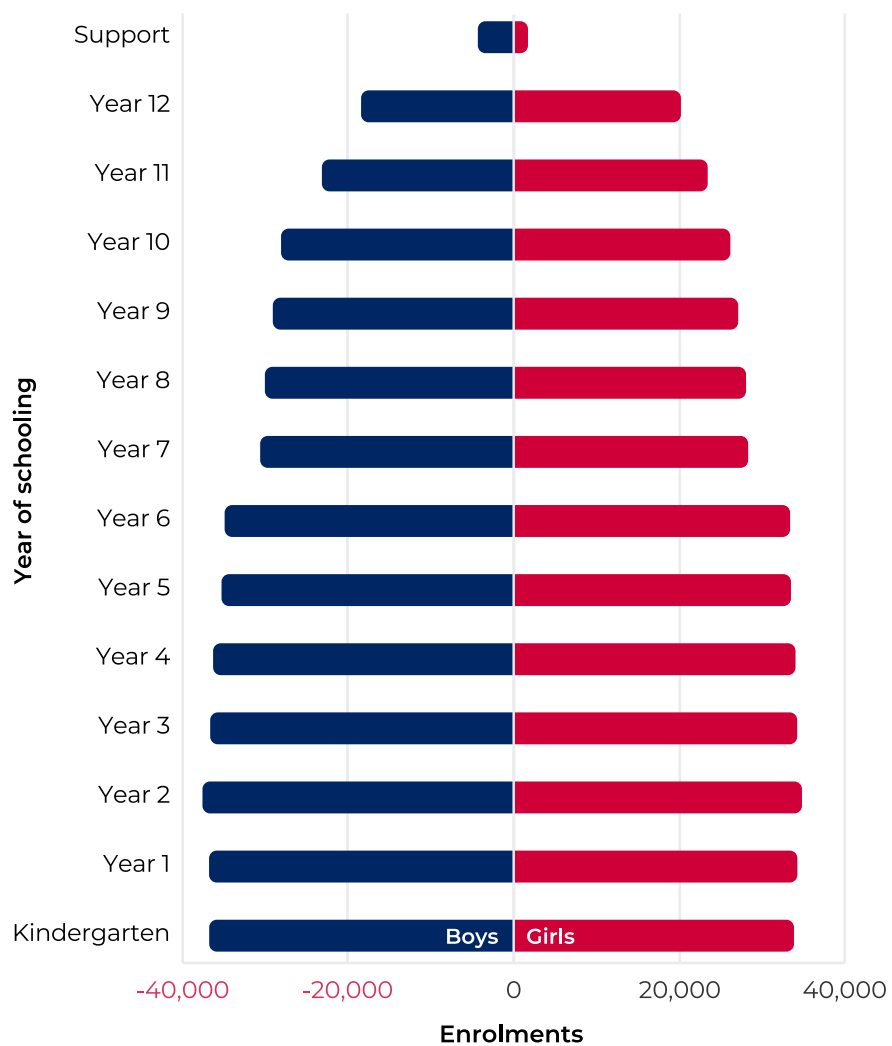
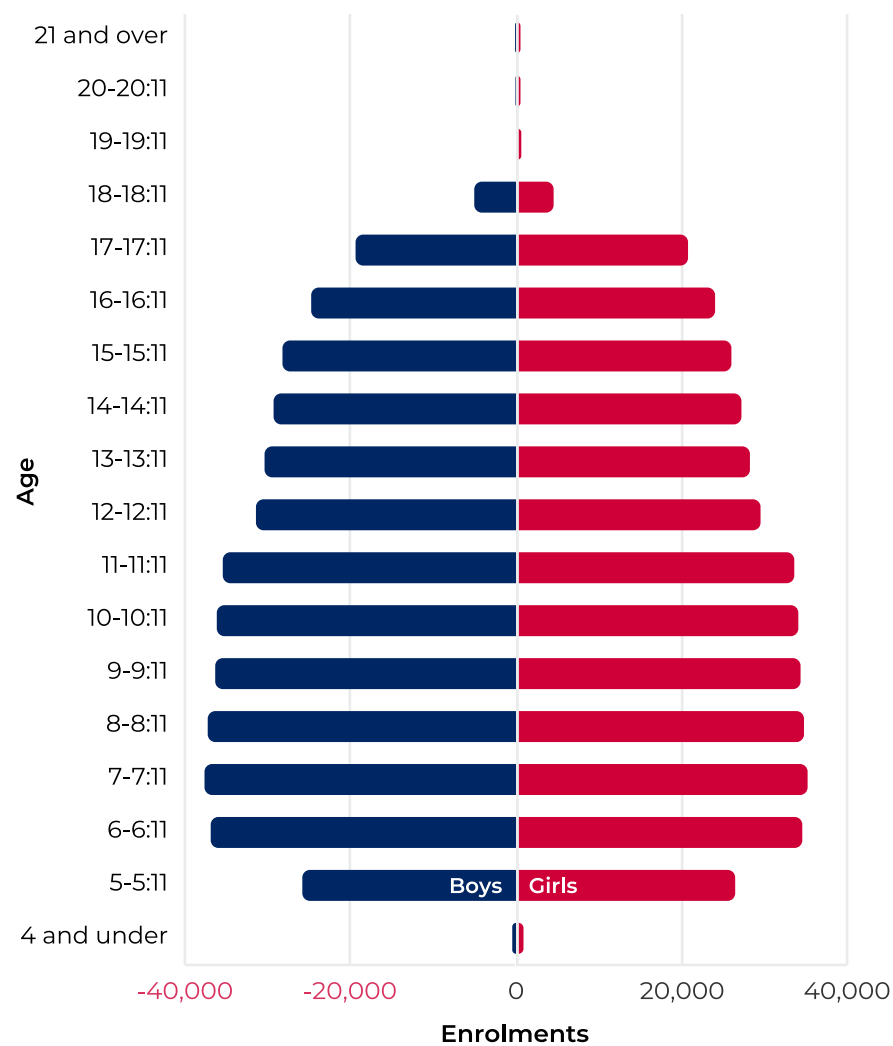


Figure 4

Enrolments (FTE) in NSW government schools by age and gender, mid-year 2020



Notes:

- From 2020, 'Support' includes only students in Schools for specific purposes (SSPs). Students in mainstream support classes are reported by their underlying grade of enrolment.

Table 11

Age-grade distribution of students in NSW government schools, mid-year 2020, part-time secondary students by age and year of schooling

Age Years:months	Year 11		Year 12		Total		Total part-time
	Boys	Girls	Boys	Girls	Boys	Girls	
Under 16							5
16-16:11	114*	139*	8*	8	122*	147*	264
17-17:11	47	52	367	459	414	511	925
18-18:11	5	6	159	210	164	216	380
19-19:11	2	3	28	38	30	41	71
20-20:11	1	1	1	6	2	7	9
21 and over	45	54	1	2	46	56	102
Subtotal	214	255	564	723	778	978	
Total	469		1,287		1,756		1,756

Full-time equivalent

Subtotal	102.2	125.3	389.9	510.4	492.1	635.7	1,127.8
Total	227.5		900.3		1,127.8		

Notes:

- In most scholastic years there are a small number of students in atypical age groups. These have been included in the nearest band. This is indicated with an asterisk. For instance, of the 8 Year 12 girls in the 16-16:11 age bracket, up to 5 students are included from younger age brackets. As a result, the sum of each row may not equal the totals reported.
- Refer to explanatory notes 7 and 8.

Table 12

Enrolments in support classes and schools for specific purposes (SSPs) by category, mid-year 2020

Category	Primary	Secondary	Schools for specific purposes (SSP)	Total
AU	1,594	1,464	70	3,128
BD	19	51	442	512
DB			3	3
ED	391	749	1,020	2,160
H	103	138		241
IE	38	1,701		1,739
IM	1,482	3,376		4,858
IO	559	722		1,281
IO/AU	811	204	173	1,188
IO/IS	483	518	3,010	4,011
IS	18		93	111
JJ			199	199
MC	3,289	2,576	719	6,584
P	39	57	12	108
TUT	5	97	24	126
V			15	15
Total	8,831	11,653	5,780	26,264

Key:

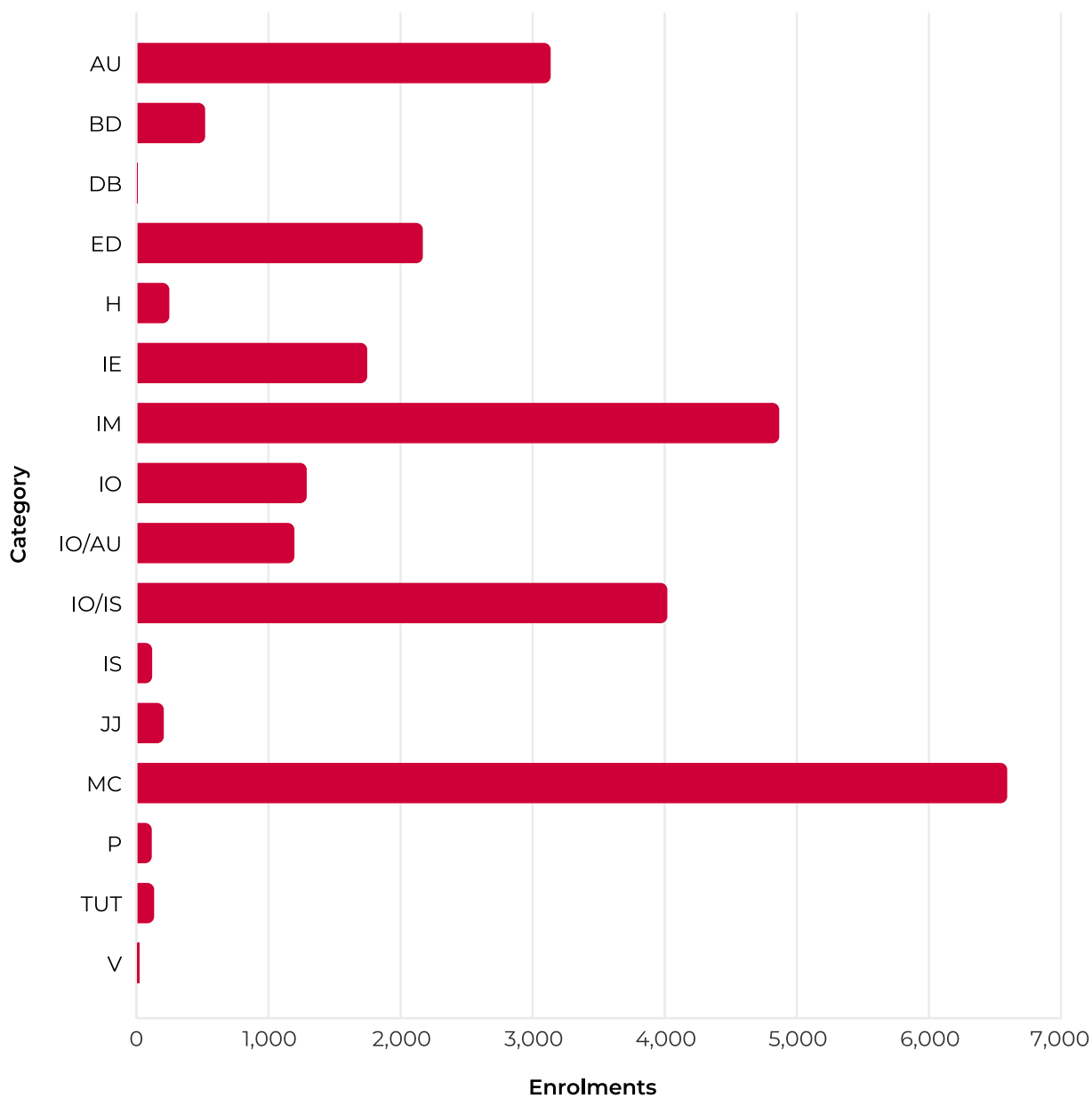
AU	Autism	IO/AU	Both autism and moderate intellectual disability
BD	Behaviour disorder	IO/IS	Moderate or severe intellectual disability
DB	Visual and hearing disability	IS	Severe intellectual disability
ED	Emotional disturbance	JJ	Juvenile Justice
H	Hearing disability	MC	Multicategorical
IE	Intensive English	P	Physical disability
IM	Mild intellectual disability	TUT	Tutorial
IO	Moderate intellectual disability	V	Visual disability

Notes:

- Students in SSPs, except those in juvenile justice schools, are reported by the type of support class they are enrolled in, not by the type of SSP.
- From 2020, students in mainstream support classes are reported by their underlying grade of enrolment.
- Refer to explanatory notes 3 and 5.

Figure 5

Enrolments in support classes in mainstream schools and SSPs by category, mid-year 2020



Key:

AU Autism	IM Mild intellectual disability	MC Multicategorical
BD Behaviour disorder	IO Moderate intellectual disability	P Physical disability
DB Visual and hearing disability	IO/AU Both autism and moderate intellectual disability	TUT Tutorial
ED Emotional disturbance	IO/IS Moderate or severe intellectual disability	V Visual disability
H Hearing disability	IS Severe intellectual disability	
IE Intensive English	JJ Juvenile Justice	

Table 13**Age-grade distribution of students in NSW government schools, mid-year 2020, students in schools for specific purposes (SSPs) by age and category**

Age Years:months	BD	ED	IO/AU	IO/IS	IS	JJ	MC	Total		All
								Boys	Girls	
Under 5			1	15			3	12	7	19
5-5:11		2	5	129	4		29	132	39	171
6-6:11		16	14	264	4		35	251	91	342
7-7:11		28	13	213	9		57	238	91	329
8-8:11		38	16	196	6		49	224	90	314
9-9:11		36	10	183	9		56	226	77	303
10-10:11	12	61	10	196	12		55	277	78	355
11-11:11	29	75	16	219	4		60	325	97	422
12-12:11	34	57	16	241	5		68	308	128	436
13-13:11	76	103	18	253	7	3	84	409	146	555
14-14:11	109	150	13	223	10	17	47	423	150	573
15-15:11	111	178	14	244	7	34	54	464	188	652
16-16:11	51	133	15	287	6	53	48	425	182	607
17-17:11	17	106	5	238	3	44	48	308	156	464
18-18:11	3	31	7	107	5	28	26	150	58	208
19 and over		6		2	2	20		25	5	30
Subtotal								4,197	1,583	
Total	442	1,020	173	3,010	93	199	719	5,780		5,780

Key:

BD	Behaviour disorder
ED	Emotional disturbance
IO/AU	Both autism and moderate intellectual disability
IO/IS	Moderate or severe intellectual disability
IS	Severe intellectual disability
JJ	Juvenile Justice
MC	Multicategorical

Notes:

- Students in SSPs, except those in juvenile justice schools, are reported by the type of support class they are enrolled in, not by the type of SSP.
- The total figures includes additional support class types (autism, physical disability, tutorial class, visual disability, both visual and hearing disability). These figures have not been provided separately in the table due to suppression rules.
- Refer to explanatory note 3.

Table 14**Age distribution of students in NSW government preschools and early intervention programs, mid-year 2020****Preschools**

Age Years:months	All students	Aboriginal and Torres Strait Islander students
3 and under	123	30
4-4:11	3,299	430
5-5:11	849	162
6 and over		
Total	4,271	622

Early intervention

Age Years:months	All students	Aboriginal and Torres Strait Islander students
3 and under	35	8
4-4:11	322	59
5-5:11	369	44
6 and over	1	
Total	727	111

Notes:

- Figures reported above are children enrolled in a preschool or an Early Intervention program that is run by a NSW government school. These government preschool classes provide full-time or part-time schooling at pre-primary level.
- In NSW, most children receiving a preschool education are enrolled at a government funded community preschool or in a Long Day Care centre which offers a preschool program.

Table 15**Enrolments (FTE) in distance education by year of schooling, mid-year 2020**

Primary	Boys	Girls	Total
Kindergarten	45	47	92
Year 1	58	35	93
Year 2	56	51	107
Year 3	60	45	105
Year 4	62	44	106
Year 5	66	65	131
Year 6	75	43	118
Primary support	4	1	5
Total	426	331	757

Secondary	Boys	Girls	Total
Year 7	54	50	104
Year 8	98	91	189
Year 9	205	188	393
Year 10	279	295	574
Year 11	124.4	153.3	277.7
Year 12	88.7	109.3	198.0
Secondary support	21	19	40
Total	870.1	905.6	1,775.7

Total all students	1,296.1	1,236.6	2,532.7
---------------------------	----------------	----------------	----------------

Notes:

- All enrolments are reported in full-time equivalent units (FTE), and include full-time and part-time students whose main school is the distance education centre.
- Refer to explanatory note 6.

Table 16

Enrolments (FTE) of Aboriginal students by ABS Statistical Area Level 4 groupings and grade group in NSW government schools, mid-year 2020

Statistical area level 4 group	K-2	Y3-6	Primary total	Y7-10	Y11-12	Secondary total	SA4 groups total	% Aboriginal
Sydney-North	132	169	301	152	61.0	213.0	532.0	0.6%
Sydney-Inner	424	548	972	444	145.6	589.6	1,598.6	2.8%
Sydney-South	309	408	717	439	140.2	579.2	1,329.2	1.7%
Sydney-South West	1,243	1,560	2,803	1,335	328.8	1,663.8	4,606.8	5.0%
Sydney-West	1,065	1,211	2,276	984	310.8	1,294.8	3,696.8	4.0%
Sydney-North West	1,086	1,312	2,398	1,131	287.6	1,418.6	3,868.6	5.8%
Sydney total	4,259	5,208	9,467	4,485	1,274.0	5,759.0	15,632.0	3.3%
North East NSW	2,495	3,481	5,976	3,280	862.1	4,142.1	10,160.1	16.4%
North West NSW	4,628	5,698	10,326	5,372	1,221.3	6,593.3	17,019.3	25.9%
South West NSW	2,276	2,789	5,065	2,610	580.5	3,190.5	8,382.5	15.8%
South East NSW	1,935	2,425	4,360	2,305	531.3	2,836.3	7,274.3	10.1%
Central Coast, Newcastle	2,207	2,727	4,934	2,678	633.2	3,311.2	8,361.2	10.5%
Regional total	13,541	17,120	30,661	16,245	3,828.4	20,073.4	51,197.4	15.4%
NSW	17,800	22,328	40,128	20,730	5,102.4	25,832.4	66,829.4	8.2%
Aboriginal total as a percentage of total NSW enrolments	8.3%	8.0%	8.2%	9.1%	6.0%	8.3%	8.2%	

Notes:

- Students in Distance Education and Opportunity Classes (OC) are included with their appropriate grade levels.
- Aggregate geographical data are reported by groupings of ABS statistical area 4 (refer to the maps).
- From 2020, students in mainstream support classes are reported by their underlying grade of enrolment.
- There were 869 Aboriginal students enrolled in SSPs, representing 15% of total SSP enrolments. Aboriginal students in SSPs are not included in the grade group data but are included in the SA4 groups total column.
- Refer to explanatory notes 2, 9 and 16.

Table 17**Enrolment of students of language background other than English (LBOTE) in NSW government schools, March 2020 by SA4 groupings and grade groups**

SA4 groupings	K-2	3-6	Primary total	7-10	11-12	Secondary total	SA4 groups total	% LBOTE
Sydney-North	12,858	14,901	27,759	10,406	4,764	15,170	43,114	46.9%
Sydney-Inner	7,845	9,557	17,402	9,252	4,314	13,566	31,103	53.3%
Sydney-South	12,363	16,254	28,617	13,071	5,925	18,996	48,042	61.3%
Sydney-South West	13,613	19,274	32,887	17,532	7,796	25,328	58,547	63.6%
Sydney-West	20,062	24,286	44,348	15,061	6,131	21,192	65,990	71.2%
Sydney-North West	6,299	8,012	14,311	6,048	3,073	9,121	23,574	34.9%
Sydney total	73,040	92,284	165,324	71,370	32,003	103,373	270,370	56.2%
North East NSW	1,347	1,671	3,018	1,321	519	1,840	4,865	7.7 %
North West NSW	1,049	1,311	2,360	1,096	400	1,496	3,868	5.8 %
South West NSW	1,171	1,456	2,627	1,164	480	1,644	4,323	8.0 %
South East NSW	2,491	3,218	5,709	2,663	1,088	3,751	9,523	13.0 %
Central Coast, Newcastle	2,325	2,976	5,301	2,631	988	3,619	8,982	11.1 %
Regional total	8,383	10,632	19,015	8,875	3,475	12,350	31,561	9.3%
NSW	81,454	102,973	184,427	80,297	35,506	115,803	302,099	36.9%

Notes:

- LBOTE enrolments for 2020 are compared to enrolments (headcount) in March 2020.
- NSW total includes Norfolk Island which is not included in SA4 groupings.
- There were 1,869 LBOTE students enrolled in SSPs, representing 38.2% of total SSP enrolments. This figure is not displayed separately for each SA4 grouping but is included in the SA4 Groups Total column.
- Primary students in mainstream support classes are included in Year 3 to 6. Secondary students in mainstream support classes are included in Year 7 to 10.
- For more detailed analysis of students of language background other than English, please refer to CESE factsheet - Language Diversity in NSW, 2020.
- See explanatory notes 11 and 16.

Table 18**Enrolments (FTE) in NSW government schools by FOEI quarters and SA4 groupings, April 2020**

SA4 groupings	Quarter 1	Quarter 2	Quarter 3	Quarter 4	Total	Quarter 1 (%)
Sydney-North	2,995	9,218	26,828	52,949	91,990	3.3%
Sydney-Inner	4,988	7,784	16,352	29,873	58,997	8.5%
Sydney-South	15,503	19,608	24,311	19,202	78,624	19.7%
Sydney-South West	34,944	28,229	20,067	9,793	93,033	37.6%
Sydney-West	24,405	20,514	25,294	23,785	93,998	26.0%
Sydney-North West	12,447	16,538	18,975	19,994	67,954	18.3%
Sydney total	95,282	101,891	131,827	155,596	484,596	19.7%
North East NSW	21,430	19,458	13,806	8,401	63,095	34.0%
North West NSW	28,825	21,025	11,852	5,829	67,531	42.7%
South West NSW	20,193	16,890	10,947	5,869	53,899	37.5%
South East NSW	20,399	21,930	18,048	13,026	73,403	27.8%
Central Coast, Newcastle	20,816	23,907	20,394	16,220	81,337	25.6%
Regional total	111,663	103,210	75,047	49,345	339,265	32.9%
NSW	206,945	205,101	206,874	204,941	823,861	25.1%

Notes:

- Enrolments are from system extracts in April and are not mid-year census enrolments which are extracted in August.
- Refer to explanatory notes 15 and 16.

Study patterns

Table 19

Primary students in NSW government schools studying a language other than English by year of schooling and language, May 2020

Language name	Kinder	Year 1	Year 2	Year 3	Year 4	Year 5	Year 6	Total
Chinese (Mandarin)	2,075	2,576	2,825	2,899	2,717	2,031	2,158	17,281
Arabic	1,340	1,415	1,382	1,498	1,354	1,227	1,123	9,339
Italian	1,070	1,228	1,358	1,410	1,357	1,173	1,209	8,805
Japanese	734	896	896	941	949	938	964	6,318
French	678	716	762	592	808	678	664	4,898
Vietnamese	562	710	760	637	623	662	656	4,610
Wiradjuri	482	514	557	549	495	509	527	3,633
Greek	675	464	511	389	382	439	491	3,351
Korean	570	444	458	395	367	378	332	2,944
Bundjalung	216	232	218	217	205	211	212	1,511
Spanish	179	196	214	209	228	202	200	1,428
Gumbaynggir / Gumbanggir	150	175	177	189	188	222	228	1,329
Indonesian	94	74	85	221	222	249	373	1,318
Hindi	55	257	280	167	243	103	97	1,202
Assyrian	81	132	146	149	160	146	180	994
Macedonian	33	79	85	115	129	65	82	588
Gamilaraay / Gamilaroi / Kamilaroi	80	77	104	77	88	75	71	572
Dhanggatti / Dunghutti / Dainggatti / Thunghutti	75	69	65	76	89	76	83	533
Hebrew	71	81	107	57	32	39	42	429
Bengali	58	91	65	74	56	42	30	416
Tamil	27	78	88	87	80	14	19	393
Khmer	34	52	65	58	56	54	43	362
Turkish	71	46	37	41	37	33	45	310
Punjabi	37	53	52	46	69	38		295
Dari	35	25	24	27	29	73	50	263
Urdu	40	45	38	29	39	28	19	238
Paakantji / Barkindji	48	52	51	10	10	27	29	227
Auslan	53	24	25	31	28	21	24	206
Birpai / Biripi		4	4	10	10	76	90	194
Ngemba / Ngiyampaa	22	26	34	24	30	29	29	194
Yuwaalaraay / Yuwaalayaay	23	35	24	28	25	24	30	189
Norfk-Pitcairn	22	18	20	20	25	27	22	154

Table 19**Primary students in NSW government schools studying a language other than English by year of schooling and language, May 2020 (continued)**

Language name	Kinder	Year 1	Year 2	Year 3	Year 4	Year 5	Year 6	Total
Serbian		29	19	22	31	23	24	148
Nepali	29	30	16	35	14	12	11	147
Awakabal	19	18	19	21	22	27	19	145
Telugu		32	31	28	25			116
Samoaan	3	16	17	18	14	7	19	94
Gathang / Kattang	14	14	16	7	14	4	14	83
Greek (Modern)	8	23	3	12	9	4	13	72
Russian	15	10	9	8	8	7	7	64
Maori	7	10	9	5	5	10	8	54
German	11	2	7	4	5	4	2	35
Farsi	5		6	4		5	2	22
Chinese (Cantonese)				7	2	5	4	18
Sign Languages	3	1	2	5	1	1	2	15
Tongan	3	2	2	1	1	1	1	11
Muruwari / Murrawarri	1	2	2		1		3	9
Total	9,808	11,073	11,675	11,449	11,282	10,019	10,251	75,557

Notes:

- The table includes data from the K-6 Community Languages Program (CLP) and the K-6 Languages Program (non-CLP) collections.
- Students may study more than one language.
- Students in Distance Education and Opportunity Classes (OC) are included with their appropriate grade levels.
- There were an additional 263 students in support classes who studied a language other than English.
- The overall totals for individual languages may include students in support classes.

Table 20

Language participation Year 7-9 by gender and year of schooling, August 2020

Language name	Year 7			Year 8			Year 9			All students		
	Boys	Girls	Total	Boys	Girls	Total	Boys	Girls	Total	Boys	Girls	Total
Japanese	6,571	5,906	12,477	6,203	6,079	12,282	1,177	1,426	2,603	13,951	13,411	27,362
French	3,303	3,220	6,523	3,244	3,790	7,034	352	742	1,094	6,899	7,752	14,651
Italian	1,567	1,199	2,766	1,155	1,197	2,352	154	250	404	2,876	2,646	5,522
Chinese (Mandarin)	1,097	1,091	2,188	1,382	1,136	2,518	275	337	612	2,754	2,564	5,318
Spanish	653	596	1,249	874	905	1,779	86	190	276	1,613	1,691	3,304
Indonesian	890	822	1,712	488	456	944	26	58	84	1,404	1,336	2,740
German	437	357	794	528	476	1,004	115	126	241	1,080	959	2,039
Latin	203	122	325	181	216	397	48	91	139	432	429	861
Korean	124	123	247	205	243	448	29	36	65	358	402	760
Greek (modern)	101	25	126	269	194	463	21	26	47	391	245	636
Wiradjuri	148	137	285	155	156	311	10	9	19	313	302	615
Gumbaynggir / Gumbanggir	203	201	404	42	40	82		5	5	245	246	491
Gamilaraay / Gamilaroi / Kamilaroi	130	124	254	73	55	128	21	24	45	224	203	427
Arabic	87	82	169	11	136	147	32	75	107	130	293	423
Dhurga	112	107	219				6	6	12	118	113	231
Vietnamese	61	53	114	24	35	59	8	14	22	93	102	195
Gathang / Kattang	78	80	158							78	80	158
Dharawal / Tharawal	67	67	134							67	67	134
Filipino	79	31	110							79	31	110
Nagarabal / Ngorabul / Yugambal	54	37	91							54	37	91
Paakantji / Barkindji	21	25	46	19	14	33				40	39	79
Ngemba / Ngiyampaa	19	12	31	12	17	29				31	29	60
Macedonian	7	14	21	8	10	18	6	12	18	21	36	57
Serbian	8	10	18	4	20	24	6	6	12	18	36	54
Yuwaalaraay / Yuwaalayaay	3	4	7	21	14	35	1		1	25	18	43
Chinese (Cantonese)	26	17	43							26	17	43
Turkish	2	8	10	9	8	17	5	6	11	16	22	38
Polish	9	7	16	3	5	8	3	9	12	15	21	36

Table 20

Language participation Year 7-9 by gender and year of schooling, August 2020 (continued)

Language name	Year 7			Year 8			Year 9			All students		
	Boys	Girls	Total	Boys	Girls	Total	Boys	Girls	Total	Boys	Girls	Total
Wonnarua	12	6	18	6	4	10	2	3	5	20	13	33
Sign languages	7	8	15	8	5	13				15	13	28
Russian	2	2	4		1	1	9	13	22	11	16	27
Hindi	4	4	8	5	1	6	6	7	13	15	12	27
Punjabi	4	4	8	5	3	8	1	7	8	10	14	24
Japanese life skills	3	6	9	11	4	15				14	10	24
Hebrew	6		6	11	3	14				17	3	20
Croatian		5	5	2	6	8	1	6	7	3	17	20
Greek (classical)				11		11	4		4	15		15
Tamil		3	3	4	3	7	2	1	3	6	7	13
Bosnian	2	1	3	4	2	6	1		1	7	3	10
Portuguese		2	2		4	4		3	3		9	9
Wailwan	2	3	5	2	1	3				4	4	8
Armenian	2	1	3	1		1	2	1	3	5	2	7
Maltese				1		1	3	1	4	4	1	5
Bengali				1		1	2		2	3		3
Total	16,104	14,522	30,626	14,982	15,239	30,221	2,414	3,490	5,904	33,500	33,251	66,751

Notes:

- The table includes students studying a language through the Saturday School of Community Languages.
- The table includes only students learning a language on average for more than 1 hour per week for 35 or more weeks a year.
- There were an additional 19,857 students who were learning a language for a shorter duration.

Table 21

Board Developed Course enrolments in Year 10 subjects in NSW government schools, 2020

Course ID	Course name	Hours	Boys	Girls	Total
300	English	200	25,869	24,655	50,524
302	English (Life Skills)		1,472	620	2,092
323	Mathematics	200	25,946	24,724	50,670
325	Mathematics (Life Skills)		1,455	629	2,084
350	Science	200	25,914	24,645	50,559
352	Science (Life Skills)		1,459	618	2,077
410	Aboriginal Studies	200	137	129	266
411	Aboriginal Studies	100	59	97	156
412	Aboriginal Studies (Life Skills)		13	11	24
413	Aboriginal Studies Life Skills	100	23	2	25
430	Commerce	200	5,161	4,768	9,929
431	Commerce	100	1,267	1,288	2,555
432	Commerce (Life Skills)		7	4	11
433	Commerce Life Skills	100	2	3	5
440	Geography	200	183	74	257
441	Geography	100	106	243	349
450	History	200	1,633	1,627	3,260
451	History	100	608	789	1,397
452	History Elective Life Skills		5	6	11
453	History Elective Life Skills	100	13	3	16
500	Work Education	200	247	232	479
501	Work Education	100	432	395	827
502	Work Education (Life Skills)		192	74	266
503	Work Education Life Skills	100	110	53	163
791	Aboriginal Languages	100	17	20	37
792	Aboriginal Languages (Life Skills)		23	6	29
793	Aboriginal Languages Life Skills	100	5	1	6
800	Arabic	200	18	37	55
801	Arabic	100	1	29	30
802	Arabic (Life Skills)			1	1
810	Chinese	200	155	185	340
811	Chinese	100	33	66	99
820	Classical Greek	200	2		2
870	French	200	220	574	794
871	French	100	47	79	126
873	French Life Skills	200	2		2

Table 21

Board Developed Course enrolments in Year 10 subjects in NSW government schools, 2020 (continued)

Course ID	Course name	Hours	Boys	Girls	Total
874	French Life Skills	100	7	3	10
880	German	200	114	65	179
881	German	100	28	29	57
890	Hebrew	200	2		2
891	Hebrew	100		1	1
910	Indonesian	200	25	55	80
911	Indonesian	100	1	1	2
913	Indonesian Life Skills	100	1		1
920	Italian	200	64	160	224
921	Italian	100	19	38	57
923	Italian Life Skills	100	9	4	13
924	Italian Life Skills	200		1	1
930	Japanese	200	799	1,117	1,916
931	Japanese	100	183	204	387
933	Japanese Life Skills	200	12	7	19
934	Japanese Life Skills	100	4	1	5
940	Korean	200	20	37	57
941	Korean	100	7	20	27
950	Latin	200	46	79	125
951	Latin	100		1	1
981	Macedonian	200	3	8	11
982	Macedonian	100	1	2	3
990	Modern Greek	200	7	20	27
991	Modern Greek	100		1	1
1010	Russian	200	2	6	8
1011	Russian	100	2	3	5
1040	Spanish	200	71	82	153
1041	Spanish	100	15	23	38
1043	Spanish Life Skills	200	1		1
1044	Spanish Life Skills	100	2		2
1050	Turkish	200	2	8	10
1051	Turkish	100	2		2
1071	Vietnamese	200	14	15	29
1072	Vietnamese	100	16	15	31
1605	Agricultural Technology	200	1,916	1,605	3,521
1606	Agricultural Technology	100	682	634	1,316

Table 21

Board Developed Course enrolments in Year 10 subjects in NSW government schools, 2020 (continued)

Course ID	Course name	Hours	Boys	Girls	Total
1607	Agricultural Technology (Life Skills)		66	19	85
1608	Agricultural Technology Life Skills	100	28	10	38
1609	Agricultural Technology Life Skills	200	4	2	6
1625	Food Technology	200	3,915	6,750	10,665
1626	Food Technology	100	1,590	2,019	3,609
1627	Food Technology (Life Skills)		329	170	499
1628	Food Technology Life Skills	100	148	70	218
1650	Design and Technology	200	639	561	1,200
1651	Design and Technology	100	518	353	871
1652	Design & Technology (Life Skills)		117	53	170
1653	Design & Technology Life Skills	100	22	10	32
1700	Graphics Technology	200	575	234	809
1701	Graphics Technology	100	197	77	274
1702	Graphics Technology (Life Skills)		5	2	7
1703	Graphics Technology Life Skills	100	7	1	8
1800	Industrial Technology (Automotive)	200	96	6	102
1801	Industrial Technology (Automotive)	100	86	17	103
1802	Industrial Technology (Building and Construction)	200	365	22	387
1803	Industrial Technology (Building and Construction)	100	144	16	160
1804	Industrial Technology (Ceramics)	200	8	19	27
1805	Industrial Technology (Ceramics)	100	5	6	11
1806	Industrial Technology (Electronics)	200	516	26	542
1807	Industrial Technology (Electronics)	100	239	18	257
1808	Industrial Technology (Engineering)	200	2,217	218	2,435
1809	Industrial Technology (Engineering)	100	494	62	556
1810	Industrial Technology (Farm Maintenance)	200	3	2	5
1811	Industrial Technology (Farm Maintenance)	100	6	4	10
1814	Industrial Technology (Metal)	200	1,709	155	1,864
1815	Industrial Technology (Metal)	100	874	164	1,038
1816	Industrial Technology (Multimedia/Photography)	200	564	228	792
1817	Industrial Technology (Multimedia/Photography)	100	326	153	479
1820	Industrial Technology (Timber)	200	5,317	1,033	6,350
1821	Industrial Technology (Timber)	100	1,480	497	1,977
1830	Information & Software Technology	200	3,510	1,042	4,552
1831	Information & Software Technology	100	960	317	1,277
1832	Information & Software Technology (Life Skills)		43	11	54

Table 21

Board Developed Course enrolments in Year 10 subjects in NSW government schools, 2020 (continued)

Course ID	Course name	Hours	Boys	Girls	Total
1833	Information and Software Technology Life Skills	100	33	10	43
1840	Industrial Technology - Automotive (Life Skills)		2		2
1841	Industrial Technology - Building & Construction (Life Skills)		3		3
1843	Industrial Technology - Electronics (Life Skills)		4		4
1844	Industrial Technology - Engineering (Life Skills)		12	2	14
1847	Industrial Technology - Metal (Life Skills)		37		37
1848	Industrial Technology - Multimedia/Photography (Life Skills)		9	2	11
1850	Industrial Technology - Timber (Life Skills)		111	16	127
1860	Industrial Technology - Automotive Life Skills	100	1		1
1861	Industrial Technology - Building & Construction Life Skills	100	2	3	5
1864	Industrial Technology - Engineering Life Skills	100	2		2
1867	Industrial Technology - Metal Life Skills	100	12	1	13
1868	Industrial Technology - Multimedia Life Skills	100	2		2
1870	Industrial Technology - Timber Life Skills	100	42	7	49
1900	Textiles Technology	200	32	832	864
1901	Textiles Technology	100	40	473	513
1902	Textiles Technology (Life Skills)		5	6	11
1903	Textiles Technology Life Skills	100	3	6	9
2000	Dance	200	50	1,328	1,378
2001	Dance	100	25	284	309
2002	Dance (Life Skills)		17	9	26
2003	Dance Life Skills	100	5	16	21
2010	Drama	200	986	2,191	3,177
2011	Drama	100	447	708	1,155
2012	Drama (Life Skills)		41	26	67
2013	Drama Life Skills	100	17	16	33
2050	Music	200	3,202	2,994	6,196
2051	Music	100	920	847	1,767
2052	Music (Life Skills)		173	65	238
2053	Music Life Skills	100	114	48	162
2060	Visual Arts	200	2,145	5,489	7,634
2061	Visual Arts	100	674	1,541	2,215
2062	Visual Arts (Life Skills)		338	182	520
2063	Visual Arts Life Skills	100	151	70	221
2070	Visual Design	200	202	359	561
2071	Visual Design	100	209	374	583

Table 21**Board Developed Course enrolments in Year 10 subjects in NSW government schools, 2020 (continued)**

Course ID	Course name	Hours	Boys	Girls	Total
2072	Visual Design (Life Skills)		12	8	20
2073	Visual Design Life Skills	100	2	4	6
2080	Photographic and Digital Media	200	1,216	2,445	3,661
2081	Photographic and Digital Media	100	629	1,111	1,740
2082	Photographic and Digital Media (Life Skills)		23	15	38
2083	Photographic and Digital Media Life Skills	100	11	6	17
2420	Personal Development, Health and P.E.	200	20,478	19,573	40,051
2421	Personal Development, Health and P.E.	100	4,978	4,447	9,425
2423	Personal Development, Health and P.E. Life Skills		1,180	515	1,695

Number of students meeting the curriculum requirements for the Record of School Achievement (RoSA), Year 10 students in NSW government schools, 2020

	Boys	Girls	Total
Number of students	26,704	24,877	51,581

Source: Department of Education, data derived from NSW Education Standards Authority (NESA) data, January 2021.

Notes:

- The table only includes Board Developed Courses.
- The table includes students studying a language through the Saturday School of Community Languages.
- Hours equal to the number of hours studied over Years 9 and 10.
- From 2012, eligible students who leave school before receiving their HSC will receive the NSW RoSA
- Students need to complete the mandatory requirements for Stage 5 (Year 10) to be eligible for a RoSA. They must have:
 - attended a government school, an accredited non-government school or a recognised school outside NSW;
 - undertaken and completed courses of study that satisfy NESA curriculum and assessment requirements for the Record of School Achievement;
 - complied with any other regulations or requirements (such as attendance) imposed by the Minister or NESA; and
 - completed Year 10.
- Students intending to leave school before completing their HSC can take optional online literacy and numeracy tests. They are designed to provide an overview of a student's level of achievement in these areas.
- Students are required to complete the following mandatory curriculum for the RoSA:
 - English
 - Mathematics
 - Science
 - Human Society and its Environments
 - Languages other than English
 - Technological and Applied Studies
 - Creative Arts
 - Personal Development, Health and Physical Education.

Table 22

Course enrolments in Year 11 and Year 12 subjects in NSW government schools, 2020

Course name	Units	Year 11			Year 12		
		Boys	Girls	Total	Boys	Girls	Total
Aboriginal Studies	2	253	648	901	146	413	559
Aboriginal Studies Life Skills	2	46	25	71	19	15	34
Agriculture	2	721	741	1,462	414	512	926
Agriculture Life Skills	2	52	24	76	52	20	72
Ancient History	2	2,647	3,202	5,849	1,907	2,504	4,411
Ancient History Life Skills	2	78	35	113	60	28	88
Arabic Continuers	2	53	124	177	67	133	200
Arabic Extension	1				13	48	61
Armenian Continuers	2	1	7	8	3	2	5
Automotive	2	13		13	4	1	5
Automotive	4	1		1	1	1	2
Automotive Examination (Mechanical technology)	2				2		2
Automotive Examination (Vehicle body)	2				1	1	2
Biology	2	5,400	9,061	14,461	3,821	6,730	10,551
Business and Economics Life Skills	2	45	23	68	32	15	47
Business Services	2	459	912	1,371	260	654	914
Business Services	4				11	33	44
Business Services Examination	2				190	479	669
Business Services Specialisation Study	1					3	3
Business Studies	2	6,278	5,747	12,025	4,614	4,260	8,874
Chemical World Science Life Skills	2	6	5	11	7	3	10
Chemistry	2	4,542	4,132	8,674	3,177	2,683	5,860
Chinese and Literature	2	201	193	394	168	176	344
Chinese Beginners	2	45	73	118	26	46	72
Chinese Continuers	2	38	53	91	27	37	64
Chinese Extension	1				3	11	14
Chinese in Context	2	47	65	112	37	46	83
Citizenship and Legal Studies Life Skills	2	30	23	53	24	13	37
Classical Greek Continuers	2	1	4	5			
Classical Greek Extension	1					2	2
Community and Family Studies	2	864	6,497	7,361	498	4,963	5,461
Community and Family Studies Life Skills	2	85	127	212	49	99	148
Construction	2	3,077	194	3,271	1,988	116	2,104
Construction	4	41	1	42	30	3	33

Table 22

Course enrolments in Year 11 and Year 12 subjects in NSW government schools, 2020 (continued)

Course name	Units	Year 11			Year 12		
		Boys	Girls	Total	Boys	Girls	Total
Construction Examination	2				1,285	81	1,366
Construction School-based Apprenticeship	2	1		1	3		3
Creative Arts Life Skills	2	348	145	493	269	130	399
Croatian Continuers	2				1	1	2
Dance	2	54	762	816	30	558	588
Dance Life Skills	2	3	15	18	3	11	14
Design and Technology	2	1,394	814	2,208	868	580	1,448
Design and Technology Life Skills	2	53	23	76	56	23	79
Drama	2	835	1,769	2,604	637	1,243	1,880
Drama Life Skills	2	43	33	76	35	20	55
Dutch Continuers	2	1		1			
Earth and Environmental Science	2	1,062	1,230	2,292	669	661	1,330
Earth and Space Science Life Skills	2	58	16	74	45	8	53
Economics	2	2,095	1,287	3,382	1,519	879	2,398
Electrotechnology	2	2		2	4		4
Electrotechnology	4				2		2
Electrotechnology Examination	2				3		3
Engineering Studies	2	2,228	265	2,493	1,410	140	1,550
English (Advanced)	2	5,573	8,321	13,894	4,709	7,289	11,998
English (Standard)	2	10,153	10,307	20,460	8,359	9,004	17,363
English EAL/D	2	851	929	1,780	727	854	1,581
English Extension	1	1,030	1,753	2,783			
English Extension 1	1				472	1,166	1,638
English Extension 2	1				187	515	702
English Life Skills	2	1,382	645	2,027	1,126	574	1,700
English Studies	2	4,338	2,505	6,843	3,525	2,522	6,047
English Studies Examination	2				975	702	1,677
Entertainment Industry	2	576	536	1,112	336	329	665
Entertainment Industry	4				11	4	15
Entertainment Industry Examination	2				266	280	546
Entertainment Industry Specialisation Study	1	6	11	17	160	170	330
Filipino Continuers	2	1	4	5	3	3	6
Financial Services	2	7	14	21	5	5	10
Financial Services	4				1		1

Table 22

Course enrolments in Year 11 and Year 12 subjects in NSW government schools, 2020 (continued)

Course name	Units	Year 11			Year 12		
		Boys	Girls	Total	Boys	Girls	Total
Financial Services Examination	2				5	5	10
Food Technology	2	1,186	2,173	3,359	660	1,442	2,102
Food Technology Life Skills	2	370	190	560	274	139	413
French Beginners	2	81	314	395	83	262	345
French Continuers	2	61	221	282	50	162	212
French Extension	1				8	31	39
Geography	2	1,366	1,395	2,761	951	925	1,876
Geography Life Skills	2	89	49	138	65	23	88
German Beginners	2	40	67	107	28	32	60
German Continuers	2	28	56	84	40	55	95
German Extension	1				10	10	20
Hindi Continuers	2	7	5	12	5	4	9
History Extension	1				247	451	698
Hospitality	2	2,310	4,369	6,679	1,295	2,940	4,235
Hospitality	4	6	11	17	93	127	220
Hospitality Examination (Food and Beverage)	2				481	1,480	1,961
Hospitality Examination (Kitchen Operations and Cookery)	2				503	866	1,369
Hospitality Specialisation Study	2				9	21	30
Human Services	2	19	143	162	23	177	200
Human Services	4	1	4	5			
Human Services Examination	2				13	84	97
Human Services Specialisation Study	1					1	1
Human Society and its Environment Life Skills	2	514	225	739	373	177	550
Hungarian Continuers	2				2	2	4
IDT Examination (Digital Animation)	2				8		8
IDT Examination (Networking and Hardware)	2				13		13
IDT Examination (Web and Software Applications)	2				218	40	258
Indonesian and Literature	2	3	6	9		2	2
Indonesian Beginners	2	3	8	11	11	18	29
Indonesian Continuers	2	14	29	43	13	28	41
Indonesian Extension	1					4	4
Industrial Technology	2	5,166	939	6,105	3,084	638	3,722
Industrial Technology Life Skills	2	182	19	201	140	23	163
Information and Digital Technology	2	306	56	362	278	42	320

Table 22

Course enrolments in Year 11 and Year 12 subjects in NSW government schools, 2020 (continued)

Course name	Units	Year 11			Year 12		
		Boys	Girls	Total	Boys	Girls	Total
Information and Digital Technology	4				21	1	22
Information and Digital Technology Specialisation Study	2				6		6
Information and Digital Technology Specialisation Study	3	1		1	12	1	13
Information Processes and Technology	2	1,283	380	1,663	1,041	219	1,260
Information Processes and Technology Life Skills	2	72	18	90	73	17	90
Investigating Science	2	1,548	1,235	2,783	934	747	1,681
Investigating Science Life Skills	2	362	153	515	220	106	326
Italian Beginners	2	64	133	197	37	99	136
Italian Continuers	2	12	38	50	6	29	35
Italian Extension	1				2	5	7
Japanese and Literature	2	5	11	16	4	3	7
Japanese Beginners	2	349	398	747	218	257	475
Japanese Continuers	2	248	389	637	165	292	457
Japanese Extension	1				37	89	126
Japanese in Context	2	6	25	31	11	13	24
Khmer Continuers	2	4	6	10	9	11	20
Korean and Literature	2	13	16	29	20	20	40
Korean Beginners	2	22	100	122	17	81	98
Korean Continuers	2		19	19		11	11
Korean in Context	2	13	29	42	8	25	33
Latin Continuers	2	40	39	79	16	45	61
Latin Extension	1				17	31	48
Legal Studies	2	3,036	5,441	8,477	2,105	3,887	5,992
Living World Science Life Skills	2	112	62	174	70	43	113
Macedonian Continuers	2	7	10	17	8	4	12
Maltese Continuers	2		1	1			
Mathematics Advanced	2	7,049	6,030	13,079	4,458	4,042	8,500
Mathematics Extension	1	3,614	2,706	6,320			
Mathematics Extension 1	2				2,869	2,060	4,929
Mathematics Extension 2	2				1,367	745	2,112
Mathematics Life Skills	2	1,294	586	1,880	984	495	1,479
Mathematics Standard	2	11,563	11,626	23,189			
Mathematics Standard 1	2				2,046	1,583	3,629
Mathematics Standard 1 Examination	2				715	651	1,366

Table 22

Course enrolments in Year 11 and Year 12 subjects in NSW government schools, 2020 (continued)

Course name	Units	Year 11			Year 12		
		Boys	Girls	Total	Boys	Girls	Total
Mathematics Standard 2	2				7,428	8,319	15,747
Metal and Engineering	2				515	28	543
Metal and Engineering	4				26	4	30
Metal and Engineering Examination	2				301	19	320
Metal and Engineering School-based Apprenticeship	2				3		3
Modern Greek Beginners	2	20	17	37	8	10	18
Modern Greek Continuers	2	6	14	20	10	24	34
Modern Greek Extension	1				6	9	15
Modern History	2	4,059	4,278	8,337	2,719	2,974	5,693
Modern History Life Skills	2	81	39	120	53	28	81
Music 1	2	2,134	1,926	4,060	1,391	1,412	2,803
Music 2	2	238	235	473	177	181	358
Music Extension	1				102	105	207
Music Life Skills	2	120	66	186	103	47	150
Persian Continuers	2	7	20	27	4	15	19
Personal Development, Health & PE Life Skills	2	865	382	1,247	683	306	989
Personal Development, Health and Physical Education	2	5,090	6,293	11,383	3,592	5,014	8,606
Physical World Science Life Skills	2	21	4	25	17	4	21
Physics	2	4,957	1,546	6,503	3,561	1,068	4,629
Polish Continuers	2	3		3	3	4	7
Portuguese Continuers	2	5	6	11	5	9	14
Primary Industries	2	581	406	987	356	341	697
Primary Industries	4	5	3	8	8	10	18
Primary Industries Examination	2				223	255	478
Primary Industries Specialisation Study	2				22	18	40
Primary Industries Specialisation Study	4				11	5	16
Punjabi Continuers	2	11	9	20	6	6	12
Retail Services	2	595	1,027	1,622	424	804	1,228
Retail Services	4	1	1	2	42	35	77
Retail Services Examination	2				290	538	828
Russian Continuers	2	7	7	14	7	7	14
Science Extension	1				107	135	242
Serbian Continuers	2	7	5	12	8	17	25
Society and Culture	2	1,091	3,786	4,877	582	2,465	3,047

Table 22

Course enrolments in Year 11 and Year 12 subjects in NSW government schools, 2020 (continued)

Course name	Units	Year 11			Year 12		
		Boys	Girls	Total	Boys	Girls	Total
Society and Culture Life Skills	2	65	29	94	22	13	35
Software Design and Development	2	1,586	234	1,820	960	137	1,097
Spanish Beginners	2	88	210	298	67	171	238
Spanish Continuers	2	23	50	73	20	50	70
Spanish Extension	1				5	14	19
Studies of Religion I	1	240	220	460	89	150	239
Studies of Religion I Life Skills	1		3	3		3	3
Studies of Religion II	2	185	583	768	153	483	636
Studies of Religion II Life Skills	2	3	7	10	1	9	10
Tamil Continuers	2	7	4	11	4	6	10
Technology Life Skills	2	299	127	426	249	105	354
Textiles and Design	2	60	925	985	32	782	814
Textiles and Design Life Skills	2	3	12	15	1	19	20
Tourism, Travel and Events	2					1	1
Turkish Continuers	2	9	17	26	5	11	16
Vietnamese Continuers	2	100	155	255	65	116	181
Visual Arts	2	1,837	4,911	6,748	1,236	3,740	4,976
Visual Arts Life Skills	2	324	219	543	257	162	419
Work and the Community Life Skills	2	825	370	1,195	596	284	880

Source: Department of Education, data derived from NSW Education Standards Authority (NESA) data, January 2021.

Notes:

- Based on school of tuition, NESA developed courses only, and includes subjects studied through distance education, the NSW School of Languages and Aurora College.

Progress measures

Table 23

Apparent retention (%) in NSW government schools, 2010-2020

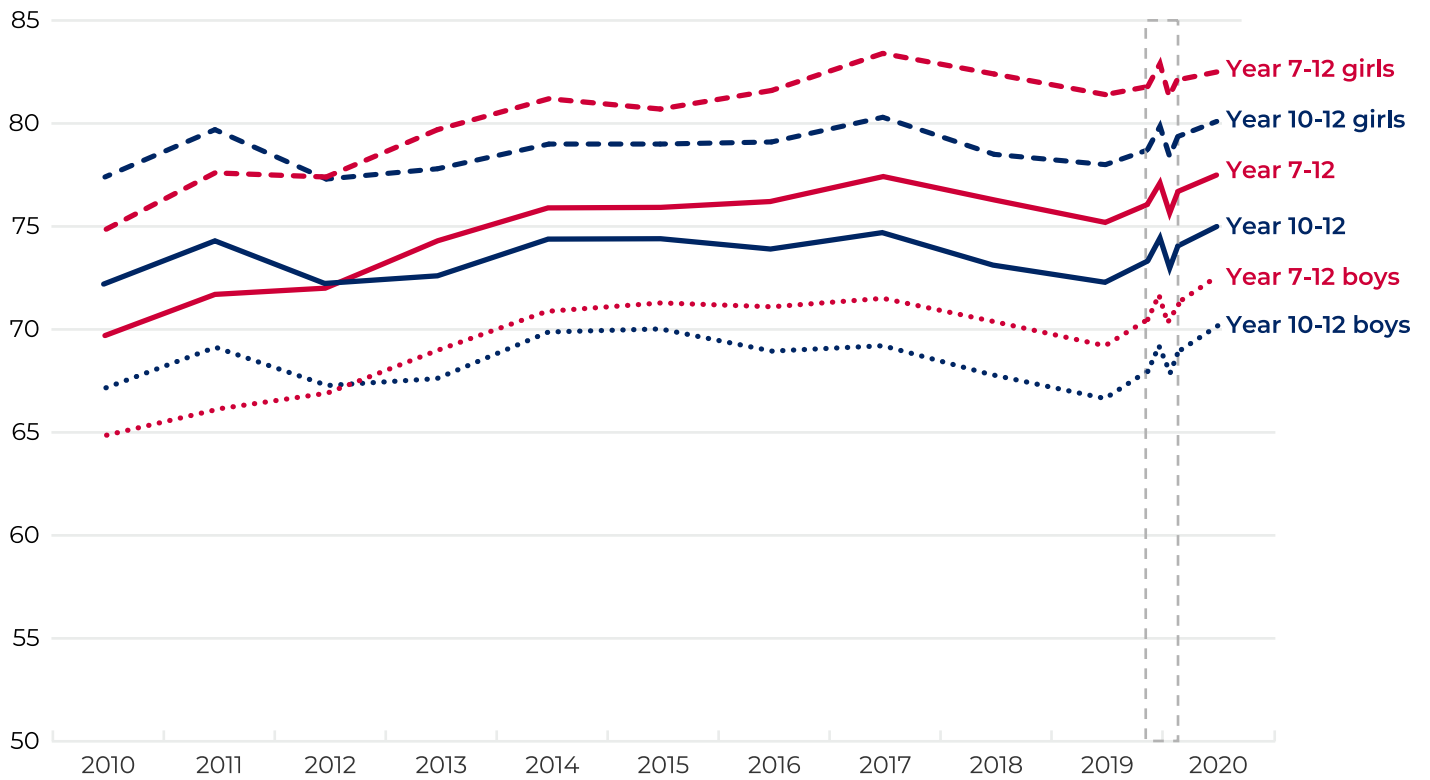
Year	Years 7-10			Years 7-11			Years 7-12			Years 10-11			Years 10-12		
	Boys	Girls	Total	Boys	Girls	Total	Boys	Girls	Total	Boys	Girls	Total	Boys	Girls	Total
2010	99.4	100.2	99.8	81.1	89.7	85.3	64.9	74.8	69.7	84.8	92.2	88.4	67.1	77.4	72.2
2011	102.2	102.4	102.3	83.3	91.3	87.2	66.1	77.6	71.7	83.7	91.1	87.3	69.1	79.7	74.3
2012	101.4	102.8	102.1	86.1	93.3	89.6	66.9	77.4	72.0	84.3	91.0	87.6	67.3	77.3	72.2
2013	102.0	102.1	102.0	88.1	94.6	91.3	69.0	79.7	74.3	86.9	92.0	89.4	67.6	77.8	72.6
2014	103.0	103.2	103.1	89.3	94.9	92.1	70.9	81.2	75.9	87.6	92.9	90.2	69.9	79.0	74.4
2015	103.3	103.9	103.6	90.2	95.9	93.0	71.3	80.7	75.9	87.6	93.0	90.2	70.0	79.0	74.4
2016	103.7	105.0	104.3	89.4	96.9	93.1	71.1	81.6	76.2	86.5	93.3	89.9	69.0	79.1	73.9
2017	103.7	104.4	104.0	88.8	96.0	92.4	71.5	83.4	77.4	85.6	91.5	88.5	69.2	80.3	74.7
2018	103.4	103.1	103.2	86.7	95.2	90.9	70.4	82.4	76.3	83.6	91.2	87.3	67.8	78.5	73.1
2019	103.0	102.7	102.8	86.2	93.9	90.0	69.2	81.4	75.2	83.4	91.1	87.2	66.7	78.0	72.3
2020	107.7	104.4	106.1	89.3	95.0	92.0	72.6	82.5	77.5	86.7	92.5	89.5	70.2	80.1	75.0

Notes:

- Apparent retention is based on full-time equivalent (FTE) units, including full-time and part-time students. Students enrolled in distance education classes are included with their appropriate grade levels.
- Legislation raising the minimum school leaving age from 15 to 17 came into effect in January 2010. The Year 12 cohort in 2012 was the first group of students who were required to complete Year 10. This meant that the Year 10 enrolment figure was higher than in previous years, resulting in a relative decline in Year 10 to Year 12 apparent retention in 2012, despite the Year 7 to Year 12 apparent retention rate increasing slightly.
- From 2020, students in mainstream support classes (previously excluded from this table) are reported by their underlying grade of enrolment. This has resulted in an increase in apparent retention rates across all years. As a result, data from 2020 is not directly comparable to previous years.
- Refer to explanatory note 10.

Figure 6

Apparent retention (%) in NSW government schools, 2010-2020



Notes:

- From 2020, students in mainstream support classes (previously excluded from this data) are reported by their underlying grade of enrolment. This has resulted in an increase in apparent retention rates across all years. As a result, data from 2020 is not directly comparable to previous years.

Table 24**NSW government school HSC completions, 2016-2020**

Number of Students	2016	2017	2018	2019	2020
Students who completed one or more HSC courses (all students)	44,029	44,320	42,887	41,415	42,106
Students who completed one or more HSC courses (Aboriginal students)	2,100	2,108	2,054	2,123	2,192
HSC Award (all students)	38,589	38,775	38,100	36,886	36,910
HSC Award (Aboriginal students)	1,711	1,700	1,671	1,804	1,805

Source: Department of Education, data derived from NSW Education Standards Authority (NESA) and National Schools Statistics Collection (NSSC) data, January 2021.

Notes:

- Identification of Aboriginal students in this table is based on Aboriginal status reported in the National Schools Statistics Collection (NSSC) conducted each August, rather than the NESA data.
- Students who have completed one or more HSC courses but have not yet been awarded the HSC receive a Record of Achievement.
- HSC pathways offer a flexible program for students to complete the HSC over a period of up to five years. The pathways provisions include accumulating courses, repeating courses, acceleration, recognition of prior learning and combining study with part-time traineeships or apprenticeships. These students are included in the count of students who have completed one or more HSC courses.
- Bradfield college included.
- Refer to explanatory note 13.

Explanatory notes

Each year the education departments of all states and territories in Australia, and the Australian Government Department of Education and Training collect data on government and non-government schools, and their students. Since 1994 the date for collection has been the first Friday in August, as close as possible with the national Census of Population and Housing conducted every five years. The 2020 census of NSW Government schools was conducted on August 7. Initial results were published in CESE Bulletin, Inbrief Mid-year Census 2020.

This bulletin consolidates data from the department's Term 1 and mid-year data collections. It also reports on non-government data collected by the Australian Government Department of Education and Training.

Government and non-government school data form part of the National Schools Statistics Collection which is reported annually by the Australian Bureau of Statistics in Schools Australia (Catalogue No. 4221.0).

1. Primary and secondary schools

Primary schools enrol students in Kindergarten to Year 6; secondary schools generally enrol students in Years 7 to 12, although some secondary schools only enrol students in the senior years, that is Years 11 to 12 or the junior years, that is, Years 7 to 10.

2. Central/Community schools

Central/community schools have primary and secondary departments and may be established where there is an enrolment in secondary classes of 20 or more. Enrolments in primary departments and secondary departments are included with the appropriate student data.

From 2016, the department has provided school education services on Norfolk Island under an agreement with the Australian government. Norfolk Island Central School was included in NSW data for the first time in 2016. It has not been designated an SA4 group, so is included in regional ('very remote') and NSW totals, but not included in individual SA4 group data unless specifically stated.

3. Schools for Specific Purposes

Schools for specific purposes (SSPs) or Special Schools support students with intellectual disability, mental health disorder or autism spectrum disorder, students with physical disability or sensory impairment, and students with learning difficulties or behaviour disorder. Students in SSPs are usually counted by type of class rather than by disability type as many students have comorbid disability. Multi-categorical classes include students with one or more than one disability with the focus being on placing students together who have similar needs. Some SSPs have no permanent enrolments because the children temporarily attending them are enrolled and counted in their own schools. These are mainly hospital schools.

4. Government Preschools

From 2020, School of the Air preschool is reported separately from Dubbo School of Distance Education preschool.

5. Support classes in mainstream schools

The majority of support classes are established in mainstream primary, secondary and central schools. Specialist support classes cater for students with moderate to high learning and support needs including students with intellectual disability, mental health disorder, autism spectrum disorder, physical disability, sensory impairment and behaviour disorders. Many students have comorbid disability. Multi-categorical classes include students with one or more than one disability with the focus being on placing students together who have similar needs. Students enrolled in support classes are reported according to the type of class rather than by their year of schooling. Support class enrolments are included with other primary and secondary enrolments in some tables. From 2020, in some tables students in support classes in mainstream schools are reported by their underlying grade of enrolment. Please refer to 'Notes' section under each table.

6. Distance education

Distance education centres (DECs) provide schooling for students who are isolated or whose special circumstances prevent them from attending a regular school. They operate either as separate schools or as units within regular primary, central and high schools. Students enrolled in DECs are counted in their corresponding years of schooling.

In conjunction with the NSW School of Languages and Aurora College, DECs also provide individual subject enrolment, widening study opportunities for secondary students. These students are enrolled and counted at their home schools.

7. Part-time students

Students in Years 11 or 12 can enrol to study as a part-time student or a full-time student. For the annual census, a part-time student is enrolled in less than 10 units, regardless of where those units are studied. All Kindergarten to Year 10 students are considered to be full-time.

8. Full-time equivalent enrolments

Student enrolments are generally reported in full-time equivalent (FTE) units. The FTE for students studying less than 10 units, the minimum workload, is determined by the formula: $0.1 \times$ the number of units studied and represented as a proportion of the full-time enrolment of 1.0 FTE.

9. Aboriginal and Torres Strait Islander students

Students are counted as Aboriginal or Torres Strait Islanders if they are identified and accepted as such by the community with which they are associated, and they identify themselves on the school enrolment form.

10. Apparent Retention Rates (ARR)

Retention rates are 'apparent' as they do not track individual students through their final years of secondary schooling. What they measure is the ratio of the total number of students in a designated year (for example, Year 12 in 2020) divided by the total number of students in a previous year (for example, Year 7 in 2015). This would be the Year 7 to 12 apparent retention rate in 2020.

Care should be taken in the interpretation of apparent retention rates, which can exceed 100%, because the method of calculation does not take into account a range of factors such as migration, interstate movements of students, transfers to and from non-government schools, part-time schooling, students repeating a year of schooling, or students pursuing other education and training pathways.

11. Language Background other than English (LBOTE)

Students are counted as being of language background other than English if in their home a language other than English is spoken by the students, parents or guardians.

12. Class size

The audit of class sizes in NSW government primary schools is undertaken in March each year. The audit does not include schools for specific purposes, distance education centres or intensive English centres. The number of classes, average class sizes and enrolment numbers exclude support classes in primary and central schools.

13. Higher School Certificate (HSC)

The HSC is the highest educational award in secondary education in NSW. It is awarded to students who have satisfactorily completed Years 11 and 12 at secondary school. To be eligible, students must meet HSC course requirements and sit for the statewide HSC examinations.

14. Colleges

The secondary schools in some areas have been transformed into colleges in order to provide broader opportunities and better facilities for students. A college is the amalgamation of all the secondary schools within a specific area. Each former secondary school has become a campus of their college. A senior college campus is generally for students in Years 11 and 12 but in some cases, may include Year 10 students. The colleges have formed cooperative ventures with TAFE Institutes and universities. They offer a wide range of options from specialist senior HSC courses to school re-entry courses.

15. Family Occupation and Education Index

The Family Occupation and Education Index (FOEI) is a school level index of educational disadvantage related to socioeconomic background. It has been selected as the basis of the equity loading for socio-economic background in the department's Resource Allocation Model.

FOEI is constructed from parental education and occupation information collected from student enrolment forms and recorded in the Enrolment Registration Number system. FOEI uses a statistical regression model to produce a weighted combination of school-level parental education and occupation variables based on the extent to which each variable uniquely predicts average school performance. Further information on the methodology used to construct FOEI can be found in relevant publications released at www.cese.nsw.gov.au.

Students in FOEI quarter 1 group are the top 25% of students in NSW government schools who have the highest level of educational disadvantage related to socio-economic background.

16. Statistical area 4 groupings

Previous publications of the Statistical Bulletin compared enrolments in DEC regions. From 2014 these geographies have been discontinued and replaced with a geographical structure based on the new ABS Australian Statistical Geography Standard (ASGS). Groups of ASGS Statistical Area 4 (SA4) boundaries in NSW have been combined into 11 groups for reporting and publication of department data. MCEECDYA refers to the Ministerial Council for Education, Early Childhood Development and Youth Affairs.

Name of SA4 groupings	SA4 Name
Sydney-North	Sydney – North Sydney and Hornsby Sydney – Northern Beaches Sydney – Ryde
Sydney-Inner	Sydney – City and Inner South Sydney – Eastern Suburbs Sydney – Inner West
Sydney-South	Sydney – Inner South West Sydney – Sutherland
Sydney-South West	Sydney – Outer South West Sydney – South West
Sydney-West	Sydney – Blacktown Sydney – Parramatta
Sydney-North West	Sydney – Baulkham Hills and Hawkesbury Sydney – Outer West and Blue Mountains
North East NSW	Coffs Harbour – Grafton Mid North Coast Richmond – Tweed
North West NSW	Hunter Valley exc Newcastle Far West and Orana New England and North West
South West NSW	Central West Murray Riverina
South East NSW	Capital Region Illawarra Southern Highlands and Shoalhaven
Central Coast, Newcastle	Central Coast Newcastle and Lake Macquarie

Statistical Area 4 groups



Author: **CESE**

Centre for Education Statistics and Evaluation

GPO Box 33, Sydney NSW 2001, Australia

Visit our website to subscribe to the CESE newsletter

☎ 02 7814 1527

🌐 education.nsw.gov.au/cese

✉ info@cese.nsw.gov.au

📄 yammer.com/det.nsw.edu.au

This work is licensed under the [Creative Commons Attribution 4.0 International License](https://creativecommons.org/licenses/by/4.0/)

Please cite this publication as:

Centre for Education Statistics and Evaluation (2021), *Schools and students: 2020 Statistical Bulletin*, NSW Department of Education, education.nsw.gov.au/cese