



Education &
Communities
Office of Education

CESE STATISTICAL BULLETIN ISSUE 3

Schools and Students in NSW: 2013 Statistical Bulletin

Centre for Education Statistics and Evaluation



2013 Statistical Bulletin Summary

NSW Government

Full-time equivalent (FTE) enrolments

Primary enrolments	446,848.0
Secondary enrolments	303,433.6
SSP enrolments	5,064.0
Total enrolments	755,345.6

Aboriginal and Torres Strait Islander students

Total Aboriginal & Torres Strait Islander enrolments	49,308.4
Per cent Aboriginal & Torres Strait Islander enrolments	6.5%

Part-time students

Number of part-time students	2,292
FTE enrolments	1,351.6

Preschool students

Number of preschool students	4,433
FTE enrolments	2,371.1

Students with language background other than English (LBOTE)

LBOTE enrolments	235,106
LBOTE enrolments as per cent of total enrolments	30.9%

NSW Non-Government

Full-time equivalent (FTE) enrolments

Primary enrolments	198,397.0
Secondary enrolments	200,416.3
Total enrolments	398,813.3

Attendance rate (Semester 1)

Primary (Years 1 - 6)	94.5
Secondary (Years 7 - 10)	90.1
Years 1 - 10 (Including support)	92.9

Average primary class size

Kindergarten to Year 6	24.0
------------------------	------

HSC Year 12 student completions

HSC awards	38,908
------------	--------

NSW government schools

Primary schools	1,600
Separate infants schools	17
Central/community schools	67
Secondary schools	398
Schools for specific purposes (SSP)	113
Environmental education centres (EEC)	23
Total government schools	2,218

Preschools attached to primary/infants schools	99
Separate preschools	1
Total preschools	100

NSW non-government schools

Primary schools	489
Secondary schools	145
Primary/secondary schools	238
Special schools	45
Total non-government schools	917

Data Sources

The 2013 Statistical Bulletin reports NSW government schools data from:

- The census of students undertaken on Friday, 2 August 2013.
- The census of students of language background other than English undertaken on Friday, 8 March 2013.
- The K-6 Class Size Audit undertaken on Friday, 15 March 2013.
- The K-6 languages programs: includes languages programs (in school hours) collection undertaken in May 2013.
- The Years 7-9 language participation collection undertaken in August 2013.
- The attendance collection undertaken in June 2013 for Semester 1.

The bulletin also includes non-government schools data which were collected by the Australian Government Department of Education on Friday, 2 August 2013.

Further Reference

Additional information about schools and students in NSW is available from the Centre for Education Statistics and Evaluation's (CESE) other statistical publications:

- CESE Bulletin Issue 5 - Language Diversity in NSW, 2013
- CESE Bulletin Issue 7 - Inbrief Mid-year Census 2013
- CESE Bulletin Issue 6 - Student Attendance 2013 (Semester 1)

The publications can be obtained from CESE's website:

<http://www.cese.nsw.gov.au/publications>

Table of Contents

List of Tables

Schools

Table 1 NSW government schools by classification, 2003-2013	5
Table 2 NSW government schools by type and ABS statistical area, mid-year 2013	7
Table 3 NSW government schools by program and ABS statistical area, mid-year 2013	8
Table 4 List of college arrangements, mid-year 2013	9
Table 5 Secondary education schools by selective, specialist and coeducational status, mid-year 2013	9

Classes

Table 6 Average primary class sizes by year, 1997 and 2003-2013	10
---	----

Students

Table 7 Enrolments (FTE) in NSW government schools, 1970, 1980, 1990, 1993-2013	11
Table 8 Age-grade distribution of students in NSW government schools, mid-year 2013, primary students by age and year of schooling (excluding support students)	12
Table 9 Age-grade distribution of students in NSW government schools, mid-year 2013, full-time secondary students by age and year of schooling (excluding support students)	12
Table 10 Age-grade distribution of students in NSW government schools, mid-year 2013 part-time secondary students by age and year of schooling	14
Table 11 Enrolments in support classes and schools for specific purposes (SSPs) by category, mid-year 2013	14
Table 12 Age-grade distribution of students in NSW government schools, mid-year 2013 students in schools for specific purposes by age and category	16
Table 13 Age distribution of students in NSW government preschools and early intervention programs, mid-year 2013	17
Table 14 Enrolments (FTE) in distance education by year of schooling, mid-year 2013	17
Table 15 Enrolments (FTE) of Aboriginal students by ABS statistical area and grade groups in NSW government schools, mid-year 2013	18
Table 16 Enrolment of students of language background other than English (LBOTE) in NSW government schools, March 2013 by ABS statistical area and grade groups	19
Table 17 Enrolments (FTE) in NSW government schools by program and ABS statistical area, mid-year 2013	20

Study Patterns

Table 18 Primary students in NSW government schools studying a language other than English by year of schooling and language, May 2013	21
Table 19 Language participation Year 7-9 by gender and year of schooling, August 2013	22
Table 20 Course enrolments in Year 10 subjects in NSW government schools, 2013	23
Table 21 Course enrolments in Year 11 and Year 12 subjects in NSW government schools, 2013	26

Progress measures

Table 22 Apparent retention in NSW government schools, 2003-2013	30
Table 23 NSW government school HSC completions, Year 12 students only, 2003-2013	31
Table 24 Schools attendance rates by Aboriginality and year level, 2013	32

List of Figures

Figure 1 NSW government schools by classification, 2003-2013	6
Figure 2 Primary and secondary enrolments (FTE) in NSW government schools, 2003-2013	11
Figure 3 Enrolments in NSW government schools by year of schooling and gender, mid-year 2013	13
Figure 4 Enrolments in NSW government schools by age and gender, mid-year 2013	13
Figure 5 Enrolments in support classes in ordinary schools and SSPs by category, mid-year 2013	15
Figure 6 Apparent retention (%) in NSW government schools, 2003-2013	30
Figure 7 Number of HSC awards (all students) in NSW government schools, 2003-2013	31

Explanatory Notes 33

Geographical Map of NSW ABS Statistical Area 4 35

Table 1

NSW government schools by classification, 2003-2013

Classification	2003	2004	2005	2006	2007	2008	2009	2010	2011	2012	2013
Primary and infants schools											
Class 1	75	74	71	59	59	58	58	56	62	67	74
Class 2	271	273	266	261	261	262	262	262	267	266	262
Class 3	357	354	358	342	342	343	343	324	308	313	307
Class 4	346	351	348	377	375	381	383	391	393	377	378
Class 5	449	447	455	443	433	424	423	425	419	425	412
Class 6	134	136	137	145	155	156	147	154	164	157	167
Separate Infants	17	17	17	17	17	17	17	17	17	17	17
Total	1,649	1,652	1,652	1,644	1,642	1,641	1,633	1,629	1,630	1,622	1,617
Central and community schools											
Class 1	4	3	3	3	4	4	4	4	4	4	4
Class 2	10	11	9	10	9	9	9	7	6	7	6
Class 3	23	22	23	23	24	22	22	21	20	19	21
Class 4	23	24	25	25	24	26	26	29	31	31	30
Class 8	3	3	3	4	4	4	4	4	4	4	4
Class 9	3	3	3	2	2	2	2	2	2	2	2
Total	66	66	66	67	67	67	67	67	67	67	67
Secondary schools											
Class 8	138	139	142	141	134	132	132	139	138	140	140
Class 9	256	256	255	256	263	265	266	259	260	258	258
Total	394	395	397	397	397	397	398	398	398	398	398
Other schools											
Schools for Specific Purposes	106	108	108	108	114	114	113	113	113	113	113
Environmental Education Centres	23	23	23	23	23	23	23	23	23	23	23
Total Schools	2,238	2,244	2,246	2,239	2,243	2,242	2,234	2,230	2,231	2,223	2,218

Classifications:

Primary and infants schools:
 Class 1 - More than 700 enrolments
 Class 2 - 451 to 700 enrolments
 Class 3 - 301 to 450 enrolments
 Class 4 - 160 to 300 enrolments
 Class 5 - 26 to 159 enrolments
 Class 6 - Less than 26 enrolments

Central schools:
 Class 1 - More than 450 enrolments
 Class 2 - 301 to 450 enrolments
 Class 3 - 160 to 300 enrolments
 Class 4 - 26 to 159 enrolments

Community schools:
 Class 8 - More than 900 enrolments
 Class 9 - 900 or less enrolments

Secondary schools:
 Class 8 - More than 900 enrolments
 Class 9 - 900 or less enrolments

Notes:

- The classifications used in the table are not based on the 2013 actual enrolments collected through the mid-year census. The classifications are based on the staffing entitlement classifications reviewed periodically by the Classification Review Committee.
- See explanatory notes 1, 2 and 3.

Figure 1

NSW government schools by classification, 2003-2013

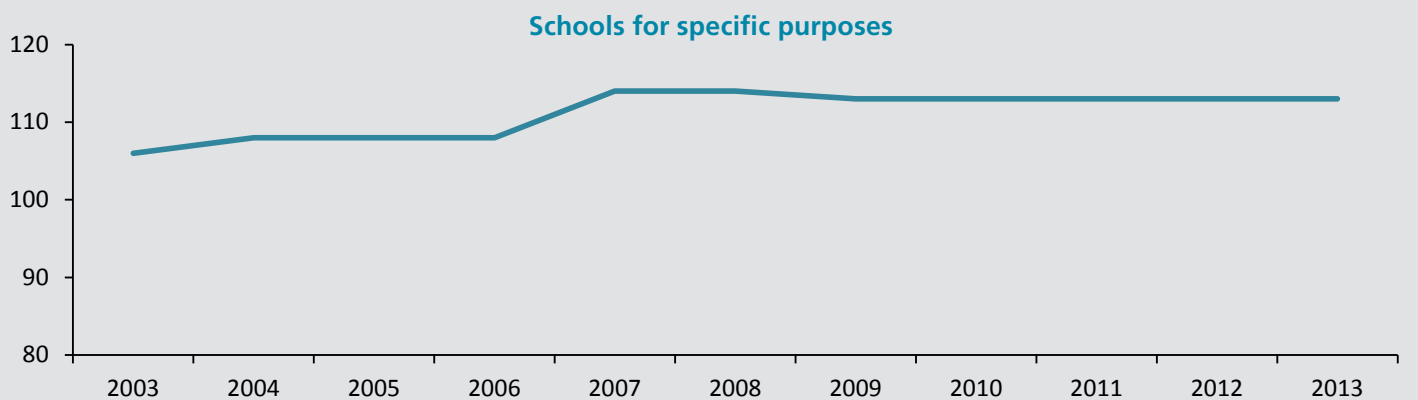
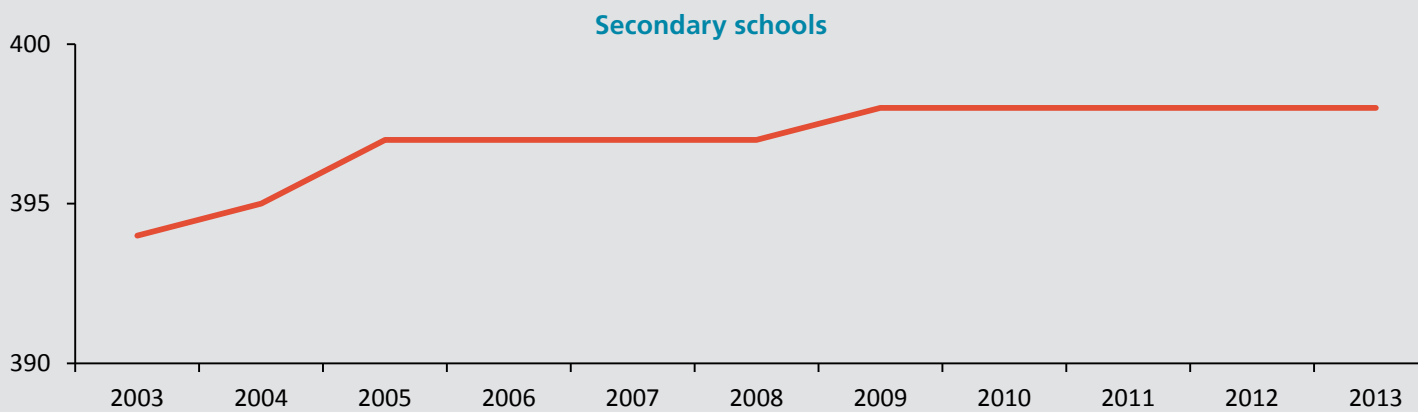
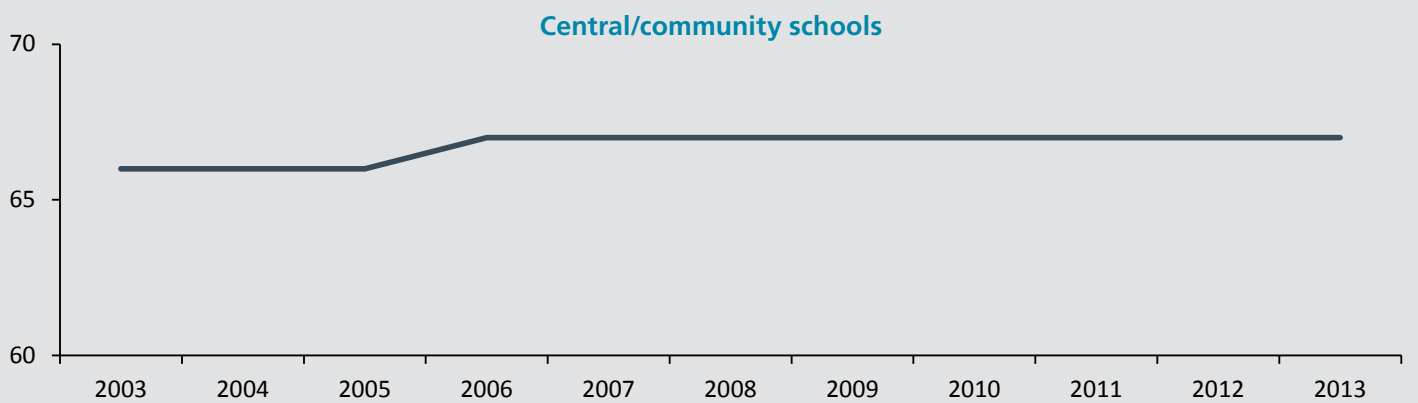
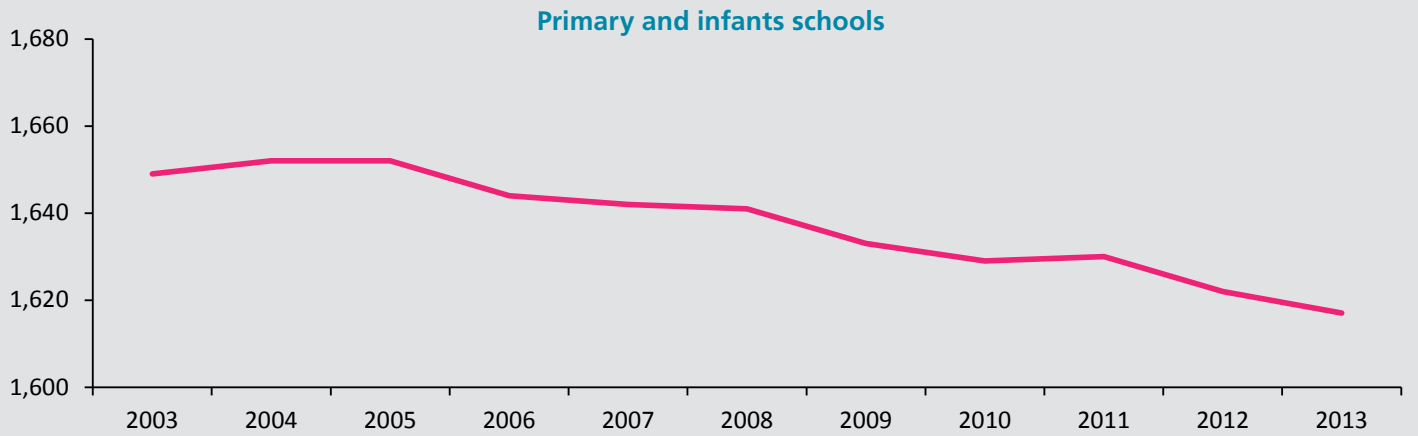


Table 2

NSW government schools by type and ABS statistical area, mid-year 2013

Statistical Area 4	Primary	Central / Community	Secondary	SSP	EEC	Total
Syd - Baulkham Hills and Hawkesbury	43		10	1	2	56
Syd - Blacktown	54		17	7		78
Syd - City and Inner South	32	1	9	3	1	46
Syd - Eastern Suburbs	23		8	3		34
Syd - Inner South West	74		26	10		110
Syd - Inner West	33		11	4		48
Syd - North Sydney and Hornsby	45		14	5	1	65
Syd - Northern Beaches	31		11	6		48
Syd - Outer South West	54		17	8	2	81
Syd - Outer West and Blue Mountains	65		18	3	1	87
Syd - Parramatta	58		18	9		85
Syd - Ryde	22		7	2	1	32
Syd - South West	59		21	4	1	85
Syd - Sutherland	43	1	12	4	2	62
Sydney Total	636	2	199	69	11	917
Capital Region	82	3	15	1	1	102
Central Coast	55	1	17	5	1	79
Central West	87	11	17	3	1	119
Coffs Harbour - Grafton	49		10	2	1	62
Far West and Orana	45	16	14	2	2	79
Hunter Valley exc Newcastle	83	1	13	1		98
Illawarra	67		17	3	1	88
Mid North Coast	74	3	15			92
Murray	54	4	10	2		70
New England and North West	91	11	17	4	1	124
Newcastle and Lake Macquarie	90	1	19	9	2	121
Richmond - Tweed	95	5	14	2	1	117
Riverina	70	9	14	6	1	100
Southern Highlands and Shoalhaven	39		7	4		50
Rest of NSW	981	65	199	44	12	1,301
Total	1,617	67	398	113	23	2,218

Notes:

- Lucas Heights Community School, Hunter School of Performing Arts, Southern Cross School, Wadalba Community School, Alexandria Park Community School and Evans River Community School are included with central/community schools
- See explanatory notes 1, 2, 3 and 17.

Table 3

NSW government schools by program and ABS statistical area, mid-year 2013

Priority Schools Funding Program

Statistical Area 4	Primary	Central/ Community	Secondary	SSP	Total
Syd - Baulkham Hills and Hawkesbury	2		1		3
Syd - Blacktown	24		6	6	36
Syd - City and Inner South	2		1	1	4
Syd - Eastern Suburbs	1		1		2
Syd - Inner South West	13		10	1	24
Syd - Inner West			1		1
Syd - North Sydney and Hornsby					
Syd - Northern Beaches					
Syd - Outer South West	18		6	4	28
Syd - Outer West and Blue Mountains	11		3	1	15
Syd - Parramatta	17		7	3	27
Syd - Ryde					
Syd - South West	30		11	2	43
Syd - Sutherland					
Capital Region	17		1		18
Central Coast	12		1	1	14
Central West	32	3	4	2	41
Coffs Harbour - Grafton	19		1	1	21
Far West and Orana	24	12	9		45
Hunter Valley exc Newcastle	31	1	4	1	37
Illawarra	18		5		23
Mid North Coast	31	1	3		35
Murray	22	2	1	2	27
New England and North West	38	6	7	3	54
Newcastle and Lake Macquarie	19		2	2	23
Richmond - Tweed	23	2	1	1	27
Riverina	26		4	2	32
Southern Highlands and Shoalhaven	4		1	1	6
State Total	434	27	91	34	586

Country Area Program

Statistical Area 4	Primary	Central/ Community	Secondary	SSP	Total
Capital Region	33	1	4		38
Central Coast					
Central West	18	7	2		27
Coffs Harbour - Grafton					
Far West and Orana	23	13	6		42
Hunter Valley exc Newcastle	1				1
Illawarra					
Mid North Coast	2	1			3
Murray	29	4	5		38
New England and North West	38	6	5	1	50
Newcastle and Lake Macquarie					
Richmond - Tweed	1	1			2
Riverina	10	3	1		14
Southern Highlands and Shoalhaven					
State Total	155	36	23	1	215

Notes:

- Programs are not mutually exclusive. It is possible for schools to be involved in both programs.
- See explanatory notes 1, 2, 3, 14, 15 and 17.

Table 4**List of college arrangements, mid-year 2013**

College	Senior Campus	Other Campuses			
Brisbane Water Secondary College	Woy Woy Campus	Umina Campus			
Callaghan College	Jesmond Campus	Wallsend Campus	Waratah Technology Campus		
Chifley College	Senior Campus	Bidwill Campus	Dunheved Campus	Mount Druitt Campus	Shalvey Campus
Denison College of Secondary Education*		Bathurst High Campus	Kelso High Campus		
Dubbo College	Senior Campus	Delroy Campus	South Campus		
Georges River College	Oatley Senior Campus	Hurstville Boys Campus	Peakhurst Campus	Penshurst Girls Campus	
Great Lakes College	Senior Campus	Forster Campus	Tuncurry Campus		
Moree Secondary College	Albert St Campus	Carol Ave Campus			
Nirimba College	Wyndham College	Quakers Hill High School	Riverstone High School	Seven Hills High School	
Northern Beaches College	Freshwater Senior Campus	Balgowlah Boys Campus	Cromer Campus	Mackellar Girls Campus	Manly Campus
Sydney Secondary College	Blackwattle Bay Campus	Balmain Campus	Leichhardt Campus		
Tuggerah Lakes College	The Entrance Campus	Berkeley Vale Campus	Tumbi Umbi Campus		

Notes:

- *Denison College of Secondary Education does not have a senior campus.
- See explanatory note 16.

Table 5**Secondary education schools by selective, specialist and coeducational status, mid-year 2013**

Selective Status	Specialty Name	Coeducational	Boys	Girls	Total
Fully Selective	Agricultural	3	1		4
	Comprehensive	9	4	4	17
Partially Selective	Comprehensive	17	1	2	20
	Junior College	2			2
	Language	2			2
	Senior College	1			1
Total Selective		34	6	6	46
Non-Selective	Comprehensive	325	12	15	352
	Creative Arts	1			1
	Intensive English	1			1
	Junior College	16	1	1	18
	Language	2		1	3
	Marine Technology	1			1
	Performing Arts	8			8
	Rural Technology	1			1
	Senior College	15			15
	Sports	7			7
	Technology	8	2	1	11
	Visual Arts	1			1
	Total Non-Selective		386	15	18
Total Secondary Schools		420	21	24	465

Notes:

- Includes secondary schools and central/community schools. The Conservatorium High School is included with performing arts schools.
- See explanatory note 1.

Table 6

Average primary class sizes by year, 1997 and 2003-2013

Year	1997	2003	2004	2005	2006	2007	2008	2009	2010	2011	2012	2013
Kindergarten	24.1	22.9	22.1	19.7	19.3	19.2	19.2	19.3	19.2	19.2	19.3	19.4
Year 1	25.5	24.5	24.6	23.6	21.3	21.1	21.2	21.3	21.2	21.2	21.2	21.3
Year 2	26.2	25.3	25.4	25.1	24.1	22.6	22.5	22.6	22.7	22.6	22.7	22.7
Year 3	26.6	26.2	26.4	26.1	25.9	25.7	25.7	25.8	25.6	25.7	25.5	25.6
Year 4	26.8	26.5	26.6	26.4	26.4	26.2	26.1	26.2	26.2	26.1	25.9	25.9
Year 5	26.8	26.8	26.8	26.6	26.6	26.5	26.5	26.5	26.4	26.4	26.2	26.3
Year 6	26.8	26.8	26.8	26.7	26.6	26.5	26.5	26.5	26.4	26.3	26.2	26.1
Kindergarten - Year 6	26.9	26.3	26.2	25.3	24.6	24.3	24.2	24.3	24.2	24.0	24.0	24.0

Notes:

- Class size audits were not conducted in 1998, 1999, 2000 and 2001. Data for 2002 were published in **CESE Statistical Bulletin 2012**.
- The average class size for each year level is calculated from regular and multi-age classes that contain a student from that year level.
- Students attending schools for specific purposes (SSPs), students in support classes in regular schools and distance education students are excluded from average class size calculations.
- See explanatory note 12.



Table 7

Enrolments (FTE) in NSW government schools, 1970, 1980, 1990, 1993-2013

Year	Primary	Secondary	SSP	Total
1970	503,547	257,874		761,421
1980	515,769	283,352		799,121
1990	434,814	304,006	4,366	743,186
1993	445,238	308,909.2	3,901	758,048.2
1994	445,599	306,716.6	3,798	756,113.6
1995	446,722	305,395.6	3,789	755,906.6
1996	450,465	306,823.3	3,749	761,037.3
1997	451,560	308,922.7	3,690	764,172.7
1998	452,565	309,136.7	3,673	765,374.7
1999	453,454	308,116.1	3,762	765,332.1
2000	454,363	303,681.1	3,792	761,836.1
2001	451,096	301,771.4	3,873	756,740.4
2002	447,897	302,988.0	3,915	754,800.0
2003	443,213	304,034.0	3,938	751,185.0
2004	438,677	302,849.6	3,981	745,507.6
2005	434,876	302,578.3	4,124	741,578.3
2006	432,660	303,622.0	4,133	740,415.0
2007	429,900	304,457.7	4,278	738,635.7
2008	428,331	303,055.7	4,392	735,778.7
2009	429,000	303,180.7	4,466	736,646.7
2010	430,177	307,291.2	4,673	742,141.2
2011	433,873	306,893.2	4,774	745,540.2
2012	438,681	304,632.1	4,921	748,234.1
2013	446,848	303,433.6	5,064	755,345.6

Notes:

- Since 1993 some students have enrolled part-time and all enrolments are reported in full-time equivalent units (FTEs) and include full-time and part-time students.
- See explanatory notes 1, 3, 6, and 7.

Figure 2

Primary and secondary enrolments (FTE) in NSW government schools, 2003-2013

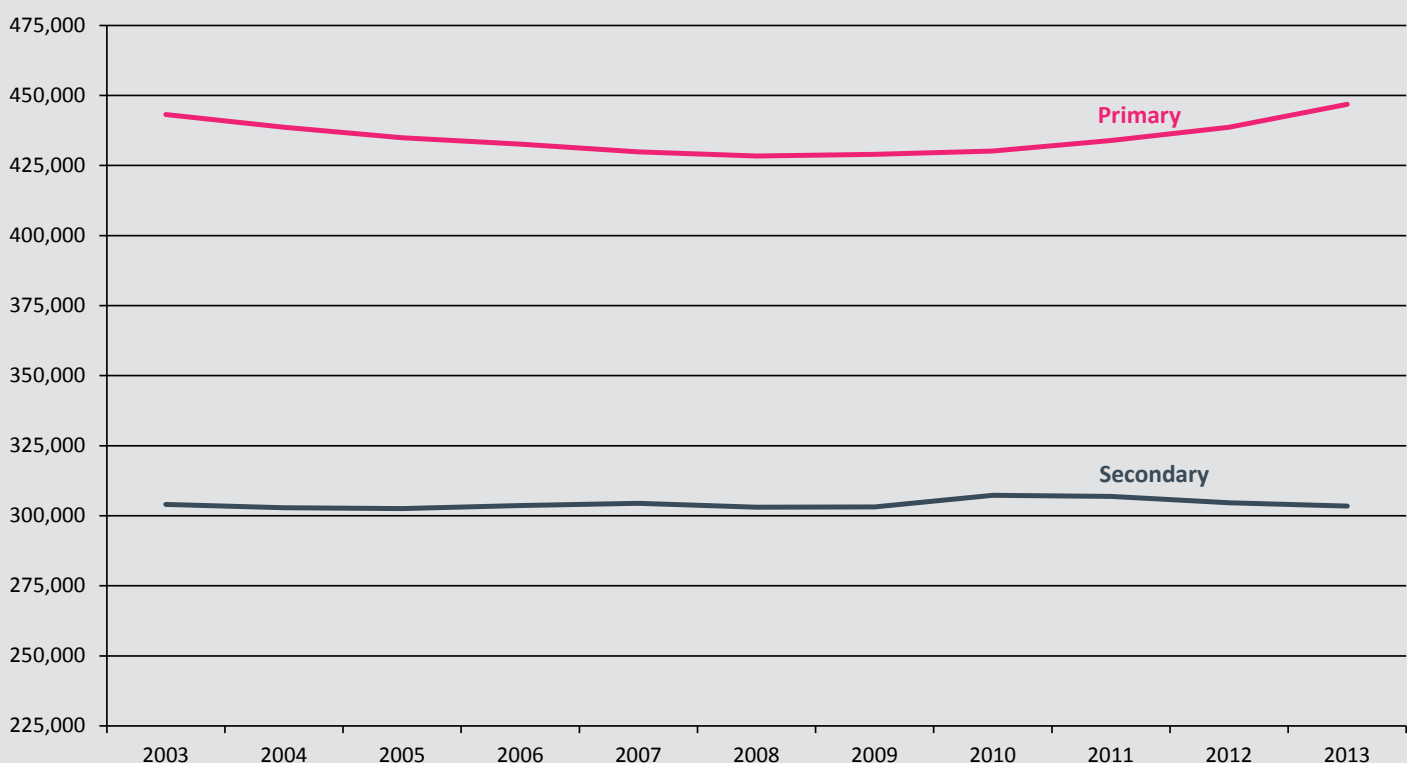


Table 8

Age-grade distribution of students in NSW government schools, mid-year 2013, primary students by age and year of schooling (excluding support students)

Age Yrs:Mths	Kindergarten		Year 1		Year 2		Year 3		Year 4		Year 5		Year 6		Total		Primary Total
	Boys	Girls	Boys	Girls	Boys	Girls	Boys	Girls	Boys	Girls	Boys	Girls	Boys	Girls	Boys	Girls	
Under 5	666	911													666	911	1,577
5-5:11	26,704	27,344	555	821											27,259	28,165	55,424
6-6:11	8,349	5,659	25,732	26,523	445	714									34,526	32,896	67,422
7-7:11	19	18	8,169	5,608	24,724	25,143	434	656	1						33,346	31,426	64,772
8-8:11			29	12	8,108	5,481	23,307	23,899	466	589	1				31,911	29,981	61,892
9-9:11				1	32	19	7,595	5,313	22,508	23,283	411	600	1		30,547	29,216	59,763
10-10:11							42	15	7,958	5,513	21,739	22,866	401	571	30,140	28,965	59,105
11-11:11							2		53	27	7,761	5,357	21,206	22,546	29,022	27,930	56,952
12-12:11											50	42	7,997	5,452	8,047	5,494	13,541
13-13:11											1		81	38	82	38	120
14-14:11														1		1	1
Subtotal	35,738	33,932	34,485	32,965	33,309	31,357	31,380	29,883	30,985	29,413	29,963	28,865	29,686	28,608	225,546	215,023	440,569
Total	69,670		67,450		64,666		61,263		60,398		58,828		58,294		440,569		

Notes:

- Students in distance education and Opportunity Classes (OC) are included with their appropriate grade levels. Students in support classes either in mainstream schools or schools for specific purposes (SPPs) are not included.

Table 9

Age-grade distribution of students in NSW government schools, mid-year 2013, full-time secondary students by age and year of schooling (excluding support students)

Age Yrs:Mths	Year 7		Year 8		Year 9		Year 10		Year 11		Year 12		Total		Secondary Total		
	Boys	Girls	Boys	Girls	Boys	Girls	Boys	Girls	Boys	Girls	Boys	Girls	Boys	Girls	Boys	Girls	
Under 11		1														1	
11-11:11	356	480	3	1										359	481		840
12-12:11	18,256	19,215	371	529	1	1								18,628	19,745		38,373
13-13:11	6,840	4,908	18,354	19,424	423	565	1	3						25,618	24,900		50,518
14-14:11	77	41	6,920	5,187	18,604	19,483	432	607	4	2				26,037	25,320		51,357
15-15:11	2	1	99	61	7,301	5,056	18,691	19,803	420	634	2	6		26,515	25,561		52,076
16-16:11			1	2	149	95	7,730	5,521	16,595	18,374	352	540		24,827	24,532		49,359
17-17:11					4	3	248	212	5,972	4,712	13,210	15,595		19,434	20,522		39,956
18-18:11						1	23	30	392	310	4,414	3,863		4,829	4,204		9,033
19-19:11							10	19	77	59	297	253		384	331		715
20-20:11							6	12	22	24	49	49		77	85		162
21 and Over							34	51	37	25	53	50		124	126		250
Subtotal	25,531	24,646	25,748	25,204	26,482	25,204	27,175	26,258	23,519	24,140	18,377	20,356		146,832	145,808		292,640
Total	50,177		50,952		51,686		53,433		47,659		38,733		292,640				

Notes:

- Students in distance education are included with their appropriate grade levels. Students in support classes either in mainstream schools or schools for specific purposes (SPPs) are not included.

Figure 3

Enrolments (FTE) in NSW government schools by year of schooling and gender, mid-year 2013

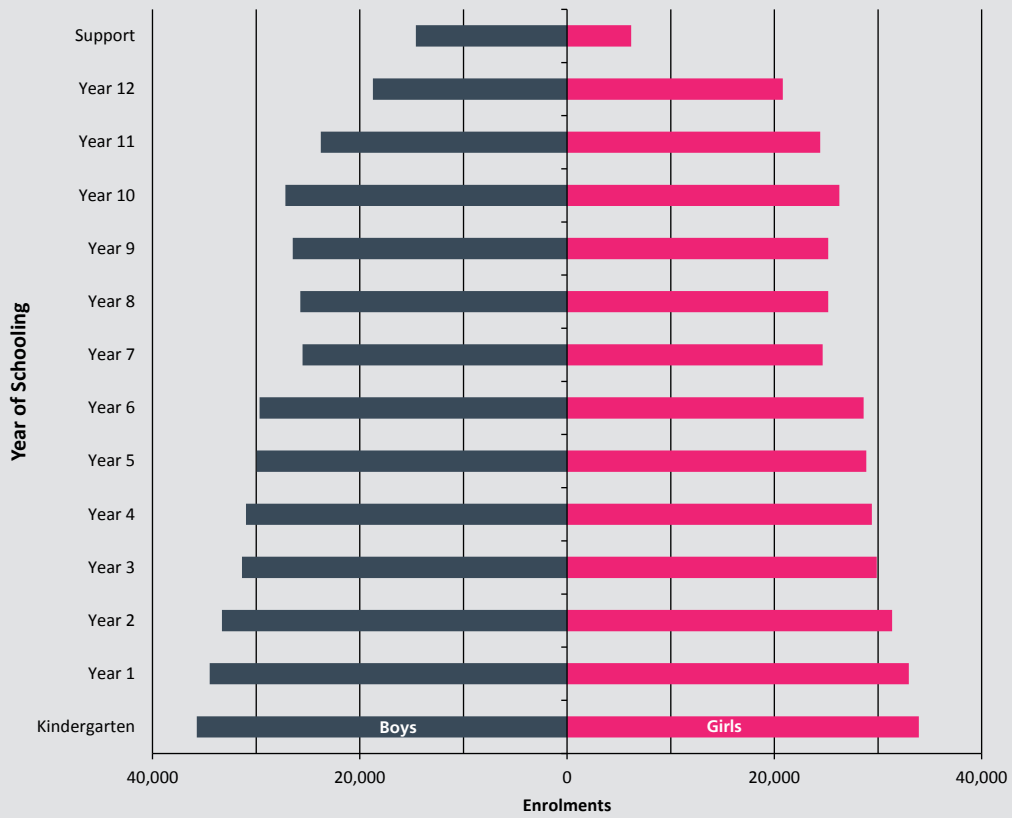


Figure 4

Enrolments (FTE) in NSW government schools by age and gender, mid-year 2013

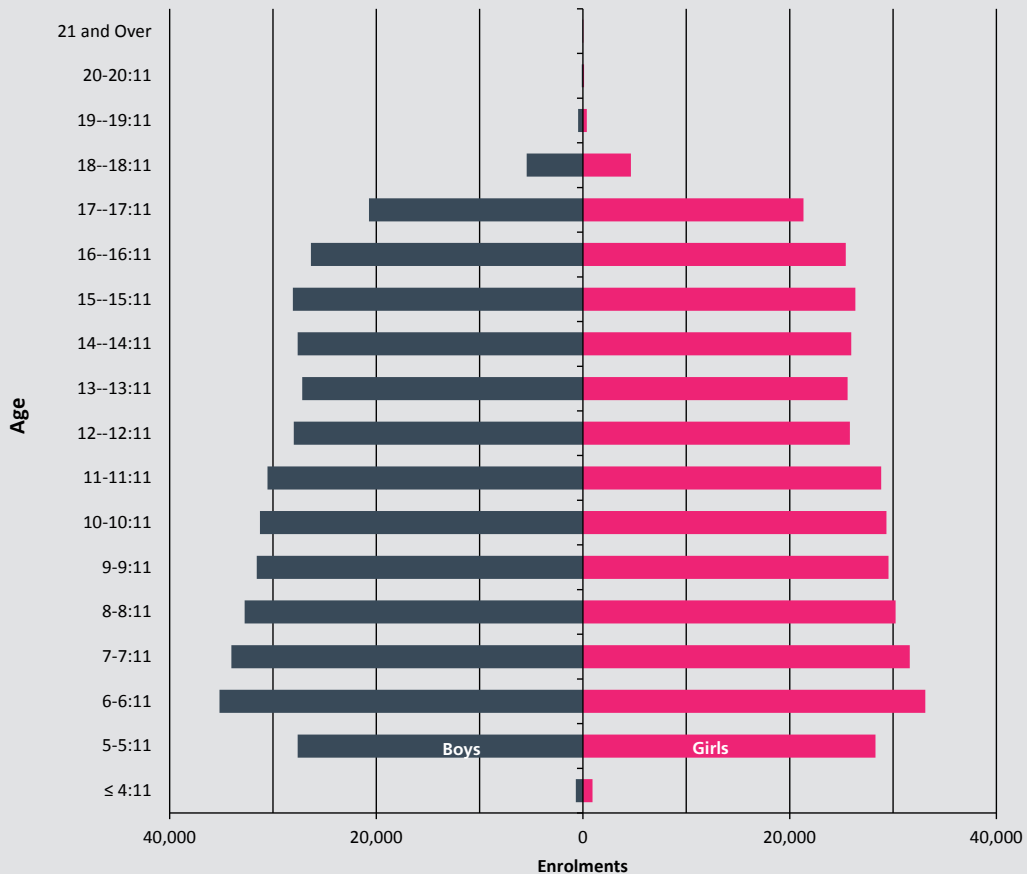


Table 10

Age-grade distribution of students in NSW government schools, mid-year 2013

part-time secondary students by age and year of schooling

Age Yrs:Mths	Year 11		Year 12		Total		Total Part-time
	Boys	Girls	Boys	Girls	Boys	Girls	
Under 16	14	6			14	6	20
16-16:11	272	282	18	15	290	297	587
17-17:11	109	119	278	364	387	483	870
18-18:11	20	28	195	245	215	273	488
19-19:11	10	4	40	40	50	44	94
20-20:11	3	4	13	13	16	17	33
21 and Over	55	95	17	33	72	128	200
Subtotal	483	538	561	710	1,044	1,248	2,292
Total	1,021		1,271		2,292		

Full-time Equivalent:

Subtotal	253.9	278.5	364.2	455.2	618.0	733.6	1,351.6
Total	532.3		819.3		1,351.6		

Notes:

- See explanatory notes 6 and 7.

Table 11

Enrolments in support classes and schools for specific purposes (SSPs) by category, mid-year 2013

Category	Primary Schools	Secondary Schools	Schools for Specific Purposes	Total
AU	528	457	24	1,009
BD	22	75	484	581
DB	0	0	3	3
ED	287	466	871	1,624
H	136	117	6	259
IE	0	1,985	0	1,985
IM	1,836	3,328	14	5,178
IO	969	1,013	0	1,982
IO/AU	111	13	4	128
IO/IS	804	792	2,758	4,354
IS	34	9	144	187
JJ	0	0	324	324
MC	1,474	947	383	2,804
P	68	95	14	177
TUT	10	145	9	164
V	0	0	26	26
Total	6,279	9,442	5,064	20,785

Key:

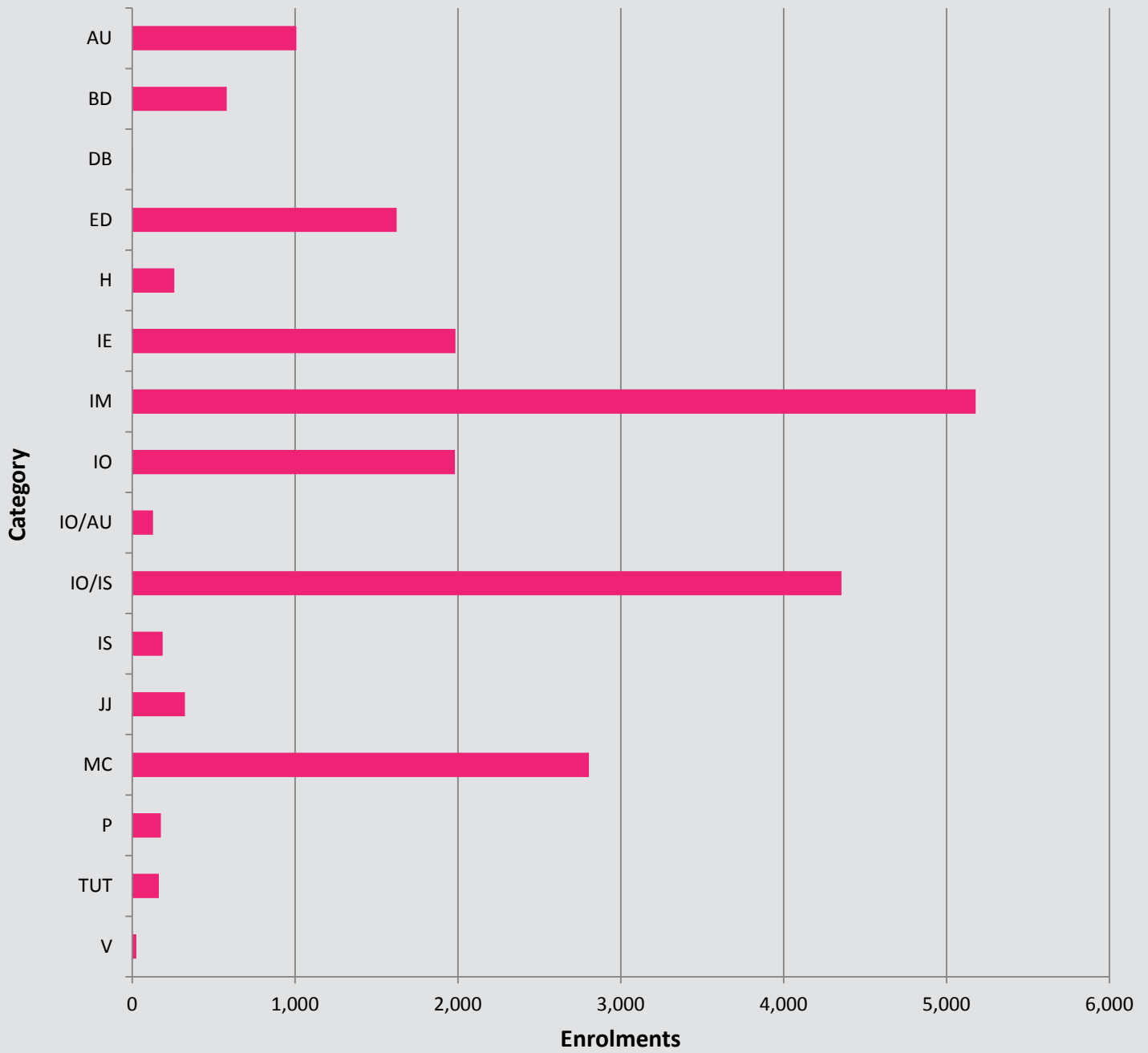
AU	Autism	IM	Mild intellectual disability	MC	Multicategorical
BD	Behaviour disorder	IO	Moderate intellectual disability	P	Physical disability
DB	Visual and hearing disability	IO/AU	Both autism and moderate intellectual disability	TUT	Tutorial
ED	Emotional disturbance	IO/IS	Moderate or severe intellectual disability	V	Visual disability
H	Hearing disability	IS	Severe intellectual disability		
IE	Intensive English	JJ	Juvenile Justice		

Notes:

- Students in SSPs, except those in juvenile justice schools, are reported by the category of their primary disability, not by the type of SSP.
- See explanatory notes 3 and 4.

Figure 5

Enrolments in support classes in ordinary schools and SSPs by category, mid-year 2013



Key:

AU	Autism	IM	Mild intellectual disability	MC	Multicategorical
BD	Behaviour disorder	IO	Moderate intellectual disability	P	Physical disability
DB	Visual and hearing disability	IO/AU	Both autism and moderate intellectual disability	TUT	Tutorial
ED	Emotional disturbance	IO/IS	Moderate or severe intellectual disability	V	Visual disability
H	Hearing disability	IS	Severe intellectual disability		
IE	Intensive English	JJ	Juvenile justice		

Table 13

Age distribution of students in NSW government preschools and early intervention programs, mid-year 2013

Preschools

Age Yrs:Mnths	All Students	Aboriginal and Torres Strait Islander Students
3 and Under	191	35
4:00 - 4:11	3,597	421
5:00 - 5:11	645	99
6 and Over		
Total	4,433	555

Early Intervention

Age Yrs:Mnths	All Students	Aboriginal and Torres Strait Islander Students
3 and Under	47	8
4:00 - 4:11	349	39
5:00 - 5:11	286	29
6:00 - 6:11	2	
Total	684	76

Notes:

- Figures reported above are children enrolled in a preschool or an Early Intervention program that is run by a NSW government school. These government preschool classes provide full-time or part-time schooling at pre-primary level.
- In NSW, most children receiving a preschool education are enrolled at a government funded community preschool or in a Long Day Care centre which offers a preschool program.

Table 14

Enrolments (FTE) in distance education by year of schooling, mid-year 2013

Primary	Boys	Girls	Total
Kindergarten	40	40	80
Year 1	61	43	104
Year 2	52	44	96
Year 3	62	49	111
Year 4	66	54	120
Year 5	58	45	103
Year 6	70	50	120
Primary Support	7	6	13
Total Primary	416	331	747
Secondary	Boys	Girls	Total
Year 7	50	40	90
Year 8	117	104	221
Year 9	193	189	382
Year 10	331	400	731
Year 11	160.9	208.7	369.6
Year 12	62.9	90.5	153.4
Secondary Support	18	14	32
Total Secondary	932.8	1,046.2	1,979.0
Total All Students	1,348.8	1,377.2	2,726.0

Notes:

- All enrolments are reported in full-time equivalent units (FTE), and include full-time and part-time students whose main school is the distance education centre.
- See explanatory note 5.



Table 15

Enrolments (FTE) of Aboriginal students by ABS statistical area and grade groups in NSW government schools, mid-year 2013

Statistical Area 4	K-2	Yr3-6	Primary Total	Yr7-10	Yr11-12	Secondary Total	Statistical Area Total	% Aboriginal
Syd - Baulkham Hills and Hawkesbury	70	95	165	120	31.1	151.1	319.1	1.3%
Syd - Blacktown	724	836	1,560	662	175.9	837.9	2,462.9	6.8%
Syd - City and Inner South	169	193	362	132	49.9	181.9	563.9	4.1%
Syd - Eastern Suburbs	91	119	210	141	40.8	181.8	394.8	2.6%
Syd - Inner South West	175	195	370	148	63.0	211.0	596.0	1.2%
Syd - Inner West	90	90	180	117	26.2	143.2	330.2	1.4%
Syd - North Sydney and Hornsby	36	42	78	18	10.6	28.6	114.6	0.3%
Syd - Northern Beaches	31	42	73	53	10.0	63.0	139.0	0.5%
Syd - Outer South West	600	672	1,272	614	157.8	771.8	2,119.8	6.3%
Syd - Outer West and Blue Mountains	604	737	1,341	680	179.0	859.0	2,247.0	6.4%
Syd - Parramatta	154	182	336	123	41.7	164.7	541.7	1.3%
Syd - Ryde	23	24	47	30	7.0	37.0	84.0	0.5%
Syd - South West	301	352	653	320	93.6	413.6	1,078.6	2.2%
Syd - Sutherland	89	117	206	124	42.0	166.0	376.0	1.5%
Sydney Total	3,157	3,696	6,853	3,282	928.6	4,210.6	11,367.6	2.7%
Capital Region	479	605	1,084	612	127.3	739.3	1,828.3	8.2%
Central Coast	716	892	1,608	855	268.6	1,123.6	2,803.6	7.2%
Central West	841	1,007	1,848	977	262.4	1,239.4	3,109.4	13.0%
Coffs Harbour - Grafton	517	593	1,110	646	158.4	804.4	1,941.4	11.9%
Far West and Orana	1,388	1,669	3,057	1,704	440.8	2,144.8	5,234.8	34.7%
Hunter Valley exc Newcastle	800	1,009	1,809	833	204.6	1,037.6	2,856.6	9.4%
Illawarra	517	650	1,167	606	175.0	781.0	1,961.0	6.0%
Mid North Coast	843	1,031	1,874	1,016	288.0	1,304.0	3,178.0	13.8%
Murray	273	327	600	289	63.8	352.8	961.8	7.8%
New England and North West	1,402	1,463	2,865	1,500	377.6	1,877.6	4,782.6	21.4%
Newcastle and Lake Macquarie	726	939	1,665	928	238.1	1,166.1	2,866.1	7.1%
Richmond - Tweed	671	862	1,533	894	294.2	1,188.2	2,732.2	10.8%
Riverina	598	657	1,255	679	154.0	833.0	2,131.0	11.9%
Southern Highlands and Shoalhaven	421	502	923	491	123.0	614.0	1,554.0	9.8%
Rest of NSW	10,192	12,206	22,398	12,030	3,175.8	15,205.8	37,940.8	11.3%
State Total	13,349	15,902	29,251	15,312	4,104.4	19,416.4	49,308.4	6.5%
Aboriginal total as a percentage of total enrolments in each grade group	6.6%	6.5%	6.5%	7.1%	4.7%	6.4%	6.5%	

Notes:

- Students in Distance Education and Opportunity Classes (OC) are included with their appropriate grade levels.
- Primary support students are included in Year 3 to 6. Secondary support students are included in Year 7 to 10.
- There were 641 Aboriginal students enrolled in SSP's, representing 12.7% of total SSP enrolments. This figure is not broken down into ABS statistical area 4 but is included in Statistical Area Total.
- See explanatory notes 8 and 17.

Table 16

Enrolment of students of language background other than English (LBOTE) in NSW government schools, March 2013 by ABS statistical area and grade groups

Statistical Area 4	K-2	Yr3-6	Primary Total	Yr7-10	Yr11-12	Secondary Total	Statistical Area Total	% LBOTE
Syd - Baulkham Hills and Hawkesbury	2,245	2,900	5,145	2,968	1,520	4,488	9,672	38.0%
Syd - Blacktown	4,806	5,875	10,681	4,015	1,732	5,747	16,540	45.6%
Syd - City and Inner South	1,830	2,019	3,849	2,057	1,248	3,305	7,154	51.6%
Syd - Eastern Suburbs	1,613	1,712	3,325	2,439	1,405	3,844	7,195	47.8%
Syd - Inner South West	10,515	12,946	23,461	9,980	4,898	14,878	38,638	77.9%
Syd - Inner West	3,306	4,008	7,314	4,433	2,136	6,569	13,973	61.2%
Syd - North Sydney and Hornsby	3,761	4,312	8,073	4,542	2,487	7,029	15,152	42.4%
Syd - Northern Beaches	1,584	1,688	3,272	1,492	889	2,381	5,673	22.1%
Syd - Outer South West	2,283	3,075	5,358	3,202	1,518	4,720	10,159	30.2%
Syd - Outer West and Blue Mountains	1,329	1,690	3,019	1,902	1,245	3,147	6,198	17.7%
Syd - Parramatta	8,781	9,879	18,660	7,758	3,809	11,567	30,466	75.7%
Syd - Ryde	2,542	2,991	5,533	2,366	1,276	3,642	9,218	54.0%
Syd - South West	8,774	11,820	20,594	10,738	5,228	15,966	36,713	76.1%
Syd - Sutherland	1,072	1,510	2,582	1,884	904	2,788	5,394	21.0%
Sydney Total	54,441	66,425	120,866	59,776	30,295	90,071	212,145	50.0%
Capital Region	431	575	1,006	471	180	651	1,659	7.4%
Central Coast	740	982	1,722	1,088	487	1,575	3,326	8.5%
Central West	254	256	510	276	106	382	899	3.7%
Coffs Harbour - Grafton	212	274	486	307	137	444	932	5.7%
Far West and Orana	138	171	309	152	66	218	527	3.5%
Hunter Valley exc Newcastle	308	368	676	296	113	409	1,087	3.6%
Illawarra	1,300	1,719	3,019	1,640	696	2,336	5,383	16.5%
Mid North Coast	170	227	397	226	95	321	718	3.1%
Murray	195	218	413	185	79	264	679	5.5%
New England and North West	245	276	521	205	88	293	817	3.6%
Newcastle and Lake Macquarie	863	970	1,833	864	362	1,226	3,078	7.7%
Richmond - Tweed	459	503	962	409	169	578	1,540	6.1%
Riverina	435	559	994	418	167	585	1,589	8.8%
Southern Highlands and Shoalhaven	189	283	472	191	64	255	727	4.6%
Rest of NSW	5,939	7,381	13,320	6,728	2,809	9,537	22,961	6.8%
State Total	60,380	73,806	134,186	66,504	33,104	99,608	235,106	30.9%
LBOTE total as a percentage of total enrolments in each grade group	30.0%	30.2%	30.1%	30.8%	34.8%	32.1%	30.9%	

Notes:

- LBOTE enrolments for 2013 are compared to enrolments (headcount) in March 2013.
- LBOTE Bulletins published in years prior to 2013 have compared LBOTE enrolments to February school enrolments of the same year. The change to March data means that a more accurate measure of total enrolments is used as the denominator because they are extracted from the Enrolment Registration Number (ERN) system at the same point in time as the LBOTE collection.
- There were 1,312 LBOTE students enrolled in SSP's, representing 31.1% of total SSP enrolments. This figure is not broken down into ABS statistical area 4 but is included in Statistical Area Total.
- Primary support students are included in Year 3 to 6. Secondary support students are included in Year 7 to 10.
- For more detailed analysis of students of language background other than English, please refer to **CESE Bulletin Issue 5 - Language Diversity in NSW, 2013**.
- See explanatory notes 10 and 17

Table 17

Enrolments (FTE) in NSW government schools by program and ABS statistical area, mid-year 2013

Statistical Area 4	Priority Schools Funding Program	Country Area Program
Syd - Baulkham Hills and Hawkesbury	520.6	
Syd - Blacktown	11,524.7	
Syd - City and Inner South	565.0	
Syd - Eastern Suburbs	323.8	
Syd - Inner South West	10,955.4	
Syd - Inner West	677.0	
Syd - North Sydney and Hornsby		
Syd - Northern Beaches		
Syd - Outer South West	9,248.5	
Syd - Outer West and Blue Mountains	4,969.2	
Syd - Parramatta	12,099.8	
Syd - South West	21,039.1	
Syd - Ryde		
Syd - Sutherland		
Sydney Total	71,923.1	
Capital Region	2,505.2	6,795.0
Central Coast	5,858.0	
Central West	6,608.2	2,124.9
Coffs Harbour - Grafton	3,649.8	
Far West and Orana	7,957.3	5,174.6
Hunter Valley exc Newcastle	9,964.6	16.0
Illawarra	6,619.8	
Mid North Coast	5,287.5	237.0
Murray	3,241.2	4,883.0
New England and North West	8,215.4	4,041.2
Newcastle and Lake Macquarie	4,374.8	
Richmond - Tweed	4,080.6	217.6
Riverina	4,328.6	948.2
Southern Highlands and Shoalhaven	2,066.7	
Rest of NSW	74,757.7	24,437.5
State Total	146,680.8	24,437.5



Notes:

- Programs are not mutually exclusive. It is possible for schools to participate in more than one program.
- See explanatory notes 14, 15 and 17.

Table 18

Primary students in NSW government schools studying a language other than English by year of schooling and language, May 2013

Language Name	Kindergarten	Year 1	Year 2	Year 3	Year 4	Year 5	Year 6	Support	Total
Chinese (Mandarin)	2,674	2,687	3,023	2,667	2,559	2,335	2,511	35	18,491
Italian	2,047	2,205	2,452	2,409	2,005	1,631	1,624	20	14,393
Arabic	1,412	1,448	1,441	1,150	1,108	1,054	996	194	8,803
French	832	829	759	985	977	917	909	6	6,214
Japanese	599	634	697	756	883	1,048	904	36	5,557
Vietnamese	662	624	690	693	706	645	656	10	4,686
Greek	462	625	612	497	447	547	450	28	3,668
Indonesian	328	385	379	503	448	401	566		3,010
Spanish	283	300	275	317	292	284	287	40	2,078
Korean	220	331	260	204	193	183	110		1,501
German	212	180	199	142	137	141	257		1,268
Assyrian	72	85	91	69	102	97	106	42	664
Wiradjuri	64	102	101	80	103	61	67		578
Gumbaynggir	108	104	80	69	56	47	48	15	527
Macedonian	47	72	83	71	78	88	87		526
Hebrew	108	115	92	82	45	34	25		501
Turkish	68	58	65	50	36	53	76	4	410
Khmer	80	49	61	54	57	55	51		407
Bengali	57	29	38	40	27	38	27	20	276
Samoaan	34	42	49	51	34	34	31		275
Punjabi	42	44	50	49	43	11			239
Dari	35	43	32	25	27	19	51		232
Gamilaraay	42	39	39	26	23	18	27	4	218
Auslan	29	35	36	29	34	28	25		216
Serbian	2	26	46	30	24	29	24		181
Urdu	33	23	29	15	16	17	14	30	177
Hindi	39	27	21	28	20	21	9		165
Tamil	19	21	21	16	23	14	28		142
Tongan	24	12	27	12	17	22	20		134
Portuguese		15	4	16	14	38	38		125
Latin				39	30	26	27		122
Dharawal	17	18	18	24	17	15	12		121
Ngemba/Ngiyampaa	16	15	16	16	16	16	15		110
Barkindji/Paakantyi	1	14	14	22	13	23	22		109
Russian	10	14	12	14	11	8	17		86
Wadi Wadi	9	18	8	6	7	9	6	21	84
Farsi	10	5	6	8	10	8	7		54
Dhanggatti	7	11	9	8	7		4		46
Nepali	6	6	5	10	8	8	2		45
Maori	1	7	8	7	7	5	5		40
Maori (Cook Island)	2	4	6	7	4	5	2		30
Lao	4	4	4	4	2	5	5		28
Bundjalung	6	4	1	2	6	4	4		27
Fijian	4	2			1	1	2		10
Total	10,727	11,311	11,859	11,302	10,673	10,043	10,154	505	76,574

Notes:

- The table includes data from the K-6 Community Languages Program (CLP) and the K-6 Languages Program (non-CLP) collections.
- Students may study more than one language.
- Students in Distance Education and Opportunity Classes (OC) are included with their appropriate grade levels.

Table 19

Language participation Year 7-9 by gender and year of schooling, August 2013

Languages	Year 7			Year 8			Year 9			All Students		
	Boys	Girls	Total	Boys	Girls	Total	Boys	Girls	Total	Boys	Girls	Total
Japanese	5,637	5,373	11,010	4,617	4,578	9,195	1,072	1,359	2,431	11,326	11,310	22,636
French	4,158	3,904	8,062	3,562	4,386	7,948	378	1,051	1,429	8,098	9,341	17,439
Chinese (Mandarin)	1,242	1,067	2,309	1,384	1,076	2,460	287	329	616	2,913	2,472	5,385
Italian	949	872	1,821	1,358	1,523	2,881	125	268	393	2,432	2,663	5,095
German	1,003	716	1,719	1,164	1,053	2,217	235	257	492	2,402	2,026	4,428
Indonesian	1,092	981	2,073	764	650	1,414	49	98	147	1,905	1,729	3,634
Spanish	752	723	1,475	424	612	1,036	57	79	136	1,233	1,414	2,647
Korean	247	261	508	82	65	147	58	55	113	387	381	768
Greek (Modern)	70	151	221	178	199	377	18	63	81	266	413	679
Arabic	202	54	256	131	132	263	37	70	107	370	256	626
Latin	91	61	152	138	145	283	66	79	145	295	285	580
Vietnamese	42	52	94	102	90	192	26	40	66	170	182	352
Gumbaynggir	103	104	207	16	21	37				119	125	244
Wiradjuri	34	39	73	68	45	113	1	2	3	103	86	189
Dhurga	85	100	185							85	100	185
Turkish	8	15	23	18	19	37	13	43	56	39	77	116
Barkindji/Paakantyi	6	9	15	24	28	52	7	4	11	37	41	78
Macedonian	7	10	17	7	18	25	8	21	29	22	49	71
Yuwaalaraay	26	24	50							26	24	50
Gamilaraay	12	14	26	12	10	22				24	24	48
Polish	3	6	9	8	11	19	6	8	14	17	25	42
Serbian	2	9	11	5	8	13	6	8	14	13	25	38
Fijian				11	23	34				11	23	34
Hebrew	8	3	11	9	7	16	1	4	5	18	14	32
Hindi	3	3	6	5	2	7	8	7	15	16	12	28
Greek (Classical)				5		5	12	5	17	17	5	22
Bengali	1	3	4	2	4	6	3	6	9	6	13	19
Croatian	6		6	1	4	5	1	3	4	8	7	15
Portuguese	1	2	3		1.0	1.0		4	4	1	7	8
Armenian		3	3	1	3	4				1	6	7
Maltese		1	1	2	1	3	1	1	2	3	3	6
Hungarian	1	1	2	1	2	3				2	3	5
Khmer	1		1		1	1	1	1	2	2	2	4
Russian							4		4	4		4
Total	15,792	14,561	30,353	14,099	14,717	28,816	2,480	3,865	6,345	32,371	33,143	65,514

Notes:

- The table includes students studying a language through the Saturday School of Community Languages.
- The table includes only students learning a language on average for more than 1 hour per week for 35 or more weeks a year.
- There were an additional 25,872 students who were learning a language for a shorter duration.

Table 20

Course enrolments in Year 10 subjects in NSW government schools, 2013

BOS Course ID	Course Name	Hours	Boys	Girls	Total
300	English	200	26,275	25,296	51,571
301	English (Life Skills)		1,224	620	1,844
323	Mathematics	200	26,371	25,365	51,736
324	Mathematics (Life Skills)		1,211	620	1,831
350	Science	200	26,245	25,263	51,508
351	Science (Life Skills)		1,208	617	1,825
410	Aboriginal Studies	200	79	85	164
411	Aboriginal Studies	100	36	46	82
412	Aboriginal Studies (Life Skills)		49	15	64
430	Commerce	200	4,647	4,127	8,774
431	Commerce	100	798	901	1,699
432	Commerce (Life Skills)		20	12	32
440	Geography	200	144	58	202
441	Geography	100	163	290	453
450	History	200	1,495	1,414	2,909
451	History	100	547	762	1,309
500	Work Education	200	374	370	744
501	Work Education	100	795	648	1,443
502	Work Education (Life Skills)		397	183	580
791	Aboriginal Languages	100	1		1
792	Aboriginal Languages (Life Skills)		20	6	26
800	Arabic	200	28	59	87
801	Arabic	100	6	13	19
810	Chinese	200	232	350	582
811	Chinese	100	28	63	91
812	Chinese (Life Skills)		4	5	9
870	French	200	329	941	1,270
871	French	100	48	121	169
872	French (Life Skills)		12	9	21
880	German	200	147	159	306
881	German	100	21	12	33
882	German (Life Skills)		7	8	15
890	Hebrew	200	3	4	7
910	Indonesian	200	40	64	104
911	Indonesian	100	6	8	14
912	Indonesian (Life Skills)			2	2
920	Italian	200	101	271	372
921	Italian	100	24	67	91
922	Italian (Life Skills)		20	18	38
930	Japanese	200	677	1,059	1,736
931	Japanese	100	104	157	261
932	Japanese (Life Skills)		17	10	27
940	Korean	200	23	40	63
941	Korean	100	5	24	29
950	Latin	200	59	64	123
990	Modern Greek	200	18	32	50
991	Modern Greek	100	2	5	7
992	Modern Greek (Life Skills)		3	4	7
1010	Russian	200	2	3	5
1040	Spanish	200	16	53	69
1041	Spanish	100	6	15	21
1042	Spanish (Life Skills)		5	4	9
1050	Turkish	200	8	11	19
1051	Turkish	100	2		2
1071	Vietnamese	200	37	42	79
1072	Vietnamese	100	5	5	10

Table 20

Course enrolments in Year 10 subjects in NSW government schools, 2013 (continued)

BOS Course ID	Course Name	Hours	Boys	Girls	Total
1605	Agricultural Technology	200	2,345	1,820	4,165
1606	Agricultural Technology	100	560	483	1,043
1607	Agricultural Technology (Life Skills)		89	42	131
1625	Food Technology	200	4,313	7,621	11,934
1626	Food Technology	100	1,151	1,799	2,950
1627	Food Technology (Life Skills)		464	266	730
1650	Design and Technology	200	427	719	1,146
1651	Design and Technology	100	256	259	515
1652	Design & Technology (Life Skills)		107	50	157
1700	Graphics Technology	200	1,275	313	1,588
1701	Graphics Technology	100	467	129	596
1702	Graphics Technology (Life Skills)		3	1	4
1800	Industrial Technology (Automotive)	200	428	9	437
1801	Industrial Technology (Automotive)	100	98	11	109
1802	Industrial Technology (Building and Construction)	200	400	9	409
1803	Industrial Technology (Building and Construction)	100	155	14	169
1804	Industrial Technology (Ceramics)	200	16	38	54
1805	Industrial Technology (Ceramics)	100	17	35	52
1806	Industrial Technology (Electronics)	200	1,314	49	1,363
1807	Industrial Technology (Electronics)	100	292	12	304
1808	Industrial Technology (Engineering)	200	2,059	101	2,160
1809	Industrial Technology (Engineering)	100	460	58	518
1810	Industrial Technology (Farm Maintenance)	200	46	2	48
1811	Industrial Technology (Farm Maintenance)	100	6	1	7
1812	Industrial Technology (Leather)	200	6	2	8
1813	Industrial Technology (Leather)	100	4	3	7
1814	Industrial Technology (Metal)	200	2,751	181	2,932
1815	Industrial Technology (Metal)	100	982	109	1,091
1816	Industrial Technology (Multimedia/Photography)	200	600	293	893
1817	Industrial Technology (Multimedia/Photography)	100	144	160	304
1820	Industrial Technology (Timber)	200	6,720	742	7,462
1821	Industrial Technology (Timber)	100	1,179	308	1,487
1822	Industrial Technology (Life Skills)		225	65	290
1830	Information & Software Technology	200	4,622	1,363	5,985
1831	Information & Software Technology	100	988	422	1,410
1832	Information & Software Technology (Life Skills)		197	68	265
1900	Textiles Technology	200	28	2,243	2,271
1901	Textiles Technology	100	27	848	875
1902	Textiles Technology (Life Skills)		22	31	53
2000	Dance	200	68	1,829	1,897
2001	Dance	100	30	365	395
2002	Dance (Life Skills)		12	24	36
2010	Drama	200	1,314	3,305	4,619
2011	Drama	100	311	744	1,055
2012	Drama (Life Skills)		37	34	71
2050	Music	200	3,654	3,410	7,064
2051	Music	100	634	690	1,324
2052	Music (Life Skills)		315	151	466
2060	Visual Arts	200	2,675	6,368	9,043
2061	Visual Arts	100	672	1,239	1,911
2062	Visual Arts (Life Skills)		497	318	815
2070	Visual Design	200	297	717	1,014
2071	Visual Design	100	206	436	642
2072	Visual Design (Life Skills)		6	7	13
2080	Photographic and Digital Media	200	1,371	3,422	4,793
2081	Photographic and Digital Media	100	497	1,202	1,699

Table 20

Course enrolments in Year 10 subjects in NSW government schools, 2013 (continued)

BOS Course ID	Course Name	Hours	Boys	Girls	Total
2082	Photographic and Digital Media (Life Skills)		17	33	50
2420	Personal Development, Health and P.E.	200	13,369	12,899	26,268
2421	Personal Development, Health and P.E.	100	12,470	11,946	24,416
2422	Personal Development, Health and P.E. (Life Skills)		1,115	584	1,699

Number of students meeting the curriculum requirements for the Record of School Achievement (RSA), Year 10 students in NSW government schools, 2013

In 2012, the School Certificate was discontinued and replaced by the Record of School Achievement (RSA). The RSA is a record of a student's achievements from Year 10 until they leave school.

The table shows the number of Year 10 students that completed the mandatory courses for an RSA. Some courses may have been completed when the students were in Year 7, 8 or 9. For example, the Languages course would have been completed by students when they were in Year 7 or 8.

	Boys	Girls	Total
Number of students	26,536	25,254	51,790

Source: Department of Education and Communities, data derived from Board of Studies data.

Notes:

- The table includes students studying a language through the Saturday School of Community Languages.
- Hours equal to the number of hours studied over Years 9 and 10.
- From 2012, eligible students who leave school before receiving their Higher School Certificate (HSC) will receive the NSW Record of School Achievement (RSA).
- Students need to complete the mandatory requirements for Stage 5 (Year 10) to be eligible for a RSA. They must have:
 - » attended a government school, an accredited non-government school or a recognised school outside NSW;
 - » undertaken and completed courses of study that satisfy the Board's curriculum and assessment requirements for the Record of School Achievement;
 - » complied with any other regulations or requirements (such as attendance) imposed by the Minister or the Board; and
 - » completed Year 10.
- Students intending to leave school before completing their HSC can take optional online literacy and numeracy tests. They are designed to provide an overview of a student's level of achievement in these areas.
- Students are required to complete the following mandatory curriculum for the RSA:
 - » English
 - » Mathematics
 - » Science
 - » Human Society and its Environments
 - » Languages other than English
 - » Technological and Applied Studies
 - » Creative Arts
 - » Personal Development, Health and Physical Education

Table 21

Course enrolments in Year 11 and Year 12 subjects in NSW government schools, 2013

Course Name	Units	Year 11			Year 12		
		Boys	Girls	Total	Boys	Girls	Total
Aboriginal Studies	2	184	433	617	95	241	336
Aboriginal Studies Life Skills	2	26	6	32	6	9	15
Aged Care Specialisation Study	1					1	1
Agriculture	2	736	722	1458	487	504	991
Agriculture Life Skills	2	37	11	48	18	12	30
Ancient History	2	4004	5221	9225	2800	4174	6974
Arabic Beginners	2				2	1	3
Arabic Continuers	2	72	103	175	47	80	127
Arabic Extension	1				11	23	34
Armenian Continuers	2	2	1	3		3	3
Automotive	2	58	1	59	2		2
Automotive	4	1		1			
Automotive Examination	2				3		3
Automotive Specialisation Study	1	2		2			
Biology	2	5147	8099	13246	3589	6085	9674
Business and Economics Life Skills	2	15	8	23	18	3	21
Business Services	2	386	1125	1511	335	924	1259
Business Services	4		1	1	32	17	49
Business Services Examination	2				218	631	849
Business Services Specialisation Study	2					1	1
Business Services Specialisation Study	3				1		1
Business Studies	2	5577	5682	11259	4073	4183	8256
Chemistry	2	5229	4493	9722	3558	2952	6510
Chinese Background Speakers	2	312	353	665	221	292	513
Chinese Beginners	2	20	30	50	14	16	30
Chinese Continuers	2	16	20	36	12	11	23
Chinese Extension	1					4	4
Citizenship and Legal Studies Life Skills	2	78	38	116	66	39	105
Classical Greek Continuers	2				1		1
Classical Greek Extension	1				1		1
Community and Family Studies	2	511	6086	6597	298	4339	4637
Community Pharmacy Specialisation Study	1		1	1			
Community Pharmacy Specialisation Study	2	1		1			
Construction	2	3189	93	3282	2014	41	2055
Construction	4	99	3	102	62	2	64
Construction Examination	2				1417	35	1452
Creative Arts Life Skills	2	368	182	550	224	140	364
Croatian Continuers	2	3	1	4	1	2	3
Dance	2	75	871	946	35	597	632
Dance Life Skills	2	4	11	15	2	7	9
Design and Technology	2	1382	832	2214	819	519	1338
Design and Technology Life Skills	2	50	8	58	21	15	36
Drama	2	1076	2330	3406	679	1628	2307
Drama Life Skills	2	28	21	49	11	9	20
Dutch Continuers	2	1		1	1	1	2
Earth and Environmental Science	2	720	606	1326	412	400	812
Economics	2	2121	1381	3502	1559	1058	2617
Electrotechnology	2	19		19	1		1
Engineering Studies	2	2245	167	2412	1477	64	1541
English (Advanced)	2	6508	9532	16040	5297	8132	13429
English (Standard)	2	10848	10326	21174	9497	9584	19081
English as a Second Language	2	1057	1097	2154	958	936	1894
English Extension	1	1597	2564	4161			
English Extension 1	1				702	1739	2441

Table 21

Course enrolments in Year 11 and Year 12 subjects in NSW government schools, 2013 (continued)

Course Name	Units	Year 11			Year 12		
		Boys	Girls	Total	Boys	Girls	Total
English Extension 2	1				233	726	959
English Life Skills	2	1087	491	1578	736	450	1186
Entertainment Industry	2	462	529	991	338	382	720
Entertainment Industry	4				2		2
Entertainment Industry Examination	2				292	331	623
Filipino Continuers	2	2	9	11	5	21	26
Financial Services	2	7	6	13	1	4	5
Financial Services Examination	2				1	3	4
Food Technology	2	1016	2386	3402	744	1710	2454
Food Technology Life Skills	2	180	93	273	78	69	147
French Beginners	2	154	667	821	82	394	476
French Continuers	2	82	332	414	54	241	295
French Extension	1				9	37	46
Fundamentals of English	2	173	145	318			
Fundamentals of English (Part 1)	1	295	382	677			
Fundamentals of English (Part 2)	1	37	30	67			
General Mathematics	2	241	200	441	9149	9642	18791
Geography	2	1418	1129	2547	998	839	1837
Geography Life Skills	2	62	38	100	53	14	67
German Beginners	2	26	49	75	19	43	62
German Continuers	2	65	116	181	47	82	129
German Extension	1				5	23	28
Heritage Chinese (Mandarin)	2	42	86	128	15	58	73
Heritage Indonesian	2		2	2			
Heritage Japanese	2	7	9	16	2	9	11
Heritage Korean	2	18	27	45	8	37	45
Hindi Continuers	2	10	6	16	2	10	12
History Extension	1				281	548	829
History Life Skills	2	95	57	152	43	23	66
Hospitality	2	2442	5190	7632	1642	3706	5348
Hospitality	4	23	56	79	51	70	121
Hospitality Examination	2				1317	3071	4388
Hospitality Specialisation Study	1	2	7	9	87	138	225
Hospitality Specialisation Study	2	6	7	13	26	45	71
Human Services	2	12	123	135	13	184	197
Human Services	4	12	41	53			
Human Services Examination	2				5	95	100
Human Society and its Environment Life Skills	2	340	143	483	161	116	277
Hungarian Continuers	2	3	2	5		2	2
Indonesian Background Speakers	2	3	4	7	3	4	7
Indonesian Beginners	2	21	23	44	2	13	15
Indonesian Continuers	2	11	34	45	9	19	28
Indonesian Extension	1				4	4	8
Industrial Technology	2	5170	637	5807	3144	389	3533
Industrial Technology Life Skills	2	102	8	110	86	13	99
Information and Digital Technology	2	947	191	1138	7	1	8
Information and Digital Technology Specialisation Study	4	4	1	5			
Information Processes and Technology	2	1748	512	2260	1418	387	1805
Information Processes and Technology Life Skills	2	31	14	45	32	11	43
Information Technology	2				744	206	950
Information Technology	4	1		1	36	11	47
Information Technology Examination	2				641	174	815
Information Technology Specialisation Study	1				3	1	4
Information Technology Specialisation Study	2				13	2	15

Table 21

Course enrolments in Year 11 and Year 12 subjects in NSW government schools, 2013 (continued)

Course Name	Units	Year 11			Year 12		
		Boys	Girls	Total	Boys	Girls	Total
Information Technology Specialisation Study	4	1		1			
Italian Beginners	2	81	209	290	35	117	152
Italian Continuers	2	29	58	87	20	57	77
Italian Extension	1					3	3
Japanese Background Speakers	2	4	6	10	7	12	19
Japanese Beginners	2	363	503	866	210	266	476
Japanese Continuers	2	192	413	605	146	303	449
Japanese Extension	1				31	109	140
Khmer Continuers	2	12	8	20	11	8	19
Korean Background Speakers	2	13	60	73	21	32	53
Korean Continuers	2	1	12	13		5	5
Latin Continuers	2	21	42	63	15	35	50
Latin Extension	1				9	21	30
Legal Studies	2	3141	4938	8079	2096	3541	5637
Macedonian Continuers	2	6	17	23	4	10	14
Mathematics	2	7381	6259	13640	4748	4206	8954
Mathematics Extension	1	4006	3025	7031			
Mathematics Extension 1	2				2925	2176	5101
Mathematics Extension 2	2				1239	766	2005
Mathematics General	2	12582	12328	24910			
Mathematics Life Skills	2	1034	449	1483	702	420	1122
Metal and Engineering	2	1786	68	1854	1164	33	1197
Metal and Engineering	4	20	2	22	39	1	40
Metal and Engineering Examination	2				823	21	844
Modern Greek Beginners	2	15	20	35	15	13	28
Modern Greek Continuers	2	11	22	33	13	20	33
Modern Greek Extension	1				2	5	7
Modern Hebrew Continuers	2	3	1	4			
Modern History	2	3434	3914	7348	2492	2887	5379
Music 1	2	2269	1955	4224	1584	1462	3046
Music 2	2	248	256	504	176	254	430
Music Extension	1				108	152	260
Music Life Skills	2	64	38	102	46	35	81
Persian Background Speakers	2	11	10	21	15	17	32
Personal Development, Health & PE Life Skills	2	776	320	1096	505	292	797
Personal Development, Health and Physical Education	2	4654	5436	10090	3491	4133	7624
Physics	2	5848	1756	7604	4426	1288	5714
Polish Continuers	2	5	4	9	5	5	10
Portuguese Continuers	2	5	2	7		1	1
Primary Industries	2	788	411	1199	421	278	699
Primary Industries	4	16	9	25	25	10	35
Primary Industries Examination	2				294	232	526
Primary Industries Specialisation Study	1		1	1	1	2	3
Primary Industries Specialisation Study	2	24		24	26	1	27
Retail Services	2	681	1340	2021	422	948	1370
Retail Services	4		2	2	49	50	99
Retail Services Examination	2				321	707	1028
Russian Background Speakers	2	6	9	15	4	5	9
Science Life Skills	2	556	187	743	276	155	431
Senior Science	2	1730	1434	3164	1801	1700	3501
Serbian Continuers	2	3	8	11	2	10	12
Society and Culture	2	1007	3412	4419	491	2093	2584
Society and Culture Life Skills	2	20	10	30	11	15	26
Software Design and Development	2	1555	148	1703	902	89	991

Table 21

Course enrolments in Year 11 and Year 12 subjects in NSW government schools, 2013 (continued)

Course Name	Units	Year 11			Year 12		
		Boys	Girls	Total	Boys	Girls	Total
Spanish Beginners	2	64	184	248	17	126	143
Spanish Continuers	2	32	64	96	23	75	98
Spanish Extension	1				8	17	25
Studies of Religion I	1	346	404	750	114	230	344
Studies of Religion II	2	190	662	852	120	481	601
Studies of Religion II Life Skills	2				3	2	5
Swedish Continuers	2	1	1	2	1		1
Tamil Continuers	2					3	3
Technology Life Skills	2	379	169	548	268	156	424
Textiles and Design	2	28	1595	1623	28	1396	1424
Textiles and Design Life Skills	2	3	16	19	1	19	20
Tourism and Events	2	5	21	26		10	10
Tourism and Events Examination	2					8	8
Turkish Continuers	2	6	16	22	4	13	17
Ukrainian Continuers	2	1		1		2	2
Vietnamese Continuers	2	74	92	166	53	84	137
Visual Arts	2	2187	5176	7363	1473	4000	5473
Visual Arts Life Skills	2	243	136	379	136	112	248
Work and the Community Life Skills	2	747	343	1090	498	320	818

Course Name	Units	Year 11			Year 12		
		Boys	Girls	Total	Boys	Girls	Total
Automotive School-based Apprenticeship	2	13	1	14	2		2
Construction School-based Apprenticeship	2	4		4			
Construction School-based Apprenticeship	4	1		1			
Hospitality School-based Apprenticeship	2	2	1	3	2		2
Metal and Engineering School-based Apprenticeship	2	3		3	1		1

Source: Department of Education and Communities, data derived from Board of Studies data.**Notes:**

- Based on school of tuition, board developed courses only, and includes subjects studied through distance education, the Open High School and Saturday School of Community Languages.

Table 22

Apparent retention in NSW government schools, 2003-2013

Year	Years 7-10			Years 7-11			Years 7-12			Years 10-11			Years 10-12		
	Boys	Girls	Total	Boys	Girls	Total	Boys	Girls	Total	Boys	Girls	Total	Boys	Girls	Total
2003	95.8	96.3	96.0	75.2	84.6	79.8	61.7	71.9	66.7	78.8	87.7	83.2	64.8	75.2	69.9
2004	94.7	96.0	95.4	74.3	83.7	78.9	61.9	73.4	67.5	77.5	87.0	82.2	64.9	76.1	70.4
2005	94.8	95.4	95.1	72.5	83.2	77.7	61.5	73.0	67.2	76.5	86.6	81.4	64.2	75.9	69.9
2006	95.2	95.8	95.5	73.1	83.1	78.0	60.5	72.5	66.4	77.1	87.1	82.0	63.9	75.5	69.6
2007	96.0	96.6	96.3	73.9	83.8	78.7	60.0	71.5	65.7	77.6	87.5	82.4	63.3	75.0	69.1
2008	96.6	96.6	96.6	73.9	84.0	78.8	60.3	72.0	66.0	77.0	86.9	81.9	63.3	75.2	69.1
2009	95.6	97.4	96.5	77.3	85.1	81.1	61.5	73.9	67.6	80.0	88.1	84.0	64.1	76.5	70.2
2010	99.4	100.2	99.8	81.1	89.7	85.3	64.9	74.8	69.7	84.8	92.2	88.4	67.1	77.4	72.2
2011	102.2	102.4	102.3	83.3	91.3	87.2	66.1	77.6	71.7	83.7	91.1	87.3	69.1	79.7	74.3
2012	101.4	102.8	102.1	86.1	93.3	89.6	66.9	77.4	72.0	84.3	91.0	87.6	67.3	77.3	72.2
2013	102.0	102.1	102.0	88.1	94.6	91.3	69.0	79.7	74.3	86.9	92.0	89.4	67.6	77.8	72.6

Notes:

- Apparent retention is based on full-time equivalent units (FTEs), including full-time and part-time students. Students enrolled in distance education classes are included with their appropriate grade levels.
- Legislation raising the minimum school leaving age from 15 to 17 came into effect in January 2010. The Year 12 cohort in 2012 was the first group of students who were required to complete Year 10. This meant that the Year 10 enrolment figure was higher than in previous years, resulting in a relative decline in Year 10 to Year 12 apparent retention in 2012, despite the Year 7 to Year 12 apparent retention rate increasing slightly.
- See explanatory note 9.

Figure 6

Apparent retention (%) in NSW government schools, 2003-2013

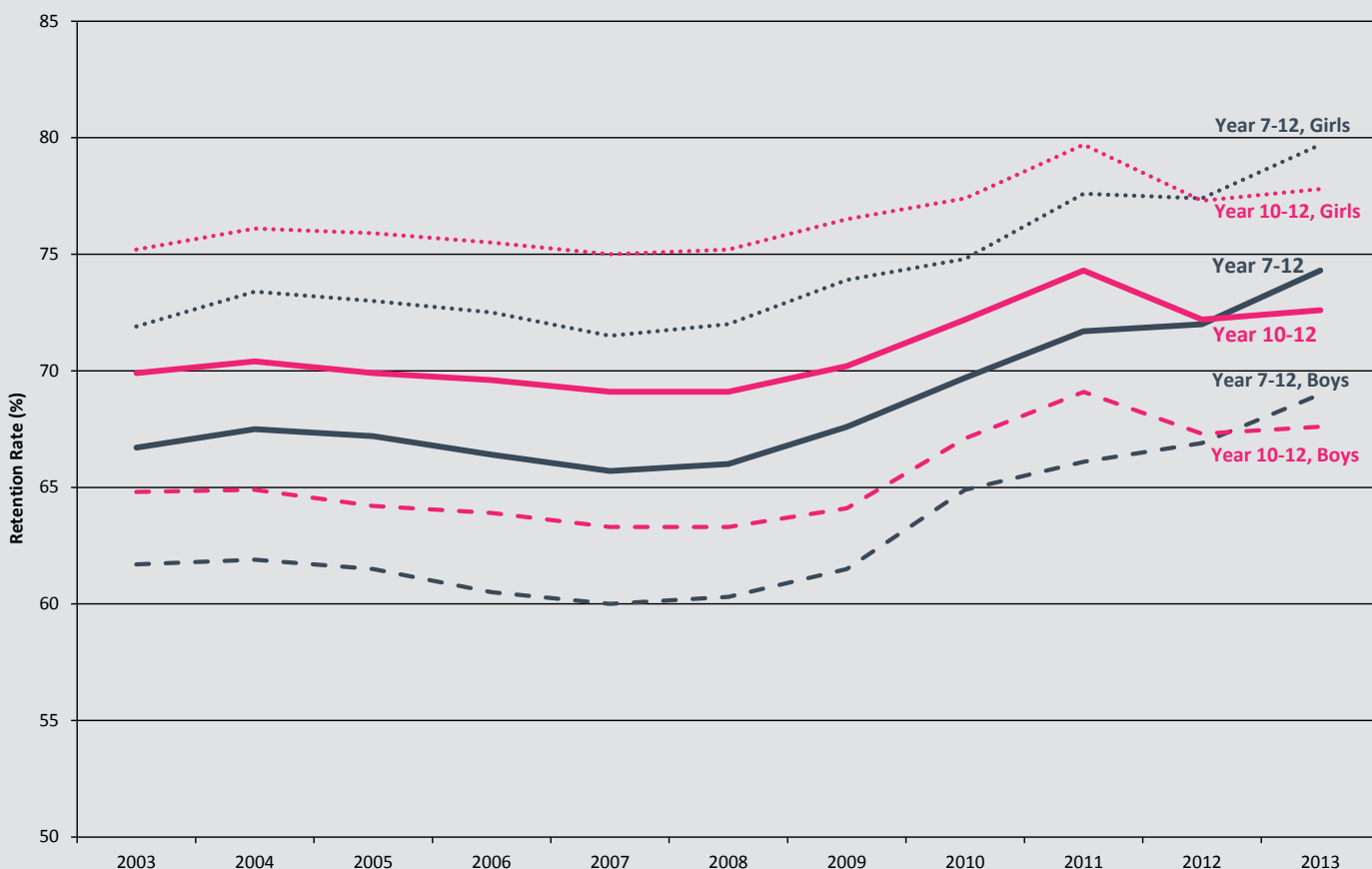


Table 23**NSW government school HSC completions, Year 12 students only, 2003-2013**

Number of Students	2003	2004	2005	2006	2007	2008	2009	2010	2011	2012	2013
HSC Record of Achievement (All Students)	38,579	38,883	38,175	37,739	38,275	38,815	39,164	41,347	41,987	42,452	43,694
HSC Record of Achievement (Aboriginal Students)	400	573	626	646	736	824	906	991	1,082	1,242	1,381
HSC Award (All Students)	36,463	36,660	35,917	35,460	35,854	36,468	36,465	38,181	38,661	38,774	38,908
HSC Award (Aboriginal Students)	364	528	574	603	674	755	815	862	919	1,061	1,150

Source: Department of Education and Communities, data derived from Board of Studies data as at January 2013.

Notes:

- HSC Record of Achievement includes those students awarded an HSC.
- HSC Record of Achievement includes students who participated in HSC pathways.
- HSC pathways offer a flexible program for students to complete the HSC over a period of up to five years. The pathways provisions include accumulating courses, repeating courses, acceleration, recognition of prior learning, and combining study with part-time traineeships or apprenticeships.
- Bradfield college included.
- See explanatory note 13.

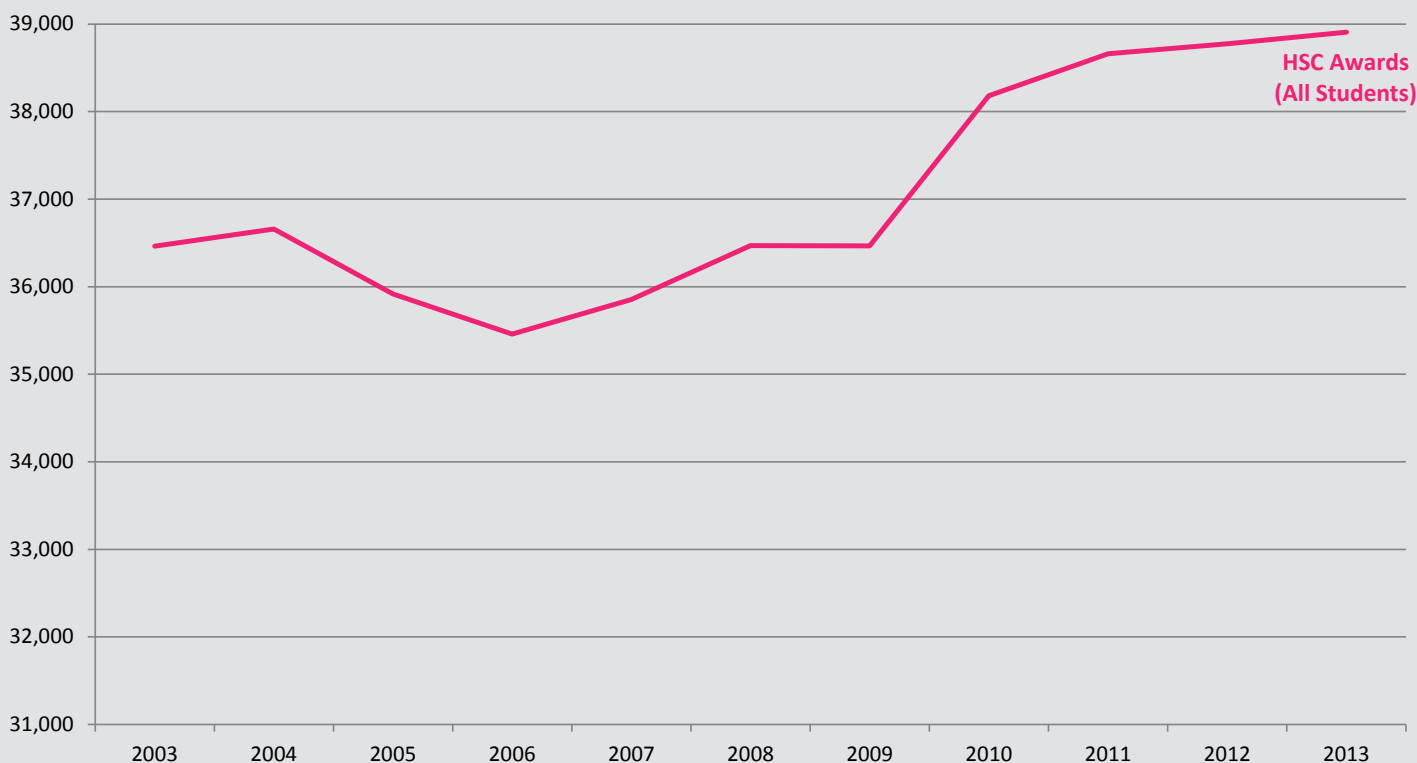
Figure 7**Number of HSC awards (all students) in NSW government schools, 2003-2013**

Table 24

Schools attendance rates by Aboriginality and year level, 2013

Grade	Semester 1 (%)			Semester 2 (%)			Full Year (%)		
	Aboriginal	Non-Aboriginal	All Students	Aboriginal	Non-Aboriginal	All Students	Aboriginal	Non-Aboriginal	All Students
Year 1	90.3	94.8	94.5	89.1	93.3	93.0	89.7	94.1	93.8
Year 2	90.6	95.0	94.7	89.4	93.5	93.2	90.0	94.3	94.0
Year 3	90.9	95.1	94.8	89.5	93.5	93.3	90.3	94.4	94.1
Year 4	90.8	95.0	94.7	89.4	93.4	93.2	90.2	94.3	94.0
Year 5	90.3	94.8	94.5	88.6	93.3	93.0	89.5	94.1	93.9
Year 6	90.0	94.4	94.1	88.1	92.9	92.5	89.1	93.7	93.4
Primary Support	87.7	92.1	91.4	86.0	90.3	89.6	86.9	91.3	90.6
Primary Total	90.4	94.8	94.5	88.9	93.3	93.0	89.7	94.1	93.8
Year 7	86.6	93.7	93.2	83.0	91.8	91.2	85.0	92.8	92.3
Year 8	82.1	91.6	90.9	78.7	90.2	89.4	80.6	91.0	90.2
Year 9	79.1	90.2	89.4	75.3	88.5	87.5	77.4	89.4	88.6
Year 10	75.4	88.6	87.7	72.1	87.1	86.1	73.9	87.9	87.0
Secondary Support	75.2	85.6	84.0	73.6	84.4	82.7	74.5	85.0	83.4
Secondary Total	80.4	90.8	90.1	77.1	89.2	88.4	78.9	90.1	89.3
Yr1-Yr10 (Inc. Support)	86.5	93.4	92.9	84.4	91.8	91.3	85.5	92.7	92.2

Notes:

- The attendance data are for full-time, Year 1-10 students only (including Support).
- All students in Years 1 to 10 in NSW government schools are regarded as full-time.
- Ungraded students in NSW Government Schools are classified as either primary or secondary according to their level of education.
- For more detailed analysis of Semester 1 school attendance, please refer to **CESE Bulletin Issue 6 - Attendance Semester 1, 2013**.
- See explanatory note 11.



Explanatory Notes

Each year the education departments of all states and territories in Australia, and the Australian Government Department of Education collect data on government and non-government schools, and their students. Since 1994 the date for collection has been the first Friday in August, as close as possible with the national Census of Population and Housing conducted every five years. The 2013 census of NSW Government schools was conducted on August 2nd. Initial results were published in CESE Bulletin Issue 7, Inbrief Mid-year Census, 2013.

In 1996, there were changes to the collection dates for some of the information reported in this bulletin. Data on students by age, gender and year of schooling, for all students and for Aboriginal and Torres Strait Islander students, are collected at the mid-year census. Data on students of non-English speaking background are collected in Term 1.

This Bulletin consolidates data from DEC Term 1 and mid-year data collections. It also reports on non-government data collected by the Australian Government Department of Education.

Government and non-government school data form part of the National Schools Statistics Collection which is reported annually by the Australian Bureau of Statistics in Schools Australia (Catalogue No. 4221.0).

1. Primary and Secondary Schools

Primary schools enrol students in Kindergarten to Year 6; secondary schools generally enrol students in Years 7 to 12, although some secondary schools only enrol students in the senior years, i.e. Years 11 to 12 or the junior years, i.e. Years 7 to 10.

2. Central/Community Schools

Central/community schools have primary and secondary departments and may be established where there is an enrolment in secondary classes of 20 or more. Enrolments in primary departments and secondary departments are included with the appropriate student data.

3. Schools for Specific Purposes

Schools for specific purposes (SSPs) are for students with specific needs. Students in SSPs are reported according to the type of specific need rather than by their year of schooling. Students with multiple disabilities are reported according to their main disability.

Most schools for specific purposes have permanent enrolments and include schools for students with intellectual (mild, moderate and severe) and physical disabilities, visual or hearing impairment, behaviour disorders or emotional disturbance, and students in juvenile justice centres. Some SSPs have no permanent enrolments because the children temporarily

attending them are enrolled and counted in their own schools. These are mainly hospital schools.

4. Support Classes

Some students with specific needs are enrolled in support classes in primary, secondary and central schools. Students enrolled in support classes are reported according to the type of specific need rather than by their year of schooling. Support classes for students of mixed abilities are classified according to the predominant type of specific need present in the class. Support class enrolments are included with other primary and secondary enrolments in some tables; other tables combine enrolments in support classes in ordinary schools with enrolments in SSPs.

5. Distance Education

Distance education centres (DECs) provide schooling for students who are isolated or whose special circumstances prevent them from attending a regular school. They operate either as separate schools or as units within regular primary, central and high schools. Students enrolled in DECs are counted in their corresponding years of schooling.

In conjunction with the Open High School, DECs also provide individual subject enrolment, widening study opportunities for secondary students. These students are enrolled and counted at their home schools.

6. Part-time Students

Students in Years 11 or 12 can enrol to study as a part-time student or a full-time student. For the annual census, a part-time student is enrolled in less than 10 units, regardless of where those units are studied. All Kindergarten to Year 10 students are considered to be full-time.

7. Full-time Equivalent Enrolments

Following the introduction of part-time study in secondary schools in 1993, student enrolments are generally reported in full-time equivalent units (FTE). The FTE for students studying less than 10 units, the minimum workload, is determined by the formula: $0.1 \times$ the number of units studied and represented as a proportion of the full-time enrolment of 1.0 FTE.

8. Aboriginal and Torres Strait Islander Students

Students are counted as Aboriginal or Torres Strait Islanders (A&TSI) if they are identified and accepted as such by the community with which they are associated, and they identify themselves on the School Enrolment Form

9. Apparent Retention Rates (ARR)

Retention rates are 'apparent' as they do not track individual students through their final years of secondary schooling. What they measure is the ratio of the total number of full-time equivalent (FTE) enrolments in a designated year (eg Year 12 in 2013) divided by the total number of FTE enrolments in a previous year (eg Year 7 in 2008). This would be the Year 7 to 12 apparent retention rate in 2013. Apparent retention rates can exceed 100 per cent due to a number of factors including migration of students from interstate and overseas and between school sectors.

Care should be taken in the interpretation of apparent retention rates, because they do not adjust for factors such as migration, interstate movements of students, transfers to and from non-government schools, part-time schooling, students repeating a year of schooling, or students pursuing other education and training pathways.

10. Students of Language Background other than English (LBOTE)

Students are counted as being of language background other than English if in their home a language other than English is spoken by the students, parents or guardians.

11. Attendance

Government school systems in Australia measure attendance rates throughout the first semester (terms 1 and 2). This is the time period specified for data collection in National Education Agreements between the Commonwealth and state and territory governments. Schools for Special Purposes' attendance data is not collected.

The attendance rate is defined as the number of actual full time equivalent 'student days attended' over the collection period as a percentage of the total number of possible student days attended over the collection period (Measurement Framework for Schooling in Australia KPM 7(b)).

12. Class Size

The audit of class sizes in NSW government primary schools is undertaken in March each year. The audit does not include schools for specific purposes, distance education centres or intensive English centres.

The number of classes, average class sizes and enrolment numbers exclude support classes in primary and central schools.

13. Higher School Certificate (HSC)

The Higher School Certificate is the highest educational award in secondary education in New South Wales. It is awarded to students who have satisfactorily completed Years 11 and 12 at secondary school. To be eligible, students must meet HSC course requirements and sit for the statewide HSC examinations.

14. Country Areas Program (CAP)

The NSW Country Areas Program assists schools and their communities to enhance the learning and educational opportunities for students living in remote areas.

15. Priority Schools Funding Program (PSFP)

The Priority Schools Funding Program provides additional assistance to school communities to reduce the achievement gap for students in schools with high concentrations of students from low socio-economic status backgrounds.

The PSFP focuses on improving students' literacy, numeracy and participation outcomes. The activities of the PSFP include professional learning for teachers and community members, resource materials development, research and sharing of effective practice in local networks of Priority Schools.

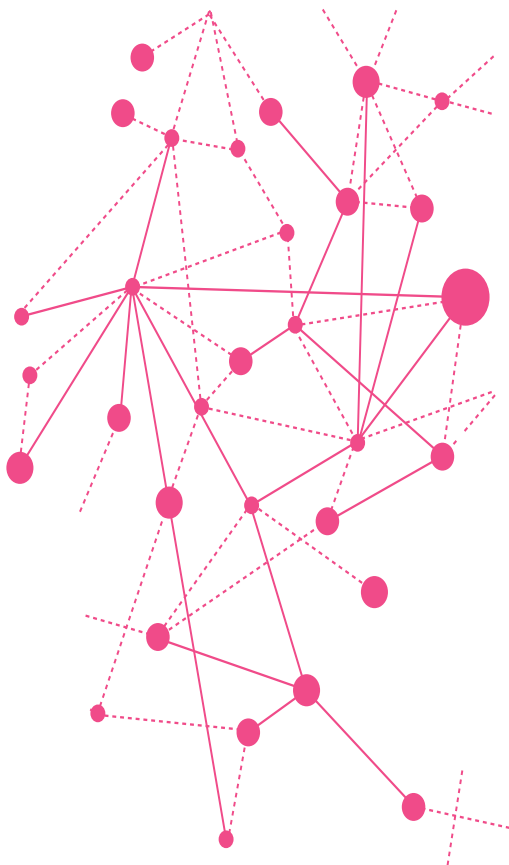
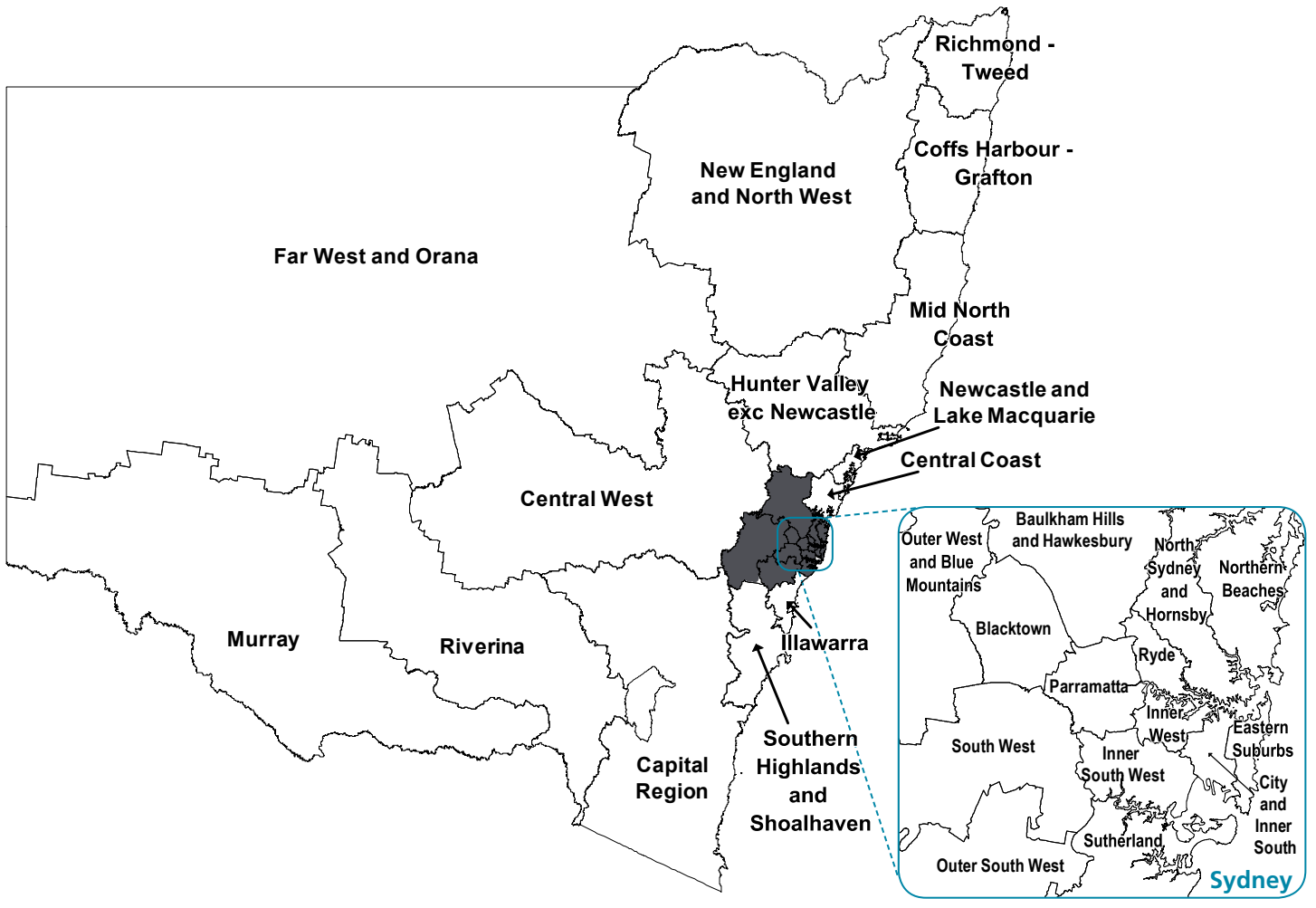
16. Colleges

The secondary schools in some areas have been transformed into colleges in order to provide broader opportunities and better facilities for students. A college is the amalgamation of all the secondary schools within a specific area. Each former secondary school has become a campus of their college. A senior college campus is generally for students in Years 11 and 12 but in some cases, may include Year 10 students. The colleges have formed cooperative ventures with TAFE Institutes and universities. They offer a wide range of options from specialist senior Higher School Certificate courses to school re-entry courses.

17. The Australian Bureau of Statistics (ABS) Statistical Area 4

2013 represents a transition year from the DEC regional structure to the new principal networks. From 2013 onwards aggregate geographical data will be reported by ABS statistical area 4 geographical boundaries.

Refer to the map on the next page.



Contact Details

For more information about the Centre for Education Statistics and Evaluation, please contact us:

E cese@det.nsw.edu.au

W www.cese.nsw.gov.au

Centre for Education Statistics and Evaluation
Office of Education
GPO Box 33
Sydney NSW 2001
Australia
T 02 9561 8000
E cese@det.nsw.edu.au
www.cese.nsw.gov.au

© August 2014
NSW Department of Education and Communities



**Education &
Communities**
Office of Education

