



In Brief

Midyear Census 2000

Strategic Information and Planning Directorate, New South Wales Department of Education and Training

ISSN 1039-0391

INTRODUCTION

In Brief summarises the results of the census of students in NSW government schools undertaken on Friday, 4th August 2000, and the census of NSW non-government schools undertaken by the Commonwealth Department of Education, Science and Training.

NSW GOVERNMENT SCHOOLS

Primary schools	1,630
Separate Infants schools	18
Central schools	62
Community schools	3
High schools	393
Schools for specific purposes (SSPs)	98
Environmental education centres	23
Total government schools	2,227

Preschools	
Attached to primary/infants schools	77
Separate preschools	1
Total preschools	78

NSW NON-GOVERNMENT SCHOOLS

Primary schools	535
Secondary schools	141
Primary/secondary schools	192
Special schools	33
Total non-government schools	901

FULL-TIME EQUIVALENT (FTE) ENROLMENTS IN NSW GOVERNMENT SCHOOLS

Primary enrolments	454,363.0
Secondary enrolments	303,681.0
SSP enrolments	3,792.0
Total enrolments	761,836.0

Aboriginal and Torres Strait Islander Students	
Total A&TSI enrolments	29,464.7
Percent A&TSI enrolments	3.9%

Part-time Students	
Number of part-time students	3,638
FTE enrolments	2,213.1

Preschool Students	
Number of preschool students	4,023
FTE enrolments	2,329.2

TABLE 1 ENROLMENTS (FTE) IN NSW GOVERNMENT SCHOOLS, 1952-2000

- Total full-time equivalent enrolments decreased by 3,496 from 765,332.1 in 1999 (0.5 percent).
- Total primary enrolments rose by 909 from 453,454.0 in 1999. This represents a 0.2 percent increase.
- Total secondary enrolments fell by 4,435 from 308,116.1 representing a 1.4 percent decrease.

TABLE 2 AND FIGURE 1 ENROLMENTS (FTE) BY DISTRICT AND YEAR OF SCHOOLING IN NSW GOVERNMENT SCHOOLS, MIDYEAR 2000

- Central Coast District enrolled the most students, with 32,373.9 FTE enrolments.
- Campbelltown District enrolled the most primary students (19,578) and Fairfield enrolled the most secondary students (14,216.1).
- Deniliquin District had the fewest students, with 5,215.3 FTE enrolments.
- As in 1999, Liverpool District experienced the greatest increase in enrolments, up by 889.1 enrolments (3.0 percent).
- The greatest decrease in enrolments occurred in Tamworth District with 464.4 fewer enrolments (3.2 percent) than 1999.
- The Kindergarten intake in 2000 was 65,405, down by 104 (0.2 percent) from 66,509 in 1999.
- Year 7 enrolments totalled 54,061 representing 88.7 percent of the 1999 Year 6 enrolment. In 1999 and 1998, the percentages were 89.6 and 90.4 respectively.

TABLE 3 AND FIGURE 2 ENROLMENTS (FTE) OF ABORIGINAL AND TORRES STRAIT ISLANDER STUDENTS BY DISTRICT AND YEAR OF SCHOOLING IN NSW GOVERNMENT SCHOOLS, MIDYEAR 2000

- Enrolments of Indigenous students increased by 4.7 percent from 28,154.6 in 1999.
- Aboriginal and Torres Strait Islander students represented 3.9 percent of all enrolments.
- Dubbo District had the greatest number of Aboriginal students, with 2,659.7 FTE enrolments.
- Moree District had the greatest proportion of Aboriginal students, with 29.2 percent of all enrolments.

TABLE 4 AND FIGURE 3
APPARENT RETENTION IN NSW GOVERNMENT SCHOOLS,
1979-2000

- Apparent retention from Year 7 to Year 12 was 63.8 percent in 1999 to 63.6 percent in 2000. This represents a decrease of 0.2 percentage points since 1999.
- This decrease follows three years of increasing retention rates following four years of decreasing retention rates.
- The Year 7 to 12 rate decreased 1.6 points for males and rose 0.6 for females.
- The Year 7 to 11 rate fell from 76.3 percent in 1999 to 75.2 percent in 2000.
- The Year 7 to 10 rate declined from 95.2 in 1999 to 94.6 in 2000.

TABLE 5
ENROLMENTS (FTE) BY YEAR OF SCHOOLING IN NSW NON-
GOVERNMENT SCHOOLS, MIDYEAR 2000

Primary enrolments	172,548.3
Secondary enrolments	161,266.5
SSP enrolments	1,107.6
Total enrolments	334,922.4

- Total enrolment in NSW non-government schools increased by 8,247 or 2.5 percent since 1999.
- Total primary enrolments increased by 4,419.4 (2.6 percent).
- Total secondary enrolments increased by 3,820.7 (2.4 percent).
- Total enrolments in special schools increased by 7.

TABLE 6 AND FIGURE 4
ENROLMENTS (FTE) IN NSW GOVERNMENT AND NON-
GOVERNMENT SCHOOLS, 1901-2000

- Enrolments in non-government schools represented 30.5 percent of all enrolments in NSW schools, compared with 29.9 percent in 1999.
- The proportion of enrolments in government decreased by 0.6 percent after falls of 0.5 and 0.4 percent in the preceding two years and a consistent trend down since the late 1970s.

TABLE 7
HEAD COUNT AND FULL-TIME EQUIVALENCE (FTE) OF PART-TIME
STUDENTS IN NSW GOVERNMENT SCHOOLS BY DISTRICT AND
YEAR OF SCHOOLING, MIDYEAR 2000

- The number of part-time students increase by 9.5 percent from 3,323 in 1999 to 3,638. This follows rises of 9.7 percent in 1999 and 37.4 percent in 1998.
- The FTE enrolments of part-time students increased by 2.3 percent from 2,163.1 in 1999 to 2,213.1 in 2000. The FTE has risen 9.5 percent in 1999 and 57.3 percent in 1998.

TABLE 8
HEAD COUNT AND FULL-TIME EQUIVALENCE OF STUDENTS IN
NSW GOVERNMENT PRESCHOOLS BY DISTRICT, MIDYEAR
2000

- Enrolments in government preschools rose by 0.2 percent to 4,023 from 4,015 in 1999.
- FTE enrolments in government preschools increased by 3.0 percent to 2,329.2.
- Indigenous preschool enrolments rose from 5.9 percent of FTE enrolments in 1999 to 7 percent in 2000.
- Mount Druitt District had the greatest number of students (541) FTE (298.0) in government preschools.

FURTHER INFORMATION

Additional information about schools and students in New South Wales will be available in *Statistical Bulletin: Schools and Students in New South Wales, 2001*.

Statistical publications produced by the Department of Education and Training can be obtained on the Internet at:

http://www.det.nsw.edu.au/reports_stats/stats

For further information regarding school and student statistics, please contact:

School Statistics Unit
 Strategic Information and Planning Directorate
 Telephone: 02 9561 8342
 Facsimile: 02 9561 8055

Table 1. Enrolments (FTE) in NSW Government Schools, 1952-2000

Year	Primary	Secondary	SSP	Total
1952	335,902	94,611		430,513
1953	335,220	100,098		455,318
1954	370,727	103,873		474,600
1955	387,516	109,034		496,550
1956	401,163	117,211		518,374
1957	414,692	125,289		539,981
1958	425,932	135,514		561,446
1959	433,375	146,653		580,028
1960	435,686	159,969		595,655
1961	441,366	169,517		610,883
1962	445,154	178,204		623,358
1963	444,252	181,999		626,251
1964	449,342	184,075		633,417
1965	457,158	196,273		653,431
1966	468,382	204,103		672,485
1967	479,605	221,184		700,789
1968	489,718	236,901		726,619
1969	497,373	248,442		745,815
1970	503,547	257,874		761,421
1971	504,110	267,603		771,713
1972	502,398	277,751		780,149
1973	495,112	281,988		777,100
1974	490,929	286,931		777,860
1975	490,769	298,357		789,126
1976	496,314	303,409		799,723
1977	506,661	303,049		809,710
1978	512,791	299,149		811,940
1979	516,807	290,795		807,602
1980	515,769	283,352		799,121
1981	507,094	283,481		790,575
1982	495,207	287,077		782,284
1983	477,811	300,793		778,604
1984	454,073	311,491	5,360	770,924
1985	438,953	316,650	5,414	761,017
1986	431,503	318,353	5,401	755,257
1987	431,403	318,657	5,024	755,084
1988	434,811	318,484	4,626	757,921
1989	434,098	310,765	4,400	749,263
1990	434,814	304,006	4,366	743,186
1991	438,218	304,087	4,112	746,417
1992	444,059	308,752	4,041	756,852
1993	445,238.0	308,909.2	3,901.0	758,048.2
1994	445,599.0	306,716.6	3,798.0	756,113.6
1995	446,722.0	305,395.6	3,789.0	755,906.6
1996	450,465.0	306,823.3	3,749.0	761,037.3
1997	451,560.0	308,922.7	3,690.0	764,172.7
1998	452,565.0	309,136.7	3,673.0	765,374.7
1999	453,454.0	308,116.1	3,762.0	765,332.1
2000	454,363.0	303,681.0	3792.0	761,836.0

Notes: Since 1993 some students have enrolled part-time. All enrolments are reported in full-time equivalent units (FTEs) and include full-time and part-time students.

Until 1984 students enrolled in schools for specific purposes (SSPs) are included in primary and secondary enrolment data, although until 1962 some of these students are not included at all.

Table 2. Enrolments (FTE) by District and Year of Schooling in NSW Government Schools, Midyear 2000

District	Primary								SSP	
	Kinder	Year 1	Year 2	Year 3	Year 4	Year 5	Year 6	Support	Total	Total
Albury	940	940	929	877	972	877	871	24	6430	73
Armidale	754	787	770	776	808	755	796	69	5515	7
Bankstown	1840	1814	1693	1684	1647	1700	1629	194	12201	123
Batemans Bay	1176	1197	1246	1252	1325	1241	1269	59	8765	9
Bathurst	925	984	929	937	977	959	899	79	6689	61
Blacktown	2013	2070	2002	1977	2028	1906	1797	227	14020	37
Bondi	1406	1408	1404	1447	1406	1329	1255	108	9763	74
Broken Hill	444	466	477	456	479	456	515	26	3319	0
Campbelltown	2931	2846	2815	2715	2699	2677	2611	284	19578	243
Central Coast	2734	2733	2838	2785	2846	2812	2585	194	19527	231
Clarence/Coffs Harbour	1326	1408	1455	1443	1452	1580	1551	82	10297	17
Deniliquin	429	439	455	481	444	470	424	12	3154	0
Dubbo	1083	1052	1038	1024	987	998	1015	185	7382	15
Fairfield	2443	2439	2358	2374	2286	2240	2374	255	16769	208
Granville	2169	2094	2155	2006	1963	1886	1956	185	14414	135
Griffith	709	692	673	681	702	667	661	59	4844	65
Hornsby	2124	2193	2290	2261	2423	2402	2369	60	16122	167
Lake Macquarie	2535	2599	2551	2532	2425	2395	2315	161	17513	53
Lismore	862	968	950	997	950	967	1026	72	6792	46
Liverpool	2794	2638	2668	2569	2520	2365	2303	284	18141	420
Maitland	1683	1636	1637	1569	1566	1585	1492	123	11291	39
Moree	639	621	607	594	585	604	557	71	4278	0
Mount Druitt	2653	2613	2607	2445	2499	2393	2295	321	17826	213
Newcastle	1833	1783	1758	1709	1819	1811	1741	121	12575	123
Northern Beaches	2522	2516	2315	2375	2416	2183	2069	81	16477	96
Orange	1066	1074	1091	1018	1058	1094	994	98	7493	54
Parramatta	2073	2069	2074	1990	2168	2001	1950	160	14485	190
Penrith	2188	2133	2098	2094	2155	1991	2003	222	14884	143
Port Jackson	1660	1618	1602	1525	1478	1458	1470	70	10881	68
Port Macquarie	1144	1156	1204	1225	1225	1281	1309	120	8664	0
Queanbeyan	1084	1044	1153	1063	1036	1096	985	112	7573	41
Ryde	2378	2248	2277	2368	2213	2004	1966	97	15551	93
Shellharbour	2056	2228	2125	2159	2121	2046	2014	166	14915	137
St George	1907	1741	1768	1668	1696	1606	1625	135	12146	198
Sutherland	1993	2016	2022	2109	2073	2128	2117	98	14556	127
Tamworth	1097	1168	1232	1154	1188	1198	1090	113	8240	46
Taree	1522	1571	1598	1620	1599	1571	1526	89	11096	0
Tweed Heads/Ballina	1276	1317	1298	1395	1346	1418	1337	91	9478	0
Wagga Wagga	1075	1036	1113	1090	1017	1083	1061	74	7549	94
Wollongong	1919	1987	1884	1845	1803	1849	1733	150	13170	146
State	65,405	65,342	65,159	64,289	64,400	63,082	61,555	5,131	454,363	3,792

Notes: Students in distance education and opportunity classes (OC) are included with their appropriate grade levels.
Students enrolled at the Distance Education Support Unit are included with secondary support classes in Port Jackson district.

Table 2. Enrolments (FTE) by District and Year of Schooling in NSW Government Schools, Midyear 2000

District	Secondary							District	
	Year 7	Year 8	Year 9	Year 10	Year 11	Year 12	Support	Total	Total
Albury	918.0	904.0	903.0	898.0	686.5	518.2	44.0	4,871.7	11,374.7
Armidale	819.0	778.0	781.0	766.0	566.7	541.0	65.0	4,316.7	9,838.7
Bankstown	1,239.0	1,234.0	1,305.0	1,555.0	1,217.7	1,008.0	364.0	7,922.7	20,246.7
Batemans Bay	1,167.0	1,192.0	1,159.0	1,083.0	853.8	646.0	53.0	6,153.8	14,927.8
Bathurst	940.0	895.0	909.0	889.0	656.5	527.6	64.0	4,881.0	11,631.0
Blacktown	1,457.0	1,346.0	1,405.0	1,320.0	960.2	738.3	124.0	7,350.5	21,407.5
Bondi	1,098.0	1,183.0	1,271.0	1,360.0	1,167.4	1,078.4	69.0	7,226.8	17,063.8
Broken Hill	460.0	437.0	495.0	398.0	336.7	238.0	64.0	2,428.7	5,747.7
Campbelltown	2,046.0	2,178.0	2,153.0	2,079.0	1,383.7	1,207.6	233.0	11,280.3	31,101.3
Central Coast	2,453.0	2,485.0	2,327.0	2,201.0	1,593.5	1,304.3	252.0	12,615.9	32,373.9
Clarence/Coffs Harbour	1,436.0	1,466.0	1,439.0	1,387.0	1,146.8	955.2	78.0	7,908.0	18,222.0
Deniliquin	401.0	400.0	378.0	379.0	282.0	221.3	0.0	2,061.3	5,215.3
Dubbo	986.0	980.0	931.0	885.0	692.3	628.8	133.0	5,236.1	12,633.1
Fairfield	2,192.0	2,280.0	2,367.0	2,436.0	2,296.7	2,008.3	636.0	14,216.1	31,193.1
Granville	1,295.0	1,252.0	1,353.0	1,396.0	1,212.1	1,085.5	166.0	7,759.7	22,308.7
Griffith	624.0	648.0	673.0	614.0	453.7	335.9	19.0	3,367.6	8,276.6
Hornsby	2,042.0	2,090.0	2,088.0	2,103.0	1,943.4	1,729.5	14.0	12,009.9	28,298.9
Lake Macquarie	2,007.0	2,027.0	2,004.0	1,898.0	1,266.1	969.4	178.0	10,349.4	27,915.4
Lismore	912.0	888.0	912.0	898.0	708.6	616.6	65.0	5,000.1	11,838.1
Liverpool	2,138.0	2,142.0	2,230.0	1,981.0	1,636.9	1,262.2	475.0	11,865.1	30,426.1
Maitland	1,368.0	1,443.0	1,365.0	1,267.0	894.2	697.4	99.0	7,133.6	18,463.6
Moree	531.0	520.0	513.5	486.2	302.8	217.7	85.0	2,656.3	6,934.3
Mount Druitt	1,713.0	1,781.0	1,752.0	1,603.0	1,447.8	1,183.9	459.0	9,939.6	27,978.6
Newcastle	1,897.0	1,962.0	1,842.0	1,733.0	1,436.1	1,290.2	94.0	10,254.3	22,952.3
Northern Beaches	1,425.0	1,522.0	1,479.0	1,521.0	1,437.7	1,341.8	69.0	8,795.5	25,368.5
Orange	887.0	936.0	889.0	866.0	656.3	534.6	125.0	4,893.9	12,440.9
Parramatta	1,977.0	1,930.0	1,998.0	1,929.0	1,601.2	1,515.1	206.0	11,156.3	25,831.3
Penrith	1,650.0	1,757.0	1,818.0	1,737.0	1,142.9	1,037.9	178.0	9,320.9	24,347.9
Port Jackson	886.0	971.0	969.0	1,005.0	986.3	844.7	415.0	6,077.0	17,026.0
Port Macquarie	1,206.0	1,223.0	1,224.0	1,135.0	813.4	641.5	117.0	6,359.8	15,023.8
Queanbeyan	858.0	802.0	870.0	839.0	559.5	507.7	102.0	4,538.2	12,152.2
Ryde	1,305.0	1,383.0	1,450.0	1,477.0	1,590.5	1,573.7	282.0	9,061.2	24,705.2
Shellharbour	1,875.0	1,917.0	1,906.0	1,854.0	1,095.0	969.8	154.0	9,770.8	24,822.8
St George	1,526.0	1,596.0	1,566.0	1,630.0	1,529.3	1,361.7	208.0	9,417.0	21,761.0
Sutherland	2,070.0	1,985.0	2,080.0	1,992.0	1,580.8	1,450.8	71.0	11,229.7	25,912.7
Tamworth	1,093.0	1,133.0	1,076.0	1,065.0	738.1	647.0	155.0	5,907.1	14,193.1
Taree	1,407.0	1,470.0	1,327.0	1,375.0	865.4	728.7	113.0	7,286.1	18,382.1
Tweed Heads/Ballina	1,264.0	1,418.0	1,318.0	1,296.0	988.6	834.2	53.0	7,171.8	16,649.8
Wagga Wagga	914.0	949.0	921.0	912.0	697.9	605.6	92.0	5,091.5	12,734.5
Wollongong	1,579.0	1,564.0	1,587.0	1,573.0	1,277.0	1,034.1	185.0	8,799.0	22,115.0
State	54,061.0	55,067.0	55,033.5	53,821.2	42,702.1	36,638.2	6,358.0	303,681.0	761,836.0

Notes: All enrolments are reported in full-time equivalents (FTEs) and include full-time and part-time students.
See Table 7 for data on part-time students.
Students in distance education are included with their appropriate grade levels. Students enrolled at the Distance Education Support Unit are included with secondary support classes in Port Jackson district.
Students enrolled in Intensive English Centres (1,692.0 FTE) are included with secondary support classes.

Table 3. Enrolments (FTE) of Aboriginal and Torres Strait Islander Students by District and Year of Schooling in NSW Government Schools, Midyear 2000

District	Primary								SSP	
	Kinder	Year 1	Year 2	Year 3	Year 4	Year 5	Year 6	Support	Total	Total
Albury	32	33	28	34	32	27	25	3	214	4
Armidale	91	77	81	87	80	75	76	19	586	0
Bankstown	23	26	17	21	17	26	18	2	150	2
Batemans Bay	75	76	71	61	70	75	61	7	496	0
Bathurst	43	39	36	53	28	47	38	4	288	4
Blacktown	50	50	51	61	60	56	38	17	383	3
Bondi	39	39	53	40	37	43	28	4	283	8
Broken Hill	77	71	94	85	79	73	86	9	574	0
Campbelltown	100	109	97	88	85	77	64	27	647	32
Central Coast	68	61	72	58	86	67	72	6	490	27
Clarence/Coffs Harbour	107	81	101	86	85	103	77	11	651	10
Deniliquin	28	21	26	18	24	28	22	1	168	0
Dubbo	291	264	233	222	207	228	194	98	1737	14
Fairfield	29	29	27	25	24	29	21	5	189	16
Granville	21	15	16	14	16	12	18	0	112	4
Griffith	70	60	67	44	67	42	48	16	414	10
Hornsby	6	4	8	2	8	12	8	1	49	0
Lake Macquarie	104	113	100	101	96	77	105	15	711	3
Lismore	88	93	76	88	75	82	76	14	592	8
Liverpool	72	65	66	66	56	51	82	18	476	28
Maitland	74	64	66	59	53	58	64	13	451	3
Moree	214	194	192	184	184	156	164	45	1333	0
Mount Druitt	191	156	178	153	152	141	133	55	1159	21
Newcastle	49	56	48	49	55	61	67	6	391	5
Northern Beaches	2	4	5	7	8	4	4	0	34	0
Orange	106	99	100	83	85	93	79	21	666	6
Parramatta	27	21	31	22	23	16	19	4	163	3
Penrith	63	65	72	73	54	57	52	18	454	15
Port Jackson	55	75	72	71	77	58	63	2	473	21
Port Macquarie	142	94	108	100	92	100	120	31	787	0
Queanbeyan	38	29	34	26	22	29	26	5	209	0
Ryde	3	5	6	2	3	2	4	0	25	0
Shellharbour	109	98	98	106	102	80	84	26	703	8
St George	8	4	9	12	10	12	8	2	65	9
Sutherland	10	10	9	20	11	13	19	6	98	4
Tamworth	145	135	153	131	117	119	117	20	937	7
Taree	94	101	106	85	83	85	81	18	653	0
Tweed Heads/Ballina	92	88	82	76	75	73	65	12	563	0
Wagga Wagga	76	75	66	58	50	59	66	6	456	18
Wollongong	53	53	63	57	59	49	47	12	393	6
State	2,965	2,752	2,818	2,628	2,547	2,495	2,439	579	19,223	299
As percent of year	4.5%	4.2%	4.3%	4.1%	4.0%	4.0%	4.0%	11.3%	4.2%	7.9%

Notes: Students in distance education and support classes (OC) are included with their appropriate grade levels.
Students enrolled at the Distance Education Support Unit are included with secondary support classes in Port Jackson district.

Table 3. Enrolments (FTE) of Aboriginal and Torres Strait Islander Students by District and Year of Schooling in NSW Government Schools, Midyear 2000

	Secondary								District	As % of
District	Year 7	Year 8	Year 9	Year 10	Year 11	Year 12	Support	Total	Total	district
Albury	33.0	36.0	18.0	12.0	5.0	4.0	3.0	111.0	329.0	2.9%
Armidale	88.0	75.0	58.0	43.0	25.0	22.8	14.0	325.8	911.8	9.3%
Bankstown	13.0	11.0	14.0	10.0	8.0	4.0	4.0	64.0	216.0	1.1%
Batemans Bay	76.0	67.0	60.0	48.0	18.8	22.0	8.0	299.8	795.8	5.3%
Bathurst	24.0	42.0	32.0	26.0	9.0	9.9	5.0	147.9	439.9	3.8%
Blacktown	51.0	48.0	48.0	35.0	17.0	7.7	3.0	209.7	595.7	2.8%
Bondi	41.0	43.0	40.0	24.0	23.0	20.0	3.0	194.0	485.0	2.8%
Broken Hill	65.0	62.0	55.0	45.0	20.0	8.0	25.0	280.0	854.0	14.9%
Campbelltown	52.0	70.0	55.0	50.0	19.0	19.5	17.0	282.5	961.5	3.1%
Central Coast	63.0	68.0	56.0	40.0	26.3	22.3	9.0	284.6	801.6	2.5%
Clarence/Coffs Harbour	74.0	78.0	73.0	64.0	33.3	25.3	11.0	358.5	1,019.5	5.6%
Deniliquin	13.0	14.0	17.0	17.0	5.0	1.0	0.0	67.0	235.0	4.5%
Dubbo	209.0	185.0	190.0	121.0	69.6	62.1	72.0	908.7	2,659.7	21.1%
Fairfield	25.0	27.0	22.0	17.0	8.0	4.8	1.0	104.8	309.8	1.0%
Granville	9.0	12.0	6.0	5.0	5.0	1.0	1.0	39.0	155.0	0.7%
Griffith	44.0	45.0	44.0	33.0	12.0	13.0	8.0	199.0	623.0	7.5%
Hornsby	3.0	5.0	5.0	4.0	4.0	3.0	0.0	24.0	73.0	0.3%
Lake Macquarie	85.0	75.0	67.0	52.0	26.5	22.7	19.0	347.2	1,061.2	3.8%
Lismore	76.0	60.0	56.0	48.0	22.6	14.3	7.0	283.9	883.9	7.5%
Liverpool	46.0	56.0	48.0	41.0	19.7	14.4	18.0	243.1	747.1	2.5%
Maitland	55.0	42.0	37.0	22.0	20.4	12.0	4.0	192.4	646.4	3.5%
Moree	157.0	153.0	140.0	110.0	51.5	22.3	55.0	688.8	2,021.8	29.2%
Mount Druitt	118.0	92.0	82.0	66.0	43.0	27.9	39.0	467.9	1,647.9	5.9%
Newcastle	64.0	55.0	56.0	46.0	29.5	17.2	6.0	273.6	669.6	2.9%
Northern Beaches	9.0	11.0	3.0	7.0	2.1	4.6	1.0	37.7	71.7	0.3%
Orange	91.0	84.0	79.0	60.0	32.0	16.2	10.0	372.2	1,044.2	8.4%
Parramatta	19.0	14.0	15.0	9.0	5.0	3.0	3.0	68.0	234.0	0.9%
Penrith	49.0	29.0	43.0	26.0	19.8	12.0	10.0	188.8	657.8	2.7%
Port Jackson	51.0	60.0	42.0	30.0	18.5	22.8	9.0	233.2	727.2	4.3%
Port Macquarie	105.0	93.0	74.0	60.0	32.0	21.9	23.0	408.9	1,195.9	8.0%
Queanbeyan	34.0	21.0	26.0	20.0	10.0	6.8	7.0	124.8	333.8	2.7%
Ryde	4.0	4.0	4.0	2.0	2.0	2.7	1.0	19.7	44.7	0.2%
Shellharbour	75.0	83.0	69.0	62.0	25.9	20.8	14.0	349.8	1,060.8	4.3%
St George	10.0	10.0	10.0	5.0	5.0	4.0	0.0	44.0	118.0	0.5%
Sutherland	21.0	22.0	15.0	5.0	8.8	4.7	1.0	77.5	179.5	0.7%
Tamworth	118.0	112.0	82.0	88.0	55.5	29.9	43.0	528.4	1,472.4	10.4%
Taree	82.0	92.0	70.0	58.0	20.0	12.0	12.0	346.0	999.0	5.4%
Tweed Heads/Ballina	65.0	64.0	58.0	63.0	31.0	16.8	15.0	312.8	875.8	5.3%
Wagga Wagga	41.0	55.0	37.0	34.0	17.0	15.7	8.0	207.7	681.7	5.4%
Wollongong	44.0	42.0	48.0	43.0	21.2	15.8	12.0	226.0	625.0	2.8%
State	2,302.0	2,217.0	1,954.0	1,551.0	827.0	590.6	501.0	9,942.7	29,464.7	3.9%
As percent of year	4.3%	4.0%	3.6%	2.9%	1.9%	1.6%	7.9%	3.3%	3.9%	

Notes: All enrolments are reported in full-time equivalent units (FTEs) and include full-time and part-time students. Students in distance education are included with their appropriate grade levels. Students enrolled at the Distance Education Support Unit are included with secondary support classes in Port Jackson district.

Table 4. Apparent Retention in NSW Government Schools, 1979-2000

Enrolments (FTE)																					
Year	Year 7			Year 8			Year 9			Year 10			Year 11			Year 12					
	Male	Female	Total	Male	Female	Total	Male	Female	Total	Male	Female	Total	Male	Female	Total	Male	Female	Total			
1979	31,672.0	30,320.0	61,992.0	32,360.0	30,540.0	62,900.0	31,270.0	29,883.0	61,153.0	28,636.0	27,735.0	56,371.0	11,559.0	12,766.0	24,325.0	10,230.0	11,250.0	21,480.0			
1980	31,675.0	30,261.0	61,936.0	31,779.0	30,333.0	62,112.0	30,621.0	29,335.0	59,956.0	27,416.0	26,575.0	53,991.0	10,882.0	12,197.0	23,079.0	9,134.0	10,482.0	19,616.0			
1981	32,540.0	31,103.0	63,643.0	31,727.0	30,250.0	61,977.0	30,493.0	29,465.0	59,958.0	26,988.0	26,312.0	53,300.0	10,325.0	12,119.0	22,444.0	8,864.0	10,110.0	18,974.0			
1982	33,007.0	31,367.0	64,374.0	32,577.0	31,181.0	63,758.0	30,637.0	29,531.0	60,168.0	27,112.0	26,605.0	53,717.0	10,917.0	12,511.0	23,428.0	8,371.0	9,860.0	18,251.0			
1983	34,980.0	33,392.0	68,372.0	32,933.0	31,259.0	64,192.0	31,725.0	30,538.0	62,263.0	27,974.0	27,050.0	55,024.0	13,277.0	14,057.0	27,334.0	9,430.0	10,723.0	20,153.0			
1984	35,659.0	34,004.0	69,663.0	35,014.0	33,320.0	68,334.0	32,163.0	30,677.0	62,840.0	28,960.0	28,080.0	57,040.0	13,780.0	14,656.0	28,436.0	10,711.0	11,649.0	22,360.0			
1985	33,997.0	32,034.0	66,031.0	35,696.0	33,909.0	69,605.0	34,205.0	32,826.0	67,031.0	29,481.0	28,264.0	57,745.0	15,133.0	15,727.0	30,860.0	10,605.0	11,765.0	22,390.0			
1986	31,921.0	29,953.0	61,874.0	34,008.0	32,067.0	66,075.0	34,895.0	33,313.0	68,208.0	31,269.0	30,500.0	61,769.0	15,841.0	16,485.0	32,326.0	11,944.0	12,960.0	24,904.0			
1987	30,806.0	28,810.0	59,616.0	32,055.0	30,076.0	62,131.0	33,561.0	31,657.0	65,218.0	32,532.0	31,284.0	63,816.0	18,286.0	19,454.0	37,740.0	12,787.0	13,915.0	26,702.0			
1988	29,385.0	27,848.0	57,233.0	30,866.0	29,052.0	59,918.0	31,864.0	29,871.0	61,735.0	31,191.0	30,084.0	61,275.0	20,978.0	22,192.0	43,170.0	14,876.0	16,498.0	31,374.0			
1989	28,726.0	27,124.0	55,850.0	29,263.0	27,910.0	57,173.0	30,504.0	28,844.0	59,348.0	29,661.0	28,367.0	58,028.0	20,117.0	22,079.0	42,196.0	16,061.0	18,112.0	34,173.0			
1990	28,234.0	26,663.0	54,897.0	28,627.0	27,053.0	55,680.0	29,053.0	27,688.0	56,741.0	28,747.0	27,549.0	56,296.0	20,116.0	21,890.0	42,006.0	15,738.0	18,197.0	33,935.0			
1991	27,943.0	26,871.0	54,814.0	28,253.0	26,863.0	55,116.0	28,544.0	27,046.0	55,590.0	27,748.0	26,657.0	54,405.0	21,842.0	22,685.0	44,527.0	16,305.0	18,150.0	34,470.0			
1992	28,176.0	26,860.0	55,036.0	28,150.0	27,011.0	55,161.0	28,380.0	27,069.0	55,449.0	27,606.0	26,307.0	53,913.0	22,448.0	23,330.0	45,778.0	18,325.0	20,044.0	38,369.0			
1993	29,193.0	27,649.0	56,842.0	28,199.0	26,890.0	55,089.0	28,018.0	27,009.0	55,027.0	27,062.4	26,155.0	53,217.4	22,465.4	23,276.3	45,741.7	18,189.8	19,932.3	38,122.1			
1994	29,639.0	27,993.0	57,632.0	29,101.0	27,622.0	56,723.0	27,762.0	26,668.0	54,430.0	26,646.0	25,805.9	52,451.9	20,960.5	22,437.6	43,398.1	17,573.4	19,537.6	37,117.6			
1995	29,263.8	28,326.8	57,590.6	29,530.0	27,854.9	57,384.9	28,528.5	27,498.6	56,027.1	26,267.3	25,469.3	51,736.7	19,815.7	21,650.3	41,466.0	16,709.3	19,089.1	35,798.4			
1996	29,023.6	27,770.9	56,794.5	29,250.2	28,284.4	57,534.6	29,258.3	27,579.7	56,838.0	27,236.7	26,329.7	53,566.4	19,768.1	21,259.3	41,227.4	16,157.3	18,556.2	34,713.5			
1997	29,077.3	27,796.0	56,873.3	29,089.5	27,903.8	56,993.3	28,987.4	28,160.6	57,148.0	27,956.1	26,573.9	54,530.0	20,604.7	22,274.0	42,878.7	16,147.0	18,495.4	34,642.3			
1998	28,245.0	27,187.0	55,432.0	29,097.0	27,815.0	56,912.0	28,765.0	27,638.0	56,403.0	27,542.0	27,119.0	54,661.0	20,967.6	22,551.2	43,518.8	16,757.0	19,324.9	36,081.9			
1999	28,156.2	26,875.0	55,031.2	28,249.0	27,131.0	55,380.0	28,736.2	27,590.2	56,326.3	27,399.4	26,692.2	54,091.6	20,708.3	23,208.2	43,916.5	17,208.8	19,565.6	36,774.4			
2000	27,497.0	26,584.0	54,061.0	28,119.0	26,948.0	55,067.0	27,954.0	27,079.5	55,033.5	27,365.2	26,456.0	53,821.2	20,380.0	22,322.1	42,702.1	16,680.8	19,957.5	36,638.2			
Apparent Retention (%)													Years 7-11						Years 7-12		
Year	Years 7-8			Years 7-9			Years 7-10			Years 7-11			Years 7-12								
	Male	Female	Total	Male	Female	Total	Male	Female	Total	Male	Female	Total	Male	Female	Total						
1979	99.93	100.03	99.97	94.30	95.67	94.96	82.41	84.70	83.52	32.39	38.27	35.23	28.52	33.36	30.87						
1980	100.34	100.04	100.19	94.56	96.08	95.30	82.68	85.08	83.84	31.32	37.25	34.19	25.60	31.42	28.41						
1981	100.16	99.96	100.07	96.28	97.18	96.72	83.34	86.18	84.72	31.14	38.80	34.85	25.51	30.87	28.11						
1982	100.11	100.25	100.18	96.72	97.59	97.15	85.60	87.75	86.65	33.71	40.98	37.24	25.24	31.63	28.34						
1983	99.78	99.66	99.72	97.50	98.18	97.83	88.32	89.39	88.84	41.92	46.36	44.09	29.12	35.12	32.03						
1984	100.10	99.78	99.94	97.44	97.80	97.62	89.00	90.28	89.62	43.50	48.43	45.91	33.82	38.42	36.07						
1985	100.10	99.72	99.92	97.78	98.30	98.04	89.32	90.11	89.70	46.51	50.56	48.49	36.15	38.94	36.15						
1986	100.03	100.10	100.07	97.86	97.97	97.91	89.39	91.34	90.34	47.99	52.56	50.22	36.71	41.67	39.13						
1987	100.42	100.41	100.42	98.72	98.82	98.77	91.23	92.00	91.61	52.28	58.26	55.20	38.74	44.36	41.48						
1988	100.19	100.84	100.51	99.82	99.73	99.78	91.75	93.91	92.80	58.83	65.26	61.97	42.53	49.41	45.89						
1989	99.58	100.22	99.90	99.02	100.12	99.55	92.92	94.71	93.78	59.17	68.92	63.90	45.04	53.26	49.05						
1990	99.66	99.74	99.70	98.87	99.43	99.14	93.32	95.62	94.43	63.02	73.08	67.89	46.29	56.81	51.39						
1991	100.07	100.75	100.40	99.37	99.71	99.53	94.43	95.72	95.06	70.90	78.74	74.69	51.08	61.81	56.28						
1992	100.74	100.52	100.63	100.52	101.52	101.01	96.10	96.99	96.53	76.39	83.78	79.99	59.49	69.57	64.36						
1993	100.08	100.11	100.10	100.27	100.51	100.39	95.85	98.09	96.94	78.21	85.81	81.90	61.90	71.58	66.61						
1994	99.68	99.90	99.79	98.53	99.29	98.90	95.36	96.04	95.69	74.24	84.15	79.05	61.18	72.06	66.46						
1995	99.63	99.51	99.57	97.72	99.46	98.57	93.23	94.82	94.01	70.91	80.57	75.65	59.18	71.59	65.21						
1996	99.95	99.85	99.90	98.72	98.52	98.62	93.30	95.23	94.24	70.16	79.89	74.91	57.82	69.06	63.33						
1997	100.23	100.48	100.35	99.06	99.41	99.23	94.32	94.93	94.62	70.58	80.56	75.43	57.31	68.86	62.94						
1998	100.07	100.07	100.07	99.11	99.52	99.31	94.12	95.74	94.91	70.42	80.56	75.51	57.40	69.89	63.48						
1999	100.01	99.79	99.91	98.83	99.26	99.04	94.40	96.12	95.24	70.76	81.93	76.26	58.06	69.89	63.81						
2000	99.87	100.27	100.07	98.97	99.60	99.28	94.11	95.18	94.63	70.22	80.38	75.19	57.00	70.45	63.62						

Note: All enrolments are reported in full-time equivalent units (FTEs), and include full-time and part-time students. Students enrolled in distance education classes are included with their appropriate grade levels.

Table 5. Enrolments (FTE) by Year of Schooling in NSW Non-government Schools, Midyear 2000

Year of Schooling	Male	Female	Total
Primary			
Kindergarten	12,630.8	12,410.0	25,040.8
Year 1	12,312.0	12,322.8	24,634.8
Year 2	12,562.6	11,937.0	24,499.6
Year 3	12,280.8	11,737.4	24,018.2
Year 4	12,327.4	12,127.5	24,454.9
Year 5	12,849.2	12,365.4	25,214.6
Year 6	12,617.0	11,808.8	24,425.8
Ungraded/Special Classes	148.6	111.0	259.6
Total Primary	87,728.4	84,819.9	172,548.3
Secondary			
Year 7	15,204.8	14,902.0	30,106.8
Year 8	14,980.0	14,403.9	29,383.9
Year 9	14,449.8	14,141.1	28,590.9
Year 10	13,978.0	13,790.1	27,768.1
Year 11	11,383.0	12,115.1	23,498.1
Year 12	10,437.6	11,360.1	21,797.7
Ungraded/Special Classes	76.0	45.0	121.0
Total Secondary	80,509.2	80,757.3	161,266.5
Special Schools	795.6	312.0	1,107.6
Total, All Students	169,033.2	165,889.2	334,922.4

Source: Commonwealth Department of Education, Science and Training.

Notes: All enrolments are reported in full-time equivalent units (FTEs), and include full-time and part-time students.

'Ungraded' refers to non-special students in regular schools who are not allocated to specific school years.

'Special Classes' refers to students in special/support classes in regular schools.

**Table 6. Enrolments (FTE) by in NSW Government and Non-government Schools
1901-2000**

Year	Government Schools		Non-government Schools		Total
	Enrolment	Percentage	Enrolment	Percentage	
1901	210,588	77.6%	60,837	22.4%	271,425
1911	221,810	78.3%	61,550	21.7%	283,360
1921	315,228	80.1%	78,460	19.9%	393,688
1931	387,881	80.8%	92,285	19.2%	480,166
1941	337,073	76.2%	105,319	23.8%	442,392
1951	405,906	75.3%	133,019	24.7%	538,925
1961	610,883	75.2%	201,147	24.8%	812,030
1971	771,713	77.6%	222,195	22.4%	993,908
1972	780,149	77.9%	221,400	22.1%	1,001,549
1973	777,100	77.9%	219,918	22.1%	997,018
1974	777,860	78.0%	219,100	22.0%	996,960
1975	789,126	78.3%	218,868	21.7%	1,007,994
1976	799,723	78.6%	218,348	21.4%	1,018,071
1977	809,710	78.7%	218,775	21.3%	1,028,485
1978	811,940	78.6%	220,763	21.4%	1,032,703
1979	807,602	78.2%	224,941	21.8%	1,032,543
1980	799,121	77.6%	230,384	22.4%	1,029,505
1981	790,575	76.9%	237,853	23.1%	1,028,428
1982	782,284	76.2%	245,007	23.8%	1,027,291
1983	778,604	75.6%	251,506	24.4%	1,030,110
1984	770,924	75.0%	257,599	25.0%	1,028,523
1985	761,017	74.2%	264,297	25.8%	1,025,314
1986	755,257	73.6%	270,745	26.4%	1,026,011
1987	755,084	73.2%	275,903	26.8%	1,031,004
1988	757,921	73.0%	280,609	27.0%	1,038,530
1989	749,263	72.5%	284,330	27.5%	1,033,593
1990	743,186	72.1%	287,437	27.9%	1,030,623
1991	746,417	72.0%	290,896	28.0%	1,037,313
1992	756,852	72.1%	293,376	27.9%	1,050,228
1993	758,048	72.0%	294,164	28.0%	1,052,212
1994	756,114	71.9%	296,157	28.1%	1,052,271
1995	755,907	71.5%	300,712	28.5%	1,056,619
1996	761,037	71.4%	305,383	28.6%	1,066,420
1997	764,173	71.0%	311,460	29.0%	1,075,633
1998	765,375	70.6%	318,305	29.4%	1,083,680
1999	765,332	70.1%	326,675	29.9%	1,092,007
2000	761,836	69.5%	334,922	30.5%	1,096,758

Source: Department of Education and Training; Official Yearbook of NSW; Australian Bureau of Statistics; and Commonwealth Department of Education, Science and Training.

Notes: Government and non-government school data for 1901-1961 include students in ACT schools.
From 1993 the table includes full-time and part-time students, reported in full-time equivalent units (FTEs).

Table 7. Head Count and Full-time Equivalence (FTE) of Part-time Students in NSW Government Schools by District and Year of Schooling, Midyear 2000

District	Years 7-10		Year 11		Year 12		Total	
	Students	FTE	Students	FTE	Students	FTE	Students	FTE
Albury	0	-	2	0.5	8	5.2	10	5.7
Armidale	0	-	15	10.7	31	24.0	46	34.7
Bankstown	0	-	32	11.7	29	21.0	61	32.7
Batemans Bay	0	-	69	20.8	22	15.0	91	35.8
Bathurst	0	-	31	14.5	38	24.6	69	39.1
Blacktown	0	-	5	4.2	28	21.3	33	25.5
Bondi	0	-	72	39.4	106	72.4	178	111.8
Broken Hill	0	-	23	6.7	6	5.0	29	11.7
Campbelltown	0	-	10	5.7	38	25.6	48	31.3
Central Coast	0	-	21	13.5	67	52.3	88	65.8
Clarence/Coffs Harbour	0	-	78	44.8	118	77.2	196	122.0
Deniliquin	0	-	0	-	11	7.3	11	7.3
Dubbo	0	-	62	19.3	26	13.8	88	33.1
Fairfield	0	-	35	16.7	69	54.3	104	71.0
Granville	0	-	44	11.1	51	42.5	95	53.6
Griffith	0	-	128	31.7	16	6.9	144	38.6
Hornsby	0	-	11	8.4	65	48.5	76	56.9
Lake Macquarie	0	-	58	38.1	138	107.4	196	145.5
Lismore	0	-	63	25.6	41	24.6	104	50.2
Liverpool	0	-	34	26.9	42	33.2	76	60.1
Maitland	0	-	15	10.2	39	30.4	54	40.6
Moree	4	0.7	32	10.9	56	18.7	92	30.3
Mount Druitt	0	-	24	17.8	54	41.9	78	59.7
Newcastle	0	-	40	24.1	77	59.2	117	83.3
Northern Beaches	0	-	7	4.7	68	48.8	75	53.5
Orange	0	-	52	15.3	25	14.6	77	29.9
Parramatta	0	-	13	10.2	59	47.1	72	57.3
Penrith	0	-	25	18.9	39	30.9	64	49.8
Port Jackson	0	-	31	17.3	76	55.7	107	73.0
Port Macquarie	0	-	17	11.4	45	32.5	62	43.9
Queanbeyan	0	-	17	8.5	38	26.7	55	35.2
Ryde	0	-	176	69.5	179	114.7	355	184.2
Shellharbour	0	-	11	6.0	58	38.8	69	44.8
St George	0	-	7	5.3	20	15.7	27	21.0
Sutherland	0	-	20	14.8	119	95.8	139	110.6
Tamworth	0	-	32	17.1	28	20.0	60	37.1
Taree	0	-	9	6.4	38	30.7	47	37.1
Tweed Heads/Ballina	0	-	19	13.6	58	44.2	77	57.8
Wagga Wagga	0	-	99	27.9	33	26.6	132	54.5
Wollongong	0	-	69	24.0	67	53.1	136	77.1
Total	4	0.7	1,508	684.2	2,126	1,528.2	3638	2,213.1

Table 8. Head Count and Full-time Equivalence (FTE) of Students in NSW Government Preschools by District, Midyear 2000

District	All Students		Aboriginal and Torres Strait Islander Students		
	Students	FTE	Students	FTE	% of Total
Albury	50	25.0	1	0.5	2.0%
Armidale	0	-	0	-	-
Bankstown	195	121.1	3	1.5	1.2%
Batemans Bay	0	-	0	-	-
Bathurst	0	-	0	-	-
Blacktown	258	129.0	5	2.5	1.9%
Bondi	187	150.9	5	3.1	2.1%
Broken Hill	29	25.0	17	17.0	68.0%
Campbelltown	152	76.1	8	4.0	5.3%
Central Coast	48	24.0	2	1.0	4.2%
Clarence/Coffs Harbour	0	-	0	-	-
Deniliquin	8	4.8	2	1.2	25.0%
Dubbo	82	74.0	7	4.2	5.7%
Fairfield	417	208.3	0	-	0.0%
Granville	120	60.0	0	-	0.0%
Griffith	0	-	0	-	-
Hornsby	0	-	0	-	-
Lake Macquarie	140	70.2	15	8.5	12.1%
Lismore	44	21.1	24	10.6	50.2%
Liverpool	203	113.5	19	19.0	16.7%
Maitland	79	39.5	5	2.5	6.3%
Moree	100	67.4	29	20.3	30.1%
Mount Druitt	541	298.0	28	16.5	5.5%
Newcastle	210	104.9	9	4.4	4.2%
Northern Beaches	0	-	0	-	-
Orange	0	-	0	-	-
Parramatta	229	114.5	4	2.0	1.7%
Penrith	126	63.0	3	1.5	2.4%
Port Jackson	335	294.2	13	12.6	4.3%
Port Macquarie	0	-	0	-	-
Queanbeyan	0	-	0	-	-
Ryde	0	-	0	-	-
Shellharbour	176	81.1	24	18.2	22.4%
St George	50	25.0	0	0.0	0.0%
Sutherland	0	-	0	-	-
Tamworth	0	-	0	-	-
Taree	0	-	0	-	-
Tweed Heads/Ballina	47	23.4	7	3.6	15.4%
Wagga Wagga	0	-	0	-	-
Wollongong	197	115.2	14	8.4	7.3%
State	4,023	2,329.2	244	163.1	7.0%

Figure 1. Government Enrolments by District and Level of Education, Midyear 2000

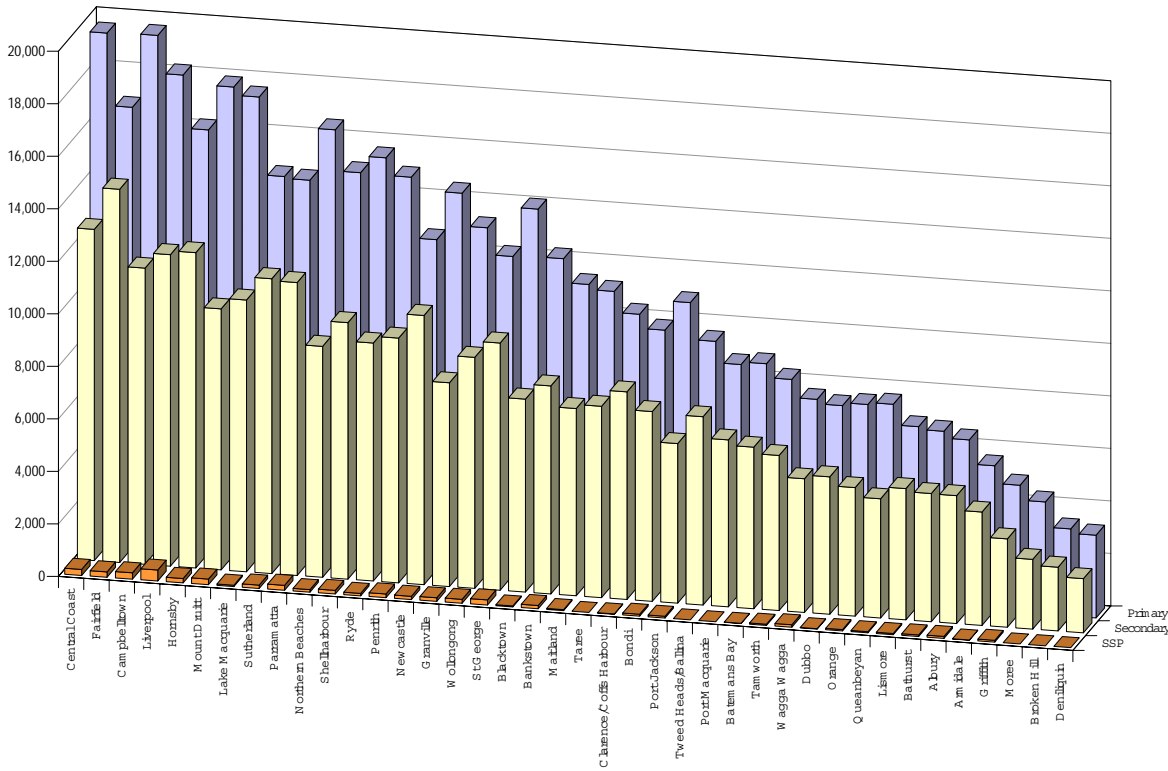


Figure 2. Aboriginal and Torres Strait Islander Student Enrolments by District and Level of Education, Midyear 2000

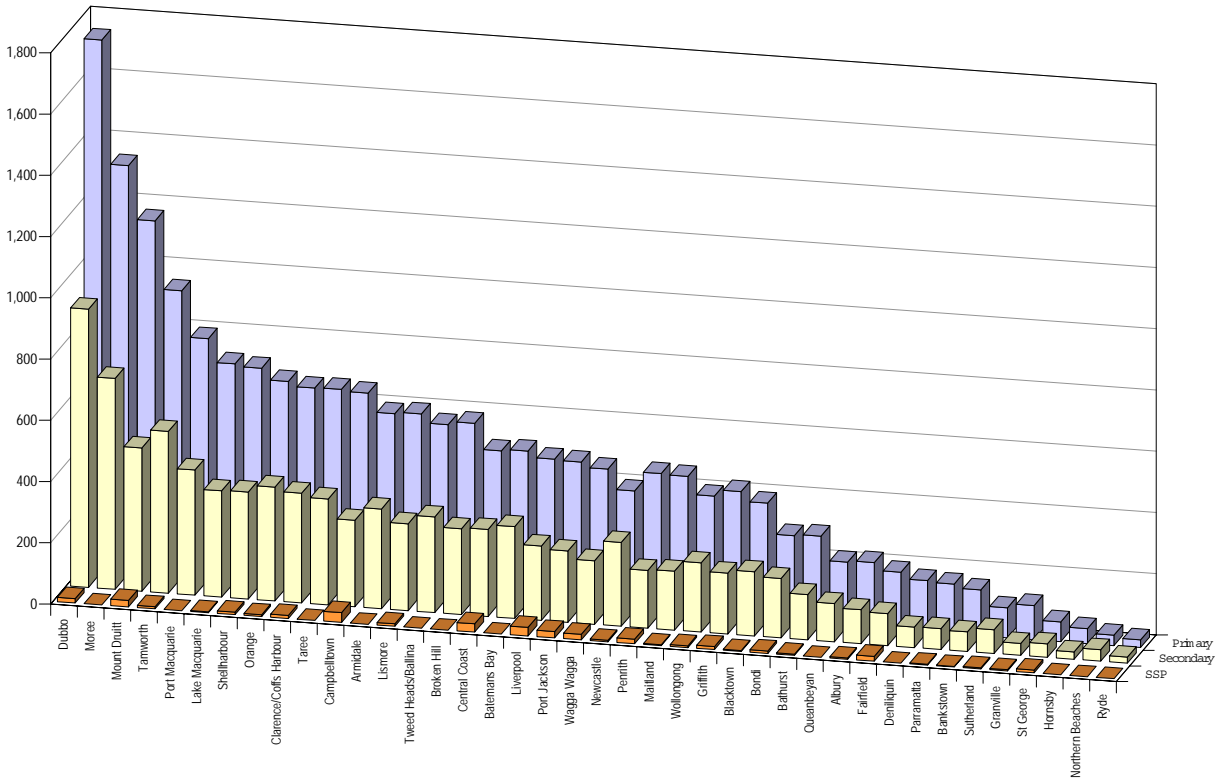


Figure 3. Apparent Retention Rate in NSW Government Schools 2000

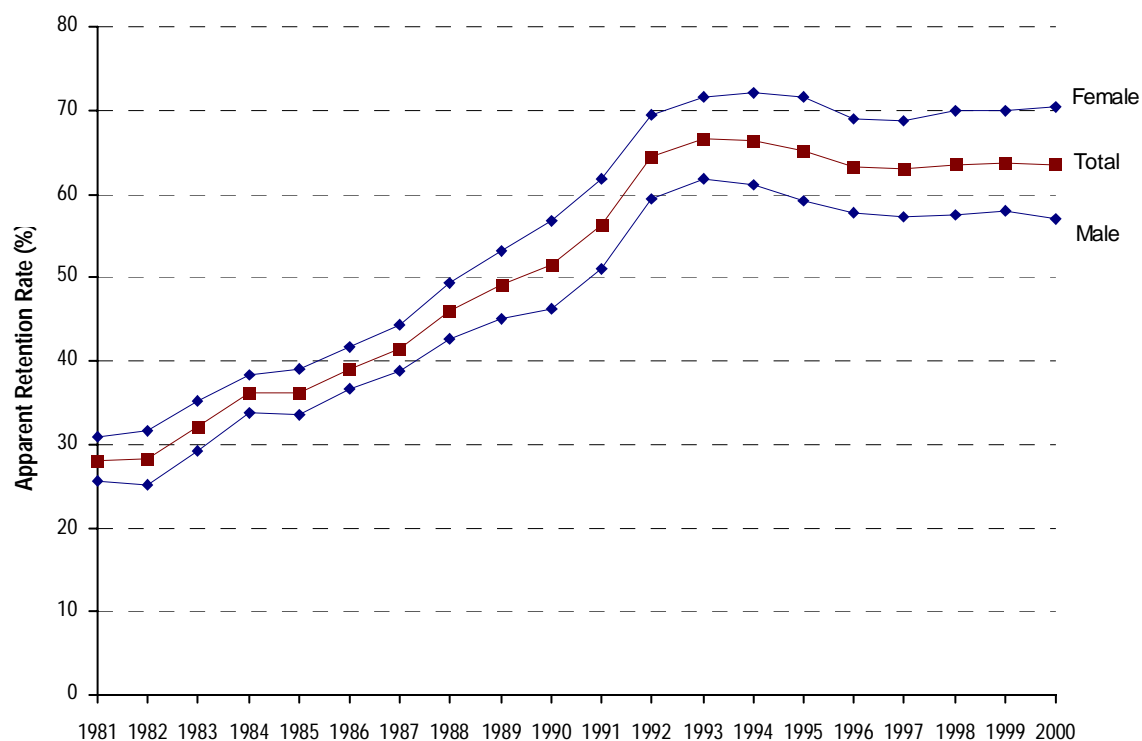


Figure 4. Total School Enrolments (FTE) by Sector, 1952-2000

