

Schools: Language Diversity in NSW, 2014

Centre for Education Statistics and Evaluation

This bulletin summarises the diversity of students with a language background other than English (LBOTE) who are enrolled in NSW government schools in 2014.

In 2014, 68.4 per cent of students who are currently enrolled in NSW government schools come from homes where English is the only language (see Figure 1). The 2014 collection of language background data shows that almost one third (31.6 per cent) of students in NSW government schools come from homes where languages other than English are spoken. The proportion of LBOTE* students rose by 0.7 percentage points from 2013 and 1.4 percentage points from 2012.

* See definition of LBOTE on page 11

Figure 1

Language background of students in NSW government schools in 2014

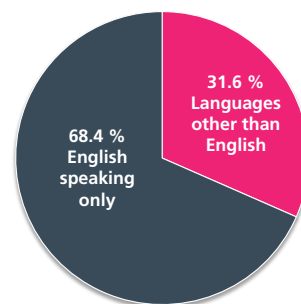
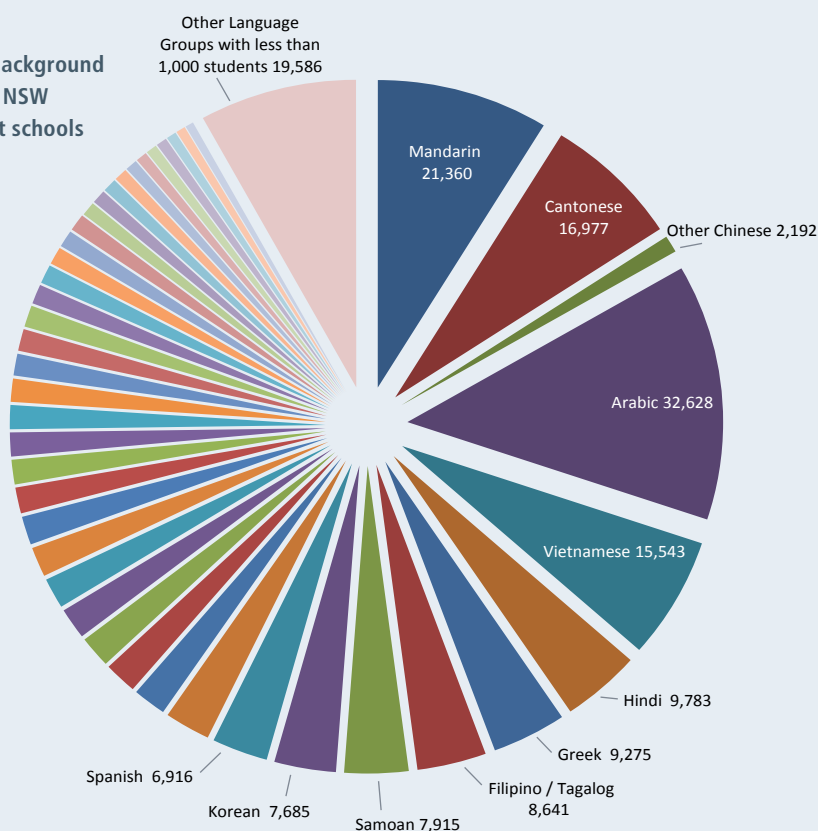


Figure 2

Language background diversity in NSW government schools 2014



Top ten language backgrounds of LBOTE students in NSW government schools

In 2014 the top ten languages represent more than 50 per cent of all LBOTE students.

The largest single language group of LBOTE students in 2014 is Arabic (32,628 students) and the largest combined language group which comprises Mandarin, Cantonese and Other Chinese language backgrounds is Chinese (40,529) (see Figure 2).

What are the language backgrounds of our students?

There are 232 different language backgrounds of LBOTE students at NSW government schools but only 44 languages have more than 1,000 LBOTE students enrolled. 188 languages are included in the 'Other Language Groups'.

After Chinese and Arabic the next largest language background is Vietnamese, followed by Hindi and Greek. Two language backgrounds from the Pacific Islands region, Filipino (Tagalog) and Samoan also feature in the top ten language backgrounds.

In March 2014, there were 242,850 NSW government school students identified as having a language background other than English, which comprises 31.6 per cent of the 769,429 NSW government school students overall.



Table 1A

Enrolments of students of language background other than English by language, 2013 and 2014 (by largest language groups in 2014)

Language ¹	2013		2014	
	Students	% of Total LBOTE	Students	% of Total LBOTE
Chinese:	40,106	17.1	40,529	16.7
<i>Mandarin</i>	20,334	8.6	21,360	8.8
<i>Cantonese</i>	17,609	7.5	16,977	7.0
<i>Other Chinese*</i>	2,163	0.9	2,192	0.9
Arabic	31,072	13.2	32,628	13.4
Vietnamese	15,430	6.6	15,543	6.4
Hindi	9,387	4.0	9,783	4.0
Greek	9,239	3.9	9,275	3.8
Filipino / Tagalog*	8,473	3.6	8,641	3.6
Samoan	7,720	3.3	7,915	3.3
Korean	7,419	3.2	7,685	3.2
Spanish	6,793	2.9	6,916	2.8
Italian	5,864	2.5	5,697	2.3
Tamil	3,849	1.6	4,163	1.7
Tongan	4,008	1.7	4,063	1.7
Macedonian	3,988	1.7	3,993	1.6
Urdu	3,649	1.6	3,968	1.6
Indonesian	3,754	1.6	3,903	1.6
Turkish	3,842	1.6	3,803	1.6
Bengali	3,245	1.4	3,631	1.5
Punjabi	3,023	1.3	3,293	1.4
Serbian	3,185	1.4	3,127	1.3
German	3,095	1.3	3,069	1.3
Japanese	2,880	1.2	3,042	1.3
Assyrian & Chaldean*	2,639	1.1	2,960	1.2
French	2,766	1.2	2,805	1.2
Thai	2,646	1.1	2,775	1.1
Persian (excluding Dari) / Farsi	2,525	1.1	2,731	1.1
Dari	2,274	1.0	2,480	1.0
Khmer	2,353	1.0	2,384	1.0
Russian	2,109	0.9	2,222	0.9
Gujarati	1,852	0.8	2,180	0.9
Maori (New Zealand)	2,140	0.9	2,153	0.9
Portuguese	1,662	0.7	1,774	0.7
Sinhalese	1,725	0.7	1,751	0.7
Nepali	1,440	0.6	1,735	0.7
Croatian	1,628	0.7	1,629	0.7
Fijian	1,439	0.6	1,495	0.6
Malayalam	1,166	0.5	1,389	0.6
Dutch	1,356	0.6	1,364	0.6
Telugu	1,160	0.5	1,340	0.6
Afrikaans	1,189	0.5	1,236	0.5
Maori (Cook Island)	1,160	0.5	1,167	0.5
Lao	1,032	0.4	1,027	0.4
Other Language Groups ¹	18,824	8.0	19,586	8.1
Total LBOTE	235,106	100.0	242,850	100.0

Notes

1. The table is ordered by the largest language groups for language groups with 1000 or more students in 2014. Language groups with fewer than 1,000 students in 2014 are included in 'Other language groups', including 'Maltese' which fell below 1,000 students in 2014.
2. See the definition of LBOTE on page 11 for the reporting rule used to determine the language background for students from households where multiple languages are spoken.
3. See page 11 for other Explanatory Notes *.

Table 1B

Enrolments of students of language background other than English by language and level of schooling,
March 2014 (by largest language groups)

Language	Primary		Secondary		All LBOTE students ¹		
	Students	% of Primary LBOTE	Students	% of Secondary LBOTE	Students	% of Total LBOTE	Cumulative
Chinese	19,967	14.2	20,442	20.2	40,529	16.7	16.7
<i>Mandarin</i>	11,128	7.9	10,187	10.1	21,360	8.8	-
<i>Cantonese</i>	7,683	5.5	9,234	9.1	16,977	7.0	-
<i>Other Chinese*</i>	1,156	0.8	1,021	1.0	2,192	0.9	-
Arabic	19,564	13.9	12,726	12.6	32,628	13.4	30.1
Vietnamese	8,044	5.7	7,371	7.3	15,543	6.4	36.5
Hindi	6,159	4.4	3,574	3.5	9,783	4.0	40.6
Greek	5,966	4.2	3,250	3.2	9,275	3.8	44.4
Filipino/Tagalog*	4,498	3.2	4,076	4.0	8,641	3.6	47.9
Samoan	4,474	3.2	3,394	3.4	7,915	3.3	51.2
Korean	4,353	3.1	3,316	3.3	7,685	3.2	54.4
Spanish	4,295	3.1	2,579	2.6	6,916	2.8	57.2
Italian	3,414	2.4	2,243	2.2	5,697	2.3	59.6
Tamil	2,541	1.8	1,604	1.6	4,163	1.7	61.3
Tongan	2,282	1.6	1,757	1.7	4,063	1.7	62.9
Macedonian	2,358	1.7	1,620	1.6	3,993	1.6	64.6
Urdu	2,532	1.8	1,410	1.4	3,968	1.6	66.2
Indonesian	2,271	1.6	1,612	1.6	3,903	1.6	67.8
Turkish	2,054	1.5	1,717	1.7	3,803	1.6	69.4
Bengali	2,377	1.7	1,211	1.2	3,631	1.5	70.9
Punjabi	2,240	1.6	1,046	1.0	3,293	1.4	72.2
Serbian	1,627	1.2	1,492	1.5	3,127	1.3	73.5
German	1,860	1.3	1,204	1.2	3,069	1.3	74.8
Japanese	1,955	1.4	1,074	1.1	3,042	1.3	76.1
French	1,855	1.3	943	0.9	2,805	1.2	77.2
Assyrian & Chaldean*	1,689	1.2	1,254	1.2	2,960	1.2	78.4
Thai	1,609	1.1	1,155	1.1	2,775	1.1	79.6
Persian (excluding Dari)/Farsi	1,469	1.0	1,249	1.2	2,731	1.1	80.7
Dari	1,317	0.9	1,153	1.1	2,480	1.0	81.7
Khmer	1,351	1.0	1,021	1.0	2,384	1.0	82.7
Russian	1,499	1.1	719	0.7	2,222	0.9	83.6
Gujarati	1,627	1.2	553	0.5	2,180	0.9	84.5
Maori (New Zealand)	1,181	0.8	959	0.9	2,153	0.9	85.4
Portugese	1,145	0.8	618	0.6	1,774	0.7	86.1
Sinhalese	1,021	0.7	722	0.7	1,751	0.7	86.8
Nepali	1,192	0.8	539	0.5	1,735	0.7	87.6
Croatian	926	0.7	691	0.7	1,629	0.7	88.2
Fijian	861	0.6	625	0.6	1,495	0.6	88.8
Malayalam	1,002	0.7	385	0.4	1,389	0.6	89.4
Dutch	896	0.6	466	0.5	1,364	0.6	90.0
Telugu	1,004	0.7	336	0.3	1,340	0.6	90.5
Afrikaans	748	0.5	485	0.5	1,236	0.5	91.0
Maori (Cook Island)	620	0.4	539	0.5	1,167	0.5	91.5
Lao	560	0.4	463	0.5	1,027	0.4	91.9
Other Language Groups*	12,009	8.6	7,461	7.4	19,586	8.1	100.0
Total LBOTE	140,412	100.0	101,054	100.0	242,850	100.0	

Notes:

1. All LBOTE students includes SSP students, which are not included in primary or secondary student numbers.
2. See page 11 for other Explanatory Notes*.

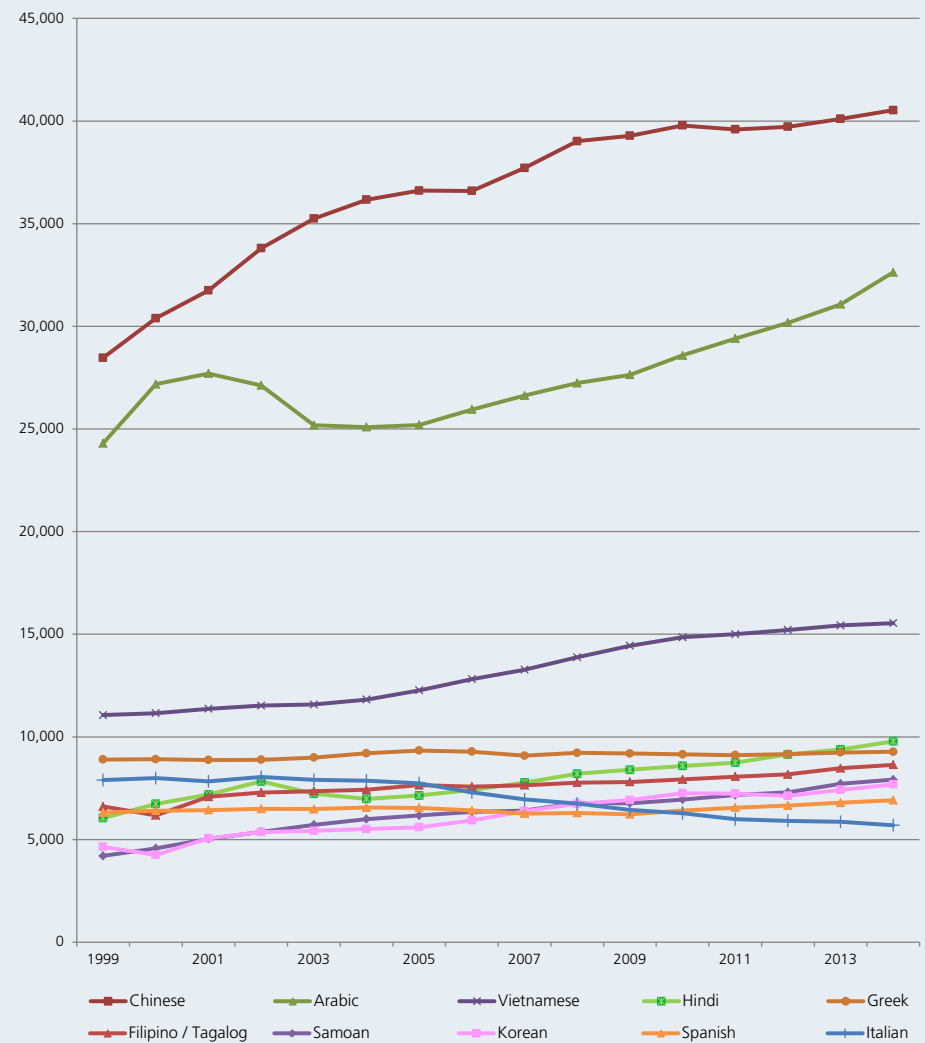
Trends for the largest language groups over the period 1999 to 2014

Since 1999, the top three language backgrounds have grown significantly (see Figure 3), with Chinese growing 42 per cent, while Arabic and Vietnamese have grown 34 per cent and 40 per cent respectively over that period. Samoan has had the greatest growth over the period of 88 per cent.

There has been a decline of 28 per cent in Italian language background students over the period 1999-2014 from 7,896 in 1999 to 5,697 in 2014. Italian has slipped from the fifth largest language background in 1999, to the tenth largest language background in 2014.

Figure 3

Top ten language backgrounds other than English - 1999 - 2014



Students with language background other than English by Statistical Area (SA4) groupings - 2014

Previous publications of the LBOTE bulletin compared enrolments in DEC regions. From 2014 these geographies have been discontinued and replaced with a geographical structure based on the new ABS Australian Statistical Geography Standard (ASGS). A combination of ASGS Statistical Area 4 (SA4) boundaries in New South Wales have been combined into 11 groups for reporting and publication of Department data.



Where are LBOTE students in NSW?

Over 56 per cent of all students enrolled in NSW government schools are in the Sydney metropolitan area. In these schools over 50 per cent of the students have a language background other than English.

Sydney-West has the highest LBOTE student enrolment of 49,114 representing 62.7 per cent of all students enrolled. North West NSW has the lowest LBOTE student enrolment of 2,552 representing 3.8 per cent of all students enrolled.

Figure 4

LBOTE Percentage of enrolments and languages spoken in a Statistical Area (SA4) Grouping - 2014

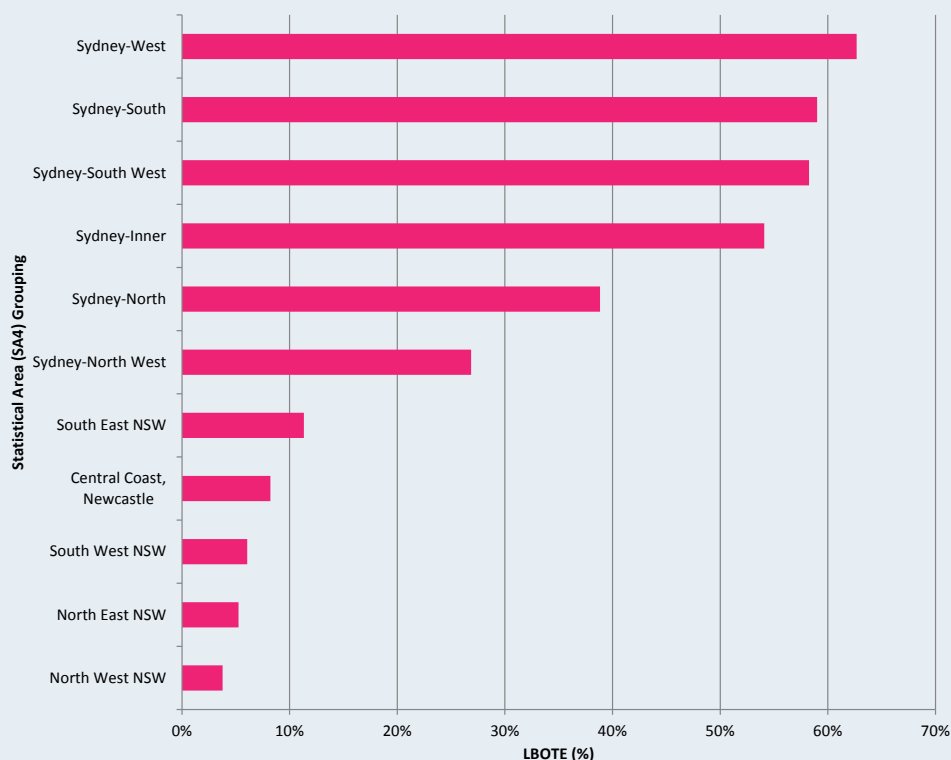


Table 2

LBOTE enrolments by language and Statistical Area 4 Groupings and number of language groups - March 2014

Language	Statistical Area (SA4) groupings											Total State LBOTE	As % of Total LBOTE
	Sydney-North	Sydney-Inner	Sydney-South	Sydney-South West	Sydney-West	Sydney-North West	North East NSW	North West NSW	South West NSW	South East NSW	Central Coast, Newcastle		
Chinese	10,692	7,444	7,767	4,156	6,163	2,922	134	126	149	400	576	40,529	16.7
<i>Cantonese</i>	4,039	2,948	3,747	2,023	2,610	1,063	64	71	63	128	221	16,977	7.0
<i>Mandarin</i>	6,396	4,244	3,841	1,076	3,304	1,776	56	44	70	229	324	21,360	8.8
<i>Chinese Other*</i>	257	252	179	1,057	249	83	14	11	16	43	31	2,192	0.9
Arabic	640	1,556	12,775	7,298	8,425	810	57	116	118	580	253	32,628	13.4
Vietnamese	465	1,709	2,765	8,537	1,409	217	50	57	29	176	129	15,543	6.4
Hindi	1,094	602	725	2,398	3,422	1,087	38	76	67	117	157	9,783	4.0
Greek	620	1,700	4,447	787	490	418	56	44	70	383	260	9,275	3.8
Filipino/Tagalog*	803	658	926	1,116	2,615	946	223	321	226	379	428	8,641	3.6
Samoan	86	150	846	3,664	2,100	479	32	71	200	93	194	7,915	3.3
Korean	2,868	1,701	457	53	1,470	841	19	8	19	62	187	7,685	3.2
Spanish	913	959	820	1,875	657	575	184	72	76	441	344	6,916	2.8
Italian	773	1,236	654	1,075	347	452	90	54	262	422	332	5,697	2.3
Tamil	426	686	134	250	1,965	585	11	25	12	18	51	4,163	1.7
Tongan	255	370	522	987	1,259	199	26	32	142	106	165	4,063	1.7
Macedonian	94	110	1,647	604	89	47	5	3	12	1,099	283	3,993	1.6
Urdu	194	305	870	585	1,332	455	19	32	50	66	60	3,968	1.6
Indonesian	578	867	949	326	469	254	80	39	22	133	186	3,903	1.6
Turkish	147	570	380	486	1,656	257	15	15	38	196	43	3,803	1.6
Bengali	198	616	1,066	701	669	195	6	37	38	37	68	3,631	1.5
Punjabi	222	119	204	265	1,509	449	222	46	169	53	35	3,293	1.4
Serbian	280	208	279	1562	221	138	8	15	18	324	74	3,127	1.3
German	859	467	198	118	88	255	313	95	86	309	281	3,069	1.3
Japanese	1,326	546	329	74	153	122	188	38	23	106	137	3,042	1.3
Assyrian & Chaldean*	15	95	82	2,620	91	35	4	4	0	11	3	2,960	1.2
French	948	498	261	145	202	133	203	56	46	139	174	2,805	1.2
Thai	477	522	367	359	236	122	149	83	66	215	179	2,775	1.1
Persian (Excluding Dari)/Farsi	667	160	117	211	1,027	385	17	11	19	86	31	2,731	1.1
Dari	115	83	108	143	1,753	146	47	6	24	21	34	2,480	1.0
Khmer	35	49	50	2,018	102	52	6	1	12	22	37	2,384	1.0
Russian	432	684	330	135	211	150	37	34	49	57	103	2,222	0.9
Gujarati	177	135	118	71	1383	182	5	15	43	23	28	2,180	0.9
Maori (New Zealand)	76	153	439	356	446	151	88	82	98	139	125	2,153	0.9
Portuguese	341	380	320	201	147	66	53	33	13	156	64	1,774	0.7
Sinhalese	330	90	62	111	438	549	9	29	44	44	45	1,751	0.7
Nepali	188	275	463	84	439	69	4	30	137	25	21	1,735	0.7
Croatian	189	122	237	374	208	194	19	18	19	170	79	1,629	0.7
Fijian	60	144	303	306	331	60	25	29	138	29	70	1,495	0.6
Malayalam	180	149	130	218	418	187	11	10	13	37	36	1,389	0.6
Dutch	448	170	111	26	45	130	103	53	45	121	112	1,364	0.6
Telugu	170	193	50	100	642	125	4	8	9	14	25	1,340	0.6
Afrikaans	286	49	82	97	75	242	39	107	106	51	102	1,236	0.5
Maori (Cook Island)	24	98	266	204	317	36	9	12	88	96	17	1,167	0.5
Lao	28	19	42	818	37	12	10	8	27	13	13	1,027	0.4
Other Language Groups*	2,626	2,162	2,166	2,927	4,058	1,742	752	601	489	1,084	979	19,586	8.1
Total LBOTE	31,345	28,809	44,864	48,441	49,114	16,471	3,370	2,552	3,311	8,053	6,520	242,850	100.0
<i>Number of different language groups</i>	151	168	171	173	179	155	131	129	128	149	148	232	

Notes:

1. The table is ordered by the largest language groups for languages with 1000 or more students in 2014.
2. See page 11 for other Explanatory Notes*.

Location of LBOTE students from different language backgrounds

Nearly 60 per cent of all LBOTE students are located in Sydney-West, Sydney-South or Sydney-South West. However, there are significant pockets of students from various language backgrounds located in other areas as shown in Table 2. For example, students from Chinese, Korean, Japanese, German and French language backgrounds are more likely to be located in Sydney-North, whereas students from Italian and Russian language backgrounds are more likely to be located in Sydney-Inner.

The language backgrounds concentrated in Sydney-West include several from the Indian subcontinent (Hindi, Tamil, Urdu, Punjabi) with between one-third and one-half of all students from these language backgrounds located in this area alone. Sydney-South West contains almost all students from Assyrian & Chaldean (89%) and Khmer (85%) language backgrounds, plus the largest concentrations of students from Vietnamese (55%), Serbian (50%) and Samoan (46%) language backgrounds. Sydney-South contains the largest proportions of students from Greek (48%) and Macedonian (41%) language backgrounds, as well as Arabic language background students (39%).

The only language background with a significant concentration of students outside the Sydney metropolitan area is Macedonian with 28 per cent of students located in South East NSW.

Location of LBOTE students by level of schooling

For schools in Sydney-North and Sydney-Inner the proportion of LBOTE students as a percentage of enrolments is more than 10 percentage points higher for secondary schools than for primary schools (see Table 3A). Contributing factors are likely to include: Full fee paying international students who are predominantly Year 10-12 students enrolling in schools in these two areas; a relatively large number of selective schools (which have very high LBOTE enrolments) in these two areas drawing some of their students from other areas; and the slightly higher rate of retention of LBOTE students to Year 12 relative to English speaking students.

Table 3A

Enrolments of students of language background other than English, by Statistical Area 4 Groupings and level of schooling, March 2014

Statistical Area (SA4) grouping*	Primary			Secondary			SSP			All Students		
	LBOTE Students	All Students	LBOTE as % of enols	LBOTE Students	All Students	LBOTE as % of enols	LBOTE Students	All Students	LBOTE as % of enols	LBOTE Students	All Students	LBOTE as % of enols
Sydney-North	18,060	52,512	34.4	13,169	27,834	47.3	116	339	34.2	31,345	80,685	38.8
Sydney-Inner	14,967	32,648	45.8	13,716	20,385	67.3	126	230	54.8	28,809	53,263	54.1
Sydney-South	26,657	45,427	58.7	17,861	29,978	59.6	346	632	54.7	44,864	76,037	59.0
Sydney-South West	27,080	47,596	56.9	21,124	35,002	60.4	237	564	42.0	48,441	83,162	58.2
Sydney-West	31,127	49,345	63.1	17,614	28,277	62.3	373	735	50.7	49,114	78,357	62.7
Sydney-North West	8,650	35,981	24.0	7,742	25,096	30.8	79	254	31.1	16,471	61,331	26.9
North East NSW	1,956	35,554	5.5	1,411	28,480	5.0	3	96	3.1	3,370	64,130	5.3
North West NSW	1,598	39,659	4.0	949	27,698	3.4	5	154	3.2	2,552	67,511	3.8
South West NSW	2,038	31,277	6.5	1,254	22,843	5.5	19	431	4.4	3,311	54,551	6.1
South East NSW	4,629	41,500	11.2	3,392	29,302	11.6	32	333	9.6	8,053	71,135	11.3
Central Coast, Newcastle	3,650	44,193	8.3	2,822	34,545	8.2	48	529	9.1	6,520	79,267	8.2
Total	140,412	455,692	30.8	101,054	309,440	32.7	1384	4297	32.2	242,850	769,429	31.6

Notes:

1. LBOTE enrolments for 2014 are compared to enrolments (headcount) in March 2014.
2. For further information see the Explanatory Notes on page 11*.

LBOTE students Kindergarten to Year 12 - 2014

As a percentage of enrolments in any particular academic year, the percentage of LBOTE students in NSW government schools is steady from Kindergarten to Year 10 at approximately 30 per cent. This percentage is higher for the senior years with 33.9 per cent for Year 11 and 37.4 per cent for Year 12 students (see Table 3B). This is indicative of higher rates of retention to Year 12 of LBOTE students compared to English speaking students, as well as the increased number of full fee paying international students in these years.

There is a higher proportion of LBOTE students enrolled in NSW government secondary schools than in primary schools. LBOTE student enrolments represented 30.8 per cent of all primary enrolments and 32.7 per cent of all secondary enrolments in government schools.

Table 3B

Enrolments of students of language background other than English, by Statistical Area (SA4) grouping and scholastic year, March 2014

Statistical Area (SA4) grouping	Primary									SSP Total SSP
	Kinder	Year 1	Year 2	Year 3	Year 4	Year 5	Year 6	Support	Total Primary	
Sydney-North	2,862	3,033	2,636	2,499	2,395	2,279	2,279	77	18,060	116
Sydney-Inner	2,377	2,409	2,195	2,097	2,053	1,854	1,874	108	14,967	126
Sydney-South	3,995	4,014	3,853	3,695	3,608	3,646	3,564	282	26,657	346
Sydney-South West	3,836	3,828	3,963	3,676	3,658	3,787	3,847	485	27,080	237
Sydney-West	5,009	4,951	4,662	4,279	4,093	3,920	3,814	399	31,127	373
Sydney-North West	1,233	1,293	1,246	1,241	1,158	1,205	1,194	80	8,650	79
North East NSW	293	294	310	273	259	268	241	18	1,956	3
North West NSW	239	255	243	227	226	199	199	10	1,598	5
South West NSW	336	306	318	280	254	277	253	14	2,038	19
South East NSW	671	654	672	679	635	636	615	67	4,629	32
Central Coast, Newcastle	557	557	546	532	489	482	449	38	3,650	48
State Total LBOTE Enrolments	21,408	21,594	20,644	19,478	18,828	18,553	18,329	1,578	140,412	1,384
As % Enrolments	31.2	31.1	30.5	30.3	30.7	31.0	31.2	26.4	30.8	32.2

Statistical Area (SA4) grouping	Secondary								Primary and Secondary		
	Year 7	Year 8	Year 9	Year 10	Year 11	Year 12	Support	Total Secondary	Total SA4 LBOTE Enrolments	Total SA4 All Enrolments	As % Statistical Area
Sydney-North	1,944	1,985	2,044	2,087	2,427	2,280	402	13,169	31,345	80,685	38.8
Sydney-Inner	1,917	2,068	2,204	2,178	2,525	2,315	509	13,716	28,809	53,263	54.1
Sydney-South	2,632	2,831	2,825	2,944	3,073	2,826	730	17,861	44,864	76,037	59.0
Sydney-South West	3,134	3,326	3,367	3,388	3,610	3,258	1,041	21,124	48,441	83,162	58.2
Sydney-West	2,603	2,750	2,763	2,931	3,005	2,639	923	17,614	49,114	78,357	62.7
Sydney-North West	1,094	1,167	1,226	1,219	1,508	1,397	131	7,742	16,471	61,331	26.9
North East NSW	237	233	244	241	243	190	23	1,411	3,370	64,130	5.3
North West NSW	174	182	144	163	162	106	18	949	2,552	67,511	3.8
South West NSW	207	206	214	231	224	156	16	1,254	3,311	54,551	6.1
South East NSW	519	527	518	583	601	488	156	3,392	8,053	71,135	11.3
Central Coast, Newcastle	460	485	499	490	451	390	47	2,822	6,520	79,267	8.2
State Total LBOTE Enrolments	14,921	15,760	6,048	6,455	17,829	16,045	3,996	101,054	242,850	769,429	
As % Enrolments	30.3	31.2	31.2	31.1	33.9	37.4	41.2	32.7	31.6		

Notes:

1. LBOTE enrolments for 2014 are compared to enrolments (headcount) in March 2014.
2. For further information see the notes on page 11.

What languages do newly arrived students speak?

Languages spoken by 'new arrival' students are counted on a different basis than LBOTE. The students in this table are counted based on the main languages spoken by the students themselves, while the LBOTE count includes students who speak another language and those with a parent/carer who speaks another language. The total number of new arrival students in 2013 was 7,274.

Table 4
Main languages spoken by new arrival students 2009 to 2013

2009		2010		2011		2012		2013	
Language	Students	Language	Students	Language	Students	Language	Students	Language	Students
Mandarin	1,227	Mandarin	840	Mandarin	940	Mandarin	981	Arabic	1,054
Arabic	793	Arabic	643	Arabic	746	Arabic	574	Mandarin	810
Korean	625	Korean	478	Korean	352	Korean	371	Samoan	313
Cantonese	403	Filipino/Tagalog	317	Filipino/Tagalog	334	Filipino/Tagalog	362	Korean	312
Vietnamese	357	Cantonese	293	Cantonese	296	Vietnamese	349	Filipino/Tagalog	307
Filipino/Tagalog	332	Vietnamese	227	Vietnamese	251	Samoan	305	Persian (excluding Dari)/Farsi	282
Hindi	213	Hindi	203	Samoan	235	Cantonese	279	Hindi	234
Assyrian	197	Samoan	177	Hindi	208	Hindi	220	Cantonese	225
Thai	179	Dari	168	Tamil	159	Urdu	192	Vietnamese	218
Nepalese	149	Indonesian	152	Persian (excluding Dari)/Farsi	151	Persian (excluding Dari)/Farsi	165	Urdu	186
Spanish	148	Nepalese	151	Spanish	142	Nepalese	149	Dari	183
German	143	Urdu	147	Nepalese	140	Spanish	149	Tamil	171
Indonesian	133	Spanish	142	Indonesian	140	Thai	133	Nepalese	171
Punjabi	132	Thai	133	Urdu	132	Japanese	119	Chaldean Neo-Aramaic	165
Dari	116	Tamil	122	Thai	116	Indonesian	118	Spanish	123
Gujarati	112	Assyrian	109	Japanese	115	Tamil	97	Assyrian Neo-Aramaic	123
Samoan	112	Japanese	106	Dari	105	Greek	92	Hazaraghi	121
Tamil	110	Bengali	98	Bengali	93	Bengali	91	Malayalam	117
Others	2,072	Others	1,999	Others	1,919	Others	1,971	Others	2,159
Total	7,553	Total	6,505	Total	6,574	Total	6,717	Total	7,274

Notes:

1. The New Arrivals Program (NAP) survey is conducted twice per year (March and October) and includes only new enrolments in the 6 months prior to the NAP survey. Before 2012, the NAP survey was conducted three times per year (also included June). 2014 NAP data is not available at the time this bulletin was prepared, since the October survey has not been completed.
2. New arrival students include only those who have enrolled in school in the 6 months prior to the NAP survey, speak a language other than English as their first language, are enrolling in an Australian school for the first time, are in need of initial ESL instruction, and have been in Australia less than 6 months (or for Kindergarten students less than 18 months).
3. The student count in this table is based on main languages spoken by the students themselves. This differs from LBOTE student counts which include languages spoken by the student and/or their parents or carers.
4. With the move in official reporting from Multicultural Education Unit to Statistics Unit in 2013, counting rules slightly differ from previously published data which contributes partly to the variation in statistics from 2012 to 2013.

Sources: Multicultural Education Unit, NSW Department of Education and Communities, ESL/New Arrivals Program Surveys 2007 to 2012
Statistics Unit, Centre for Education Statistics and Evaluation (CESE). Strategic Information and Reporting Directorate. Office of Education.
New Arrivals Program Surveys 2013

What language backgrounds do preschool students come from?

Government preschools enrolled 1,881 students of language background other than English in 2014, representing 45.3 per cent (see Figure 5) of all government preschool enrolments.

Preschool LBOTE enrolments are reported in Table 5 by largest language groups. LBOTE enrolments less than 10 (approximately 0.5%) are included in Other Language Groups.

Figure 5
Percentage of LBOTE enrolments in NSW government preschools

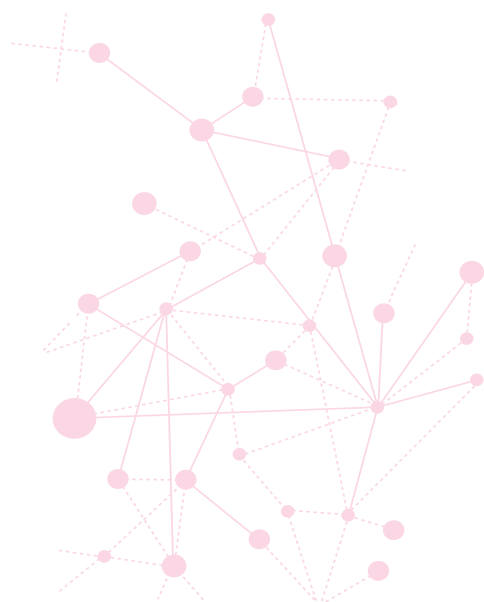
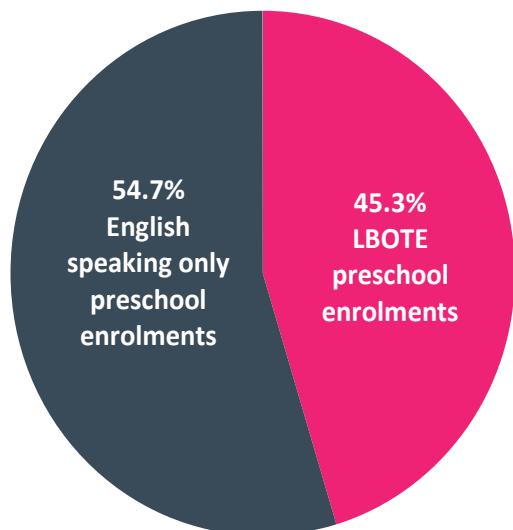


Table 5

Enrolments of government preschool¹ students of language background other than English – largest language groups – March 2014

Language	Students ²	As a % of all preschool LBOTE ³
Arabic	279	14.8
Vietnamese	278	14.8
Chinese	147	7.8
<i>Cantonese</i>	64	3.4
<i>Mandarin</i>	57	3.0
<i>Other Chinese</i>	26	1.4
Samoan	103	5.5
Hindi	76	4.0
Urdu	74	3.9
Filipino / Tagalog	70	3.7
Khmer	65	3.5
Bengali	53	2.8
Punjabi	49	2.6
Gujarati	43	2.3
Tamil	42	2.2
Tongan	42	2.2
Indonesian	38	2.0
Korean	35	1.9
Spanish	31	1.6
Greek	29	1.5
Japanese	26	1.4
Macedonian	26	1.4
Aboriginal English	22	1.2
Thai	21	1.1
Italian	19	1.0
Assyrian & Chaldean	19	1.0
Turkish	16	0.9
Telugu	15	0.8
Malayalam	13	0.7
Persian (Excluding Dari)	12	0.6
Serbian	12	0.6
Lao	11	0.6
Sinhalese	11	0.6
Croatian	10	0.5
Dari	10	0.5
Other Language Groups ⁴	184	9.8
Total LBOTE	1,881	100
LBOTE as a % of preschool enrolment³	45.3%	

Notes:

1. Preschools include the 99 preschools attached to government primary/infant schools and the John Brothie Nursery School. Not included are the government funded community preschools and long day centres that provide a preschool program, which provide the majority of preschool education in NSW.
2. Students include children enrolled in a preschool or an Early Intervention program that is run by a NSW government school. These government preschool classes provide full-time or part-time schooling at pre-primary level.
3. LBOTE as a percentage of preschool enrolment uses March 2014 enrolment data.
4. Other language groups includes 60 language groups.

Definitions

1. LBOTE

Language background other than English: students from language backgrounds other than English are those in whose home a language other than English is spoken by the student, parents, or other primary caregivers.

For students where multiple languages are spoken at home, priority is given first to the primary language spoken by the student and then to that spoken by those caregivers recorded on enrolment forms and in ERN as parent 1 and parent 2 in that order.

2. New arrivals

New arrival students include only those who have enrolled in school in the 6 months prior to the survey.

New arrival students:

- speak a language other than English as their first language
- are enrolling in an Australian school for the first time
- are in need of initial ESL instruction
- have been in Australia less than 6 months (or for Kindergarten students less than 18 months).

The student count of new arrivals is based on main languages spoken by the students themselves. This differs from LBOTE student count which includes languages spoken by the student and/or their parents or carers.

Explanatory Notes

The census of students from language backgrounds other than English (LBOTE) was taken on 7 March 2014 in all NSW government schools, including preschools, intensive English centres and distance education centres.

Since 1996, information on LBOTE students has been collected in the first half of the school year. Until 2012 comparative enrolment information for all students was extracted from the School Entitlement System (February enrolment data). From 2013, comparative enrolment information for all students was extracted from the Enrolment Registration Number (ERN) system during March, at the time the LBOTE data was collected.

1. New arrivals data

Table 4 (main languages spoken by newly arriving students (2009 to 2013)) is a table sourced from the Statistics Unit analysis of data collected in two New Arrivals data collections undertaken each year. The table notes that the student count is based on languages spoken by the students themselves and is therefore different from other LBOTE student counts in the bulletin.

2. Australian Standard Classification of Languages (ASCL)

Several of the smaller language groupings have changed with the release of a revised Australian Standard Classification of Languages (1267.0) by the Australian Bureau of Statistics in August 2011. For information on languages, refer to Australian Standard Classification of Languages, Australian Bureau of Statistics (ASCL catalogue 1267.0).

3. Language groups reported

Tables are reported using the 'largest language groups'. The 'standard reporting groups' tables, which had been used up until 2010, have become out of date.

4. Combined language groups

The 'Other Chinese' language group includes Chinese nec (ASCL 7199), Hakka (ASCL 1027), Min Nan (ASCL 7107) and Wu (ASCL 7106).

Filipino (ASCL 6512) and Tagalog (ASCL 6511) have been combined into one language group.

The 'Assyrian & Chaldean' language group includes Assyrian Neo-Aramaic (ASCL 4206), Chaldean Neo-Aramaic (ASCL 4207) and Assyrian (ASCL 4203).

Other Language Groups are those languages with fewer than 1,000 students in 2014.

5. Statistical Area 4 Groupings

Previous publications of the LBOTE bulletin compared enrolments in DEC regions. From 2014 these geographies have been discontinued and replaced with a geographical structure based on the new ABS Australian Statistical Geography Standard (ASGS). A combination of ASGS Statistical Area 4 (SA4) boundaries in New South Wales have been combined into 11 groups for reporting and publication of Department data.

Name of SA4 Groupings	SA4 Name
Sydney-North	Sydney - North Sydney and Hornsby, Sydney - Northern Beaches, Sydney - Ryde
Sydney- Inner	Sydney - City and Inner South, Sydney - Eastern Suburbs, Sydney - Inner West
Sydney-South	Sydney-Inner South West, Sydney - Sutherland
Sydney-South West	Sydney - Outer South West, Sydney - South West
Sydney-West	Sydney - Blacktown, Sydney - Parramatta
Sydney-North West	Sydney - Baulkham Hills and Hawkesbury, Sydney - Outer West and Blue Mountains
North East NSW	Coffs Harbour - Grafton, Mid North Coast, Richmond - Tweed
North West NSW	Hunter Valley exc Newcastle, Far West and Orana, New England and North West
South West NSW	Central West, Murray, Riverina
South East NSW	Capital Region, Illawarra, Southern Highlands and Shoalhaven
Central Coast, Newcastle	Central Coast, Newcastle and Lake Macquarie

Contact Details

For more information about the Centre for Education Statistics and Evaluation, please contact us:

@ cese@det.nsw.edu.au

📍 cese.nsw.gov.au

Centre for Education Statistics and Evaluation
Office of Education
GPO Box 33
Sydney NSW 2001
Australia
T 02 9561 8000
E cese@det.nsw.edu.au
www.cese.nsw.gov.au

© January 2015
NSW Department of Education and Communities



Education &
Communities

Office of Education

